

YWHAE RABBIT PAB

货号: S216233

产品全名: YWHAE 兔多抗

基因符号 MDS; HEL2; MDCR; KCIP-1; 14-3-3E

UNIPROT ID: P62258 (Gene Accession - BC000179)

背景: This gene product belongs to the 14-3-3 family of proteins which mediate signal transduction by binding to phosphoserine-containing proteins. This highly conserved protein family is found in both plants and mammals, and this protein is 100% identical to the mouse ortholog. It interacts with CDC25 phosphatases, RAF1 and IRS1 proteins, suggesting its role in diverse biochemical activities related to signal transduction, such as cell division and regulation of insulin sensitivity. It has also been implicated in the pathogenesis of small cell lung cancer. Two transcript variants, one protein-coding and the other non-protein-coding, have been found for this gene.

抗原: Fusion protein of human YWHAE

经过测试的应用: ELISA, WB, IHC

推荐稀释比: IHC: 50-200; WB: 1000-5000; ELISA: 5000-10000

种属反应性: Rabbit

克隆性: Rabbit Polyclonal

亚型: Immunogen-specific rabbit IgG

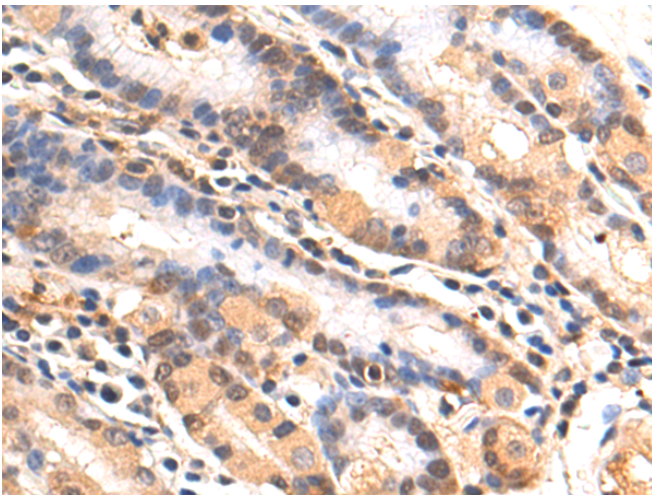
纯化: Antigen affinity purification

种属反应性: Human, Mouse, Rat

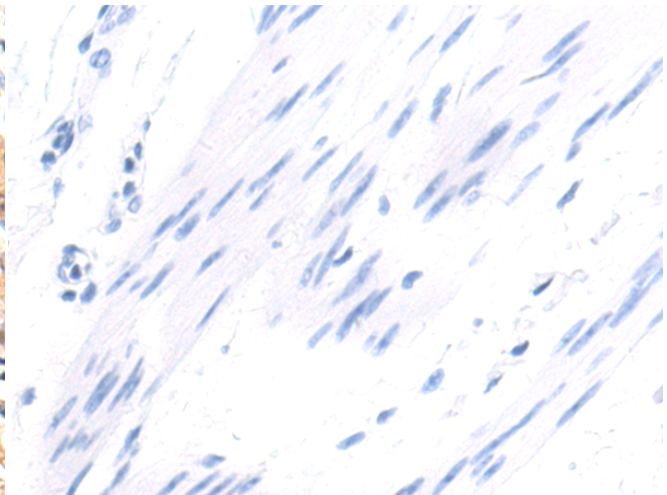
成分: PBS (without Mg²⁺ and Ca²⁺), pH 7.4, 150 mM NaCl, 0.05% Sodium Azide and 40% glycerol

研究领域: Signal Transduction, Neuroscience

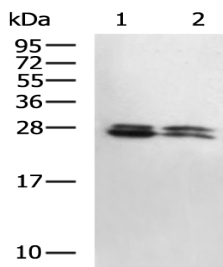
储存和运输: Store at -20°C. Avoid repeated freezing and thawing



Immunohistochemistry analysis of paraffin embedded Human gastric cancer tissue using 216233(YWHAE Antibody) at a dilution of 1/80(Cytoplasm and Nucleus).



In comparison with the IHC on the left, the same paraffin-embedded Human gastric cancer tissue is first treated with the fusion protein and then with 216233(Anti-YWHAE Antibody) at dilution 1/80.



Gel: 12%SDS-PAGE, Lysate: 40 µg;
Lane 1-2: Mouse brain tissue, Mouse fetal brain tissue lysates;
Primary antibody: 216233(YWHAE Antibody) at dilution 1/1000;
Secondary antibody: HRP-conjugated Goat anti rabbit IgG at 1/5000 dilution;
Exposure time: 15 seconds