

YWHAB RABBIT PAB

货号: S219608

产品全名: YWHAB 兔多抗

基因符号: HSI, GW128, YWHAA, KCIP-1

UNIPROT ID: P31946 (Gene Accession - NP_003395)

背景: This gene encodes a protein belonging to the 14-3-3 family of proteins, members of which mediate signal transduction by binding to phosphoserine-containing proteins. This highly conserved protein family is found in both plants and mammals. The encoded protein has been shown to interact with RAF1 and CDC25 phosphatases, suggesting that it may play a role in linking mitogenic signaling and the cell cycle machinery. Two transcript variants, which encode the same protein, have been identified for this gene.

抗原: Synthetic peptide of human YWHAB

经过测试的应用: ELISA, WB, IHC

推荐稀释比: IHC: 25-100;WB: 1000-5000;ELISA: 2000-10000

种属反应性: Rabbit

克隆性: Rabbit Polyclonal

亚型: Immunogen-specific rabbit IgG

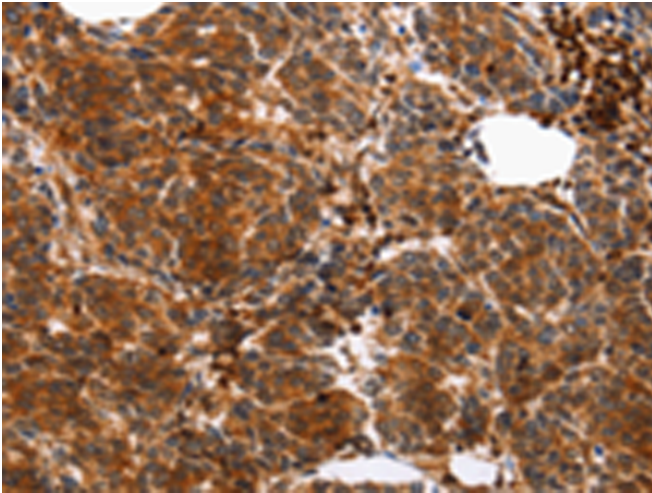
纯化: Antigen affinity purification

种属反应性: Human, Mouse, Rat

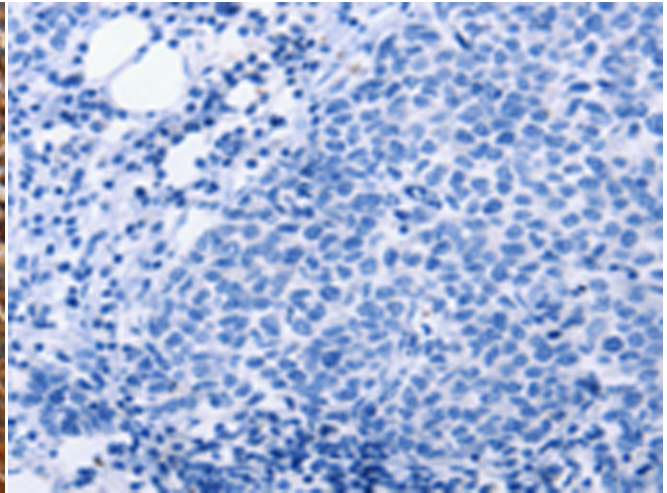
成分: PBS (without Mg²⁺ and Ca²⁺), pH 7.4, 150 mM NaCl, 0.05% Sodium Azide and 40% glycerol

研究领域: Signal Transduction, Neuroscience

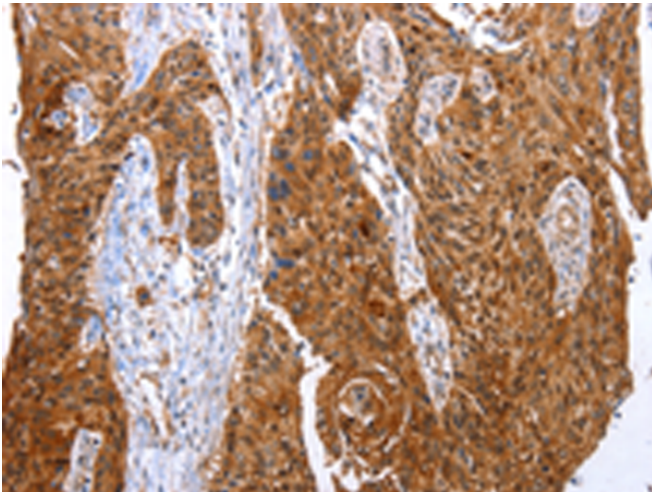
储存和运输: Store at -20°C. Avoid repeated freezing and thawing



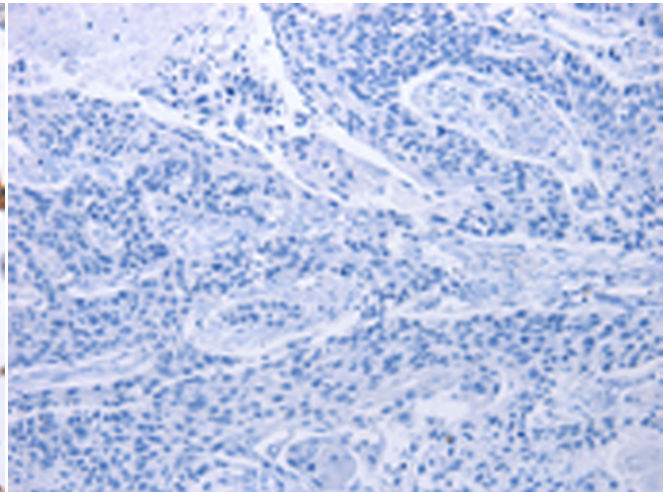
Immunohistochemistry analysis of paraffin embedded Human breast cancer tissue using 219608(YWHAB Antibody) at a dilution of 1/10(Cytoplasm).



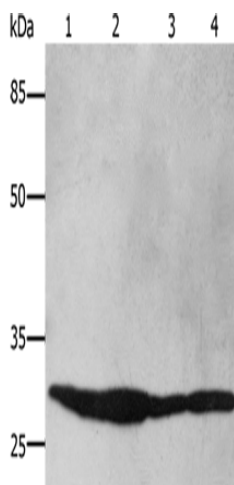
In comparison with the IHC on the left, the same paraffin-embedded Human breast cancer tissue is first treated with the synthetic peptide and then with 219608(Anti-YWHAB Antibody) at dilution 1/10.



The image on the left is immunohistochemistry of paraffin-embedded Human esophagus cancer tissue using 219608(Anti-YWHAB Antibody) at a dilution of 1/10.



In comparison with the IHC on the left, the same paraffin-embedded Human esophagus cancer tissue is first treated with synthetic peptide and then with D260011(Anti-YWHAB Antibody) at dilution 1/10.



Gel: 10%SDS-PAGE, Lysate: 40 µg;
Lane 1-4: HT29 cells, 293T cells, Hela cells, Mouse brain tissue;
Primary antibody: 219608(YWHAB Antibody) at dilution 1/250;
Secondary antibody: Goat anti rabbit IgG at 1/8000 dilution;
Exposure time: 1 second



Product Description

Pioneering GTPase and Oncogene Product Development since 2010
