

YTHDF3 RABBIT PAB

货号: S219603

产品全名: YTHDF3 兔多抗

基因符号: DF3

UNIPROT ID: Q7Z739 (Gene Accession - BC052970)

背景: This gene encodes a member of the YTH (YT521-B homology) domain protein family. The YTH domain is common in eukaryotes, is often found in the middle of the protein sequence, and may function in binding to RNA. Alternative splicing results in multiple transcript variants.

抗原: Fusion protein of human YTHDF3

经过测试的应用: ELISA, IHC

推荐稀释比: IHC: 50-200; ELISA: 5000-10000

种属反应性: Rabbit

克隆性: Rabbit Polyclonal

亚型: Immunogen-specific rabbit IgG

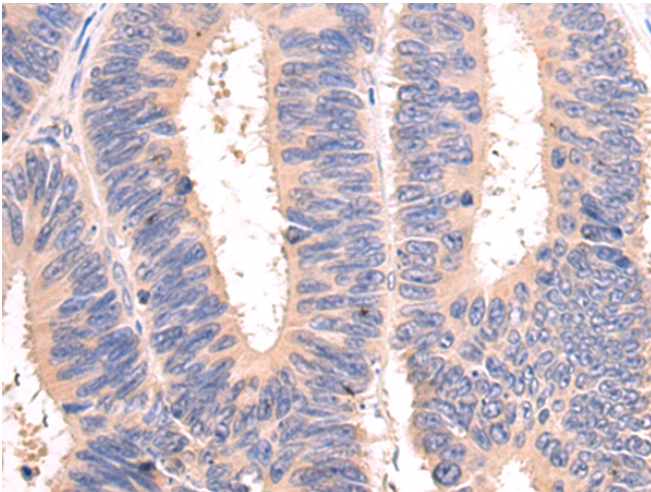
纯化: Antigen affinity purification

种属反应性: Human, Mouse

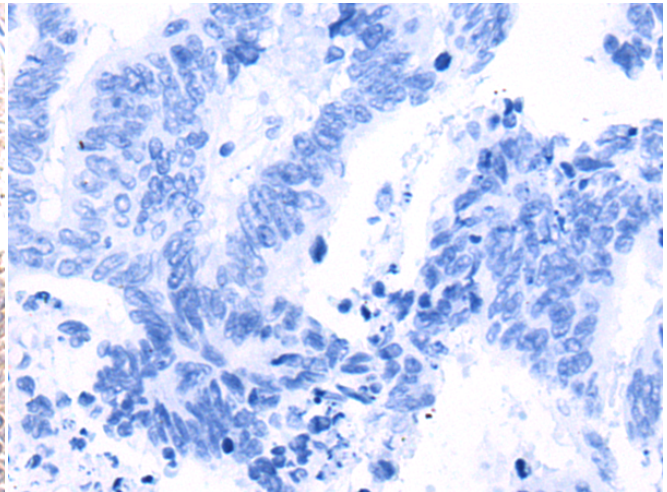
成分: PBS (without Mg²⁺ and Ca²⁺), pH 7.4, 150 mM NaCl, 0.05% Sodium Azide and 40% glycerol

研究领域: Cell Biology

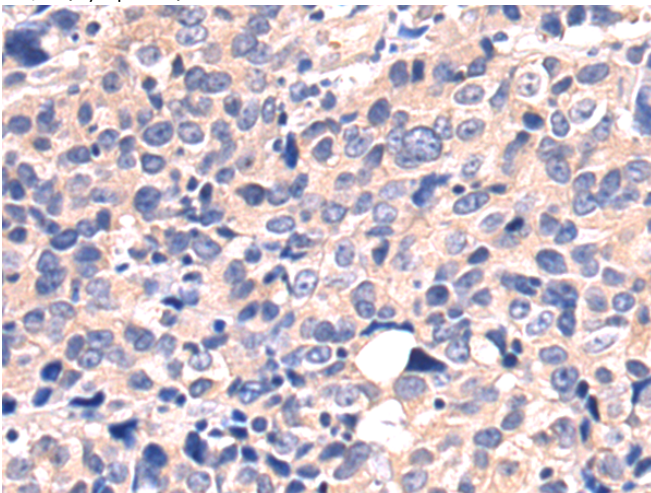
储存和运输: Store at -20°C. Avoid repeated freezing and thawing



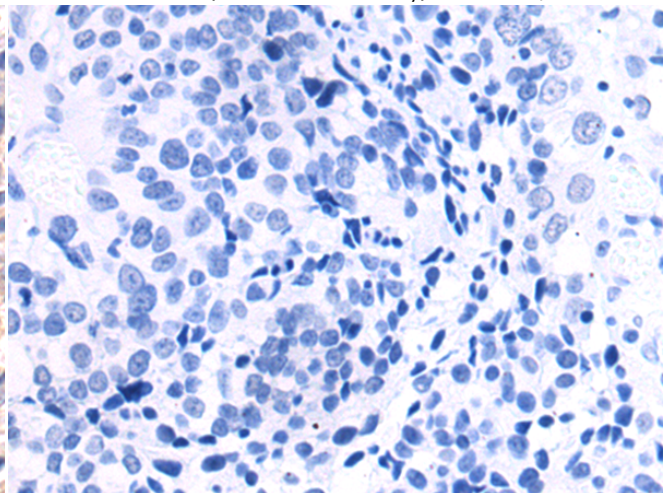
Immunohistochemistry analysis of paraffin embedded Human colorectal cancer tissue using 219603(YTHDF3 Antibody) at a dilution of 1/55(Cytoplasm).



In comparison with the IHC on the left, the same paraffin-embedded Human colorectal cancer tissue is first treated with the fusion protein and then with 219603(Anti-YTHDF3 Antibody) at dilution 1/55.



The image on the left is immunohistochemistry of paraffin-embedded Human bladder cancer tissue using 219603(Anti-YTHDF3 Antibody) at a dilution of 1/55.



In comparison with the IHC on the left, the same paraffin-embedded Human bladder cancer tissue is first treated with fusion protein and then with D227896(Anti-YTHDF3 Antibody) at dilution 1/55.



Product Description

Pioneering GTPase and Oncogene Product Development since 2010
