

YTHDF1 RABBIT MAB

货号: N263612

产品全名: YTHDF1 兔单克隆抗体

基因符号 C20orf21; DF1

UNIPROT ID: P59326

背景: Specifically recognizes and binds N6-methyladenosine (m6A)-containing mRNAs, and regulates their stability.

抗原: Recombinant protein of mouse YTHDF1

经过测试的应用: WB,IP

推荐稀释比: WB: 1/500-1/1000 IP: 1/20

种属反应性: Rabbit

克隆性: Rabbit Monoclonal

克隆编号: R05-2E7

分子量: Calculated MW: 61 kDa; Observed MW: 61 kDa

亚型: IgG

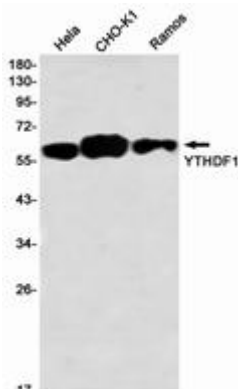
纯化: Affinity Purified

种属反应性: Human,Hamster

成分: PBS (without Mg²⁺ and Ca²⁺), pH 7.3 containing 50% glycerol, 0.5% BSA and 0.02% sodium azide

研究领域: Epigenetics and Nuclear Signaling

储存和运输: Store at -20°C. Avoid repeated freezing and thawing



Western blot analysis of YTHDF1 in HeLa, CHO-K1, Ramos lysates using YTHDF1 antibody.