

YPEL3 RABBIT PAB

货号: S218271

产品全名: YPEL3 兔多抗

基因符号

UNIPROT ID: P61236 (Gene Accession - BC005009)

背景: YPEL3 (yippee-like 3) belongs to a family of five yippee-like proteins, all of which localize to the centrosome or mitotic spindle and are widely expressed in both adult and fetal tissue. This localization plus the fact that the family of human YPEL proteins share a high degree of sequence homology across species suggests that these proteins may have a conserved function involved in cell division. YPEL3 is a p53-regulated gene whose expression is induced by DNA damage and in turn induces cellular senescence. It appears to function as a tumor suppressor as it is downregulated in colon and breast tumors. Involved in proliferation and apoptosis in myeloid precursor cells.

抗原: Full length fusion 蛋白

经过测试的应用: ELISA, IHC

推荐稀释比: IHC: 20-100; ELISA: 5000-10000

种属反应性: Rabbit

克隆性: Rabbit Polyclonal

亚型: Immunogen-specific rabbit IgG

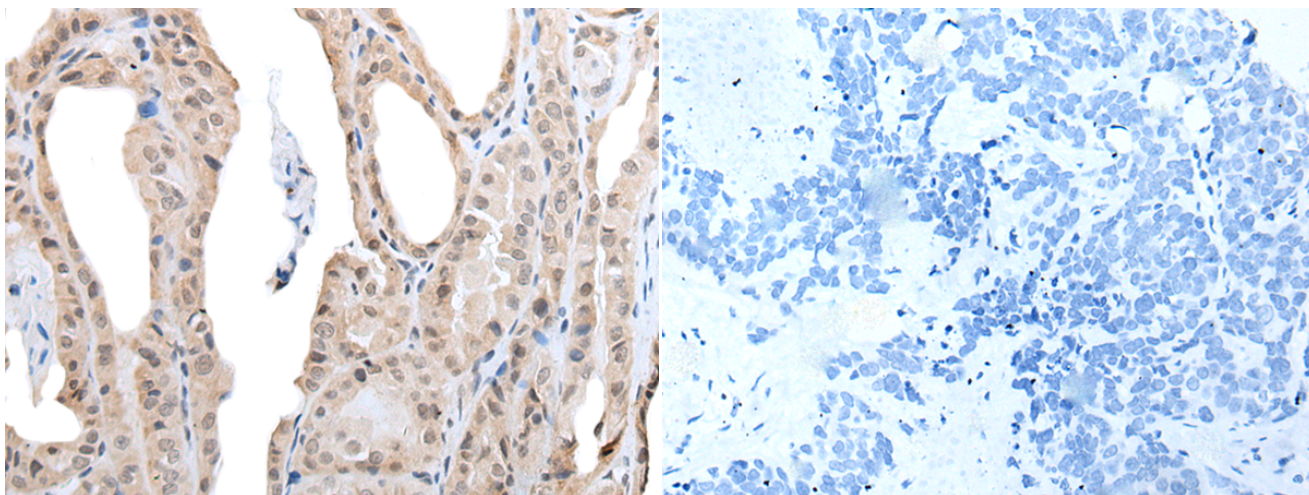
纯化: Antigen affinity purification

种属反应性: Human, Mouse

成分: PBS (without Mg²⁺ and Ca²⁺), pH 7.4, 150 mM NaCl, 0.05% Sodium Azide and 40% glycerol

研究领域: Epigenetics and Nuclear Signaling

储存和运输: Store at -20°C. Avoid repeated freezing and thawing



Immunohistochemistry analysis of paraffin embedded Human thyroid cancer tissue using 218271(YPEL3 Antibody) at a dilution of 1/30(Nucleus).

In comparison with the IHC on the left, the same paraffin-embedded Human thyroid cancer tissue is first treated with the fusion protein and then with 218271(Anti-YPEL3 Antibody) at dilution 1/30.