

XRCC6 RABBIT PAB

货号: S216608

产品全名: XRCC6 兔多抗

基因符号 ML8, KU70, TLAA, CTC75, CTCBF, G22P1

UNIPROT ID: P12956 (Gene Accession - BC008343)

背景: The p70/p80 autoantigen is a nuclear complex consisting of two subunits with molecular masses of approximately 70 and 80 kDa. The complex functions as a single-stranded DNA-dependent ATP-dependent helicase. The complex may be involved in the repair of nonhomologous DNA ends such as that required for double-strand break repair, transposition, and V(D)J recombination. High levels of autoantibodies to p70 and p80 have been found in some patients with systemic lupus erythematosus.

抗原: Fusion protein of human XRCC6

经过测试的应用: ELISA, IHC

推荐稀释比: IHC: Oct-50; ELISA: 1000-5000

种属反应性: Rabbit

克隆性: Rabbit Polyclonal

亚型: Immunogen-specific rabbit IgG

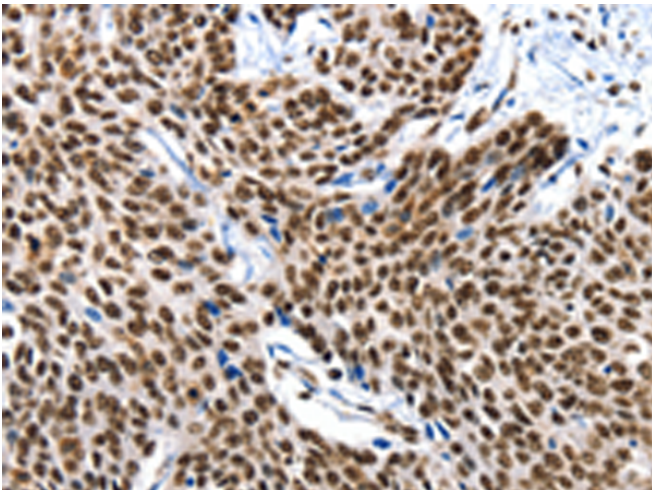
纯化: Antigen affinity purification

种属反应性: Human, Mouse

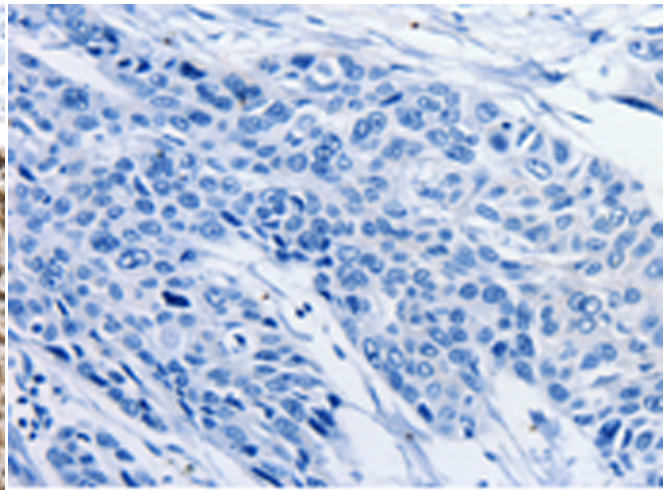
成分: PBS (without Mg²⁺ and Ca²⁺), pH 7.4, 150 mM NaCl, 0.05% Sodium Azide and 40% glycerol

研究领域: Epigenetics and Nuclear Signaling, Cancer

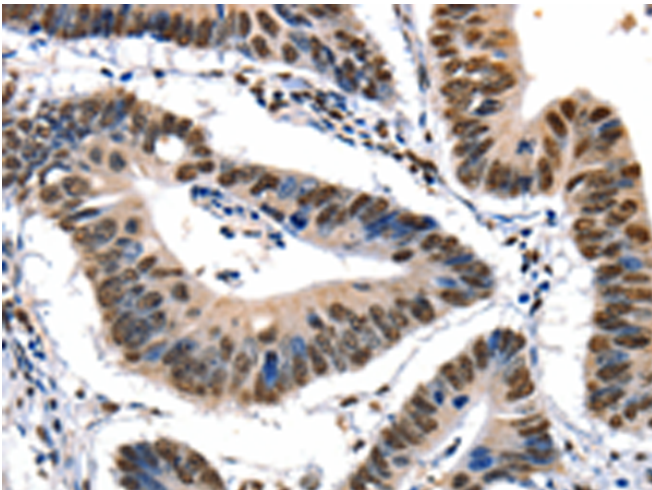
储存和运输: Store at -20°C. Avoid repeated freezing and thawing



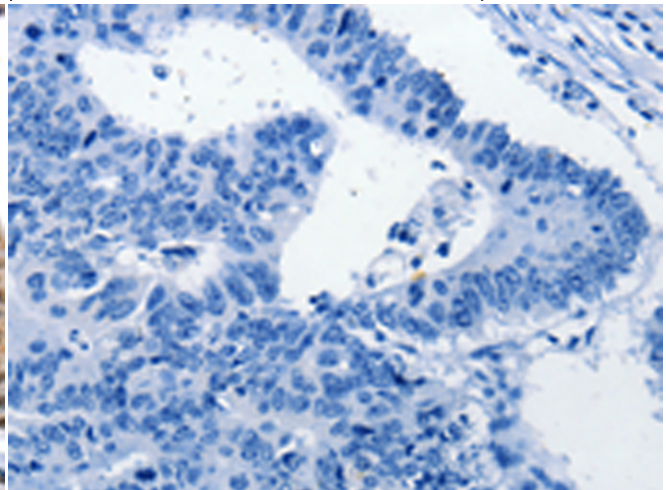
Immunohistochemistry analysis of paraffin embedded Human esophagus cancer tissue using 216608 (XRCC6 Antibody) at a dilution of 1/10 (Nucleus).



In comparison with the IHC on the left, the same paraffin-embedded Human esophagus cancer tissue is first treated with the fusion protein and then with 216608 (Anti-XRCC6 Antibody) at dilution 1/10.



The image on the left is immunohistochemistry of paraffin-embedded Human colon cancer tissue using 216608 (Anti-XRCC6 Antibody) at a dilution of 1/10.



In comparison with the IHC on the left, the same paraffin-embedded Human colon cancer tissue is first treated with fusion protein and then with D220909 (Anti-XRCC6 Antibody) at dilution 1/10.



Product Description

Pioneering GTPase and Oncogene Product Development since 2010
