

XRCC1 RABBIT MAB

货号: N263609

产品全名: XRCC1 兔单克隆抗体

基因符号 XRCC1; DNA repair protein XRCC1; X-ray repair cross-complementing protein 1

UNIPROT ID: P18887

背景: XRCC1 acts as a scaffold protein to coordinate DNA abasic site repair through interaction with several other repair proteins. At least eight XRCC1 protein partners have been identified, including the polynucleotide kinase PNK, DNA ligase III, poly (ADP-ribose) polymerase, and PCNA.

抗原: A synthetic peptide of human XRCC1

经过测试的应用: WB, ICC/IF

推荐稀释比: WB: 1/500-1/1000 IF: 1/50-1/200

种属反应性: Rabbit

克隆性: Rabbit Monoclonal

克隆编号: R02-0B0

分子量: Calculated MW: 69 kDa; Observed MW: 82 kDa

亚型: IgG

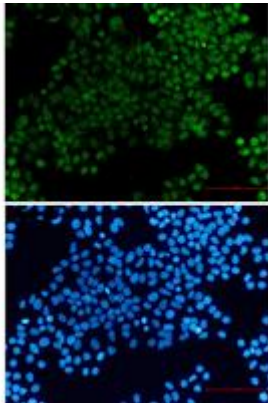
纯化: Affinity Purified

种属反应性: Human, Rat

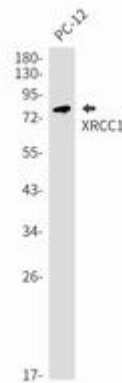
成分: PBS (without Mg²⁺ and Ca²⁺), pH 7.3 containing 50% glycerol, 0.5% BSA and 0.02% sodium azide

研究领域: Epigenetics and Nuclear Signaling

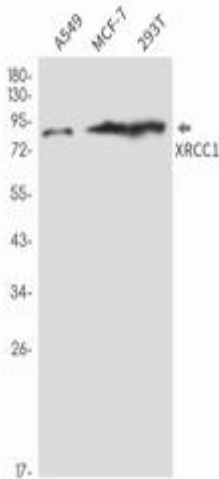
储存和运输: Store at -20°C. Avoid repeated freezing and thawing



Immunocytochemistry analysis of XRCC1 (green) in hela using XRCC1 antibody, and DAPI (blue)



Western blot analysis of XRCC1 in PC-12 lysates using XRCC1 antibody.



Western blot analysis of XRCC1 in A549, MCF-7, 293T lysates using XRCC1 antibody.