

## XPNPEP3 RABBIT PAB

货号: S218747

产品全名: XPNPEP3 兔多抗

基因符号: APP3; ICP55; NPHPL1

**UNIPROT ID:** Q9NQH7 (Gene Accession - BC001681)

**背景:** The protein encoded by this gene belongs to the family of X-pro-aminopeptidases that utilize a metal cofactor, and remove the N-terminal amino acid from peptides with a proline residue in the penultimate position. This protein has been shown to localize to the mitochondria of renal cells, and have a role in ciliary function. Mutations in this gene are associated with nephronophthisis-like nephropathy-1. Alternatively spliced transcript variants encoding different isoforms have been noted for this gene, however, expression of some of these isoforms in vivo is not known.

**抗原:** Fusion protein of human XPNPEP3

**经过测试的应用:** ELISA, WB, IHC

**推荐稀释比:** IHC: 30-150;WB: 200-1000;ELISA: 5000-10000

**种属反应性:** Rabbit

**克隆性:** Rabbit Polyclonal

**亚型:** Immunogen-specific rabbit IgG

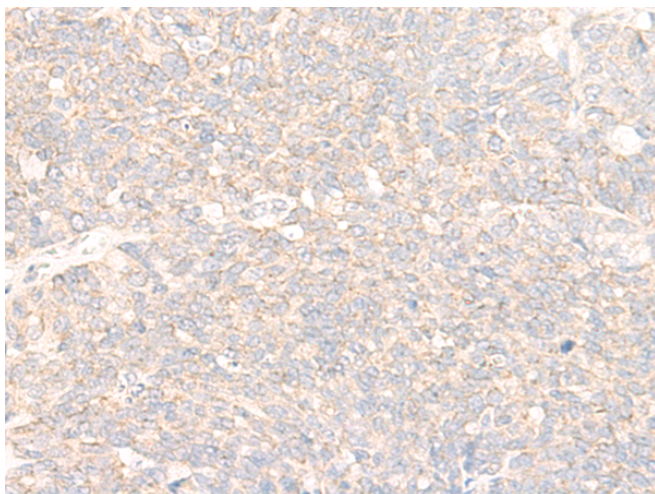
**纯化:** Antigen affinity purification

**种属反应性:** Human, Mouse, Rat

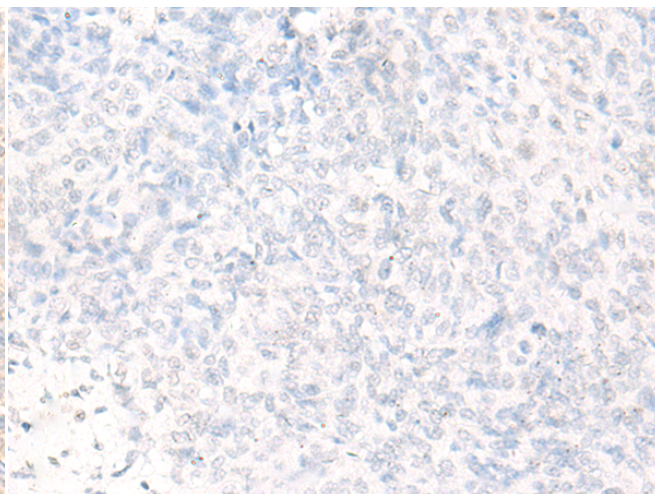
**成分:** PBS (without Mg<sup>2+</sup> and Ca<sup>2+</sup>), pH 7.4, 150 mM NaCl, 0.05% Sodium Azide and 40% glycerol

**研究领域:** Metabolism

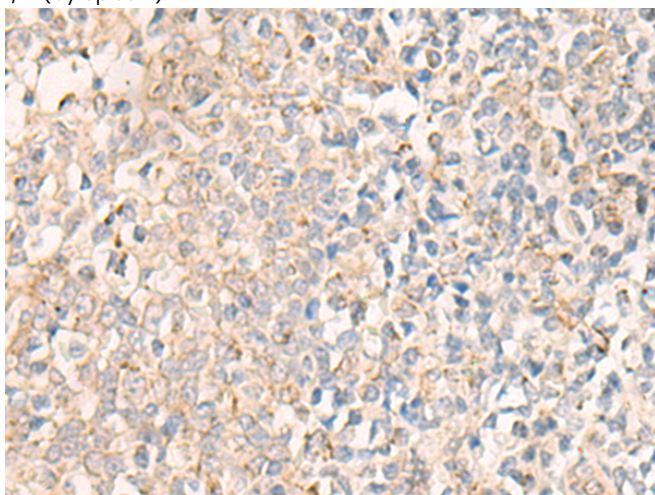
**储存和运输:** Store at -20°C. Avoid repeated freezing and thawing



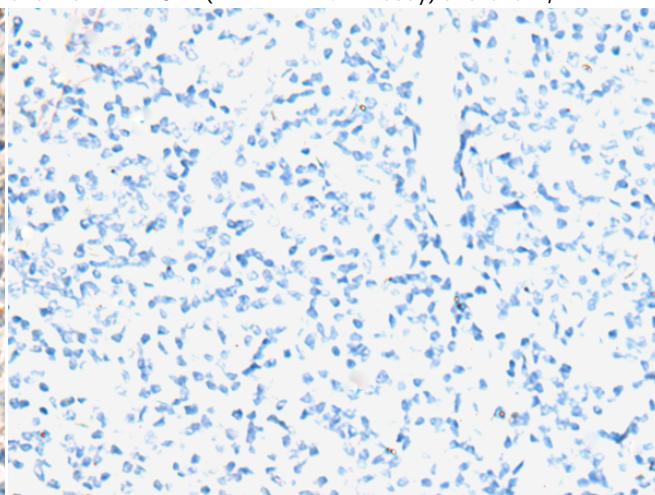
Immunohistochemistry analysis of paraffin embedded Human ovarian cancer tissue using 218747 (XPNPEP3 Antibody) at a dilution of 1/25 (Cytoplasm).



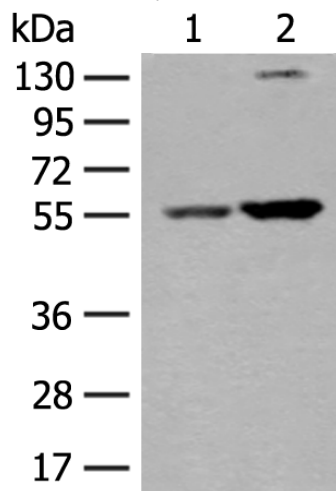
In comparison with the IHC on the left, the same paraffin-embedded Human ovarian cancer tissue is first treated with the fusion protein and then with 218747 (Anti-XPNPEP3 Antibody) at dilution 1/25.



The image on the left is immunohistochemistry of paraffin-embedded Human tonsil tissue using 218747 (Anti-XPNPEP3 Antibody) at a dilution of 1/25.



In comparison with the IHC on the left, the same paraffin-embedded Human tonsil tissue is first treated with fusion protein and then with D225095 (Anti-XPNPEP3 Antibody) at dilution 1/25.



Gel: 8% SDS-PAGE, Lysate: 40 µg;  
 Lane 1-2: PC-3 and 293T cell lysates;  
 Primary antibody: 218747 (XPNPEP3 Antibody) at dilution 1/250;  
 Secondary antibody: Goat anti rabbit IgG at 1/8000 dilution;  
 Exposure time: 3 seconds



# Product Description

Pioneering GTPase and Oncogene Product Development since 2010

---