

XPC RABBIT PAB

货号: S221151

产品全名: XPC 兔多抗

基因符号: XP3; RAD4; XPCC; p125

UNIPROT ID: Q01831 (Gene Accession - NP_004619)

背景: The protein encoded by this gene is a key component of the XPC complex which plays an important role in the early steps of global genome nucleotide excision repair (NER). The encoded protein is important for damage sensing and DNA binding, and shows a preference for single-stranded DNA. Mutations in this gene or some other NER components can result in Xeroderma pigmentosum, a rare autosomal recessive disorder characterized by increased sensitivity to sunlight with the development of carcinomas at an early age. Alternatively spliced transcript variants have been found for this gene.

抗原: Synthetic peptide of human XPC

经过测试的应用: ELISA, IHC

推荐稀释比: IHC: 20-100; ELISA: 5000-10000

种属反应性: Rabbit

克隆性: Rabbit Polyclonal

亚型: Immunogen-specific rabbit IgG

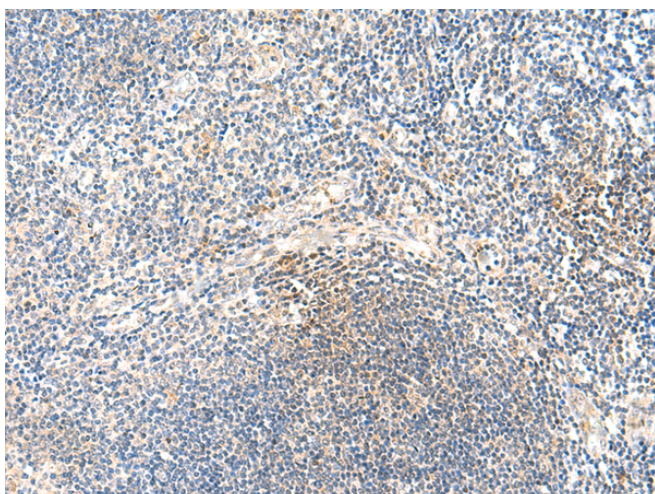
纯化: Antigen affinity purification

种属反应性: Human

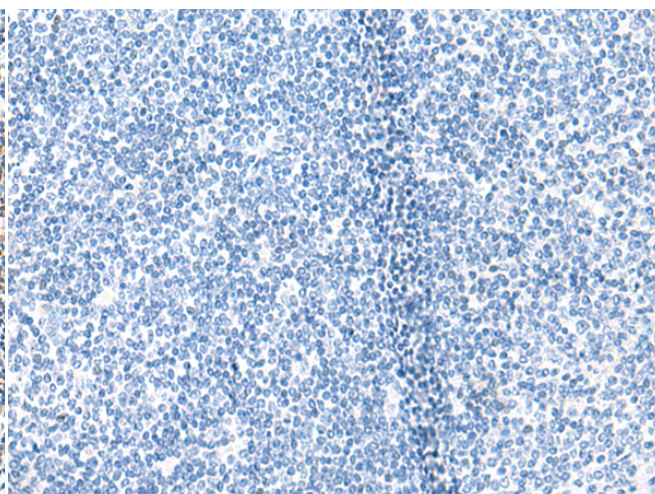
成分: PBS (without Mg²⁺ and Ca²⁺), pH 7.4, 150 mM NaCl, 0.05% Sodium Azide and 40% glycerol

研究领域: Epigenetics and Nuclear Signaling

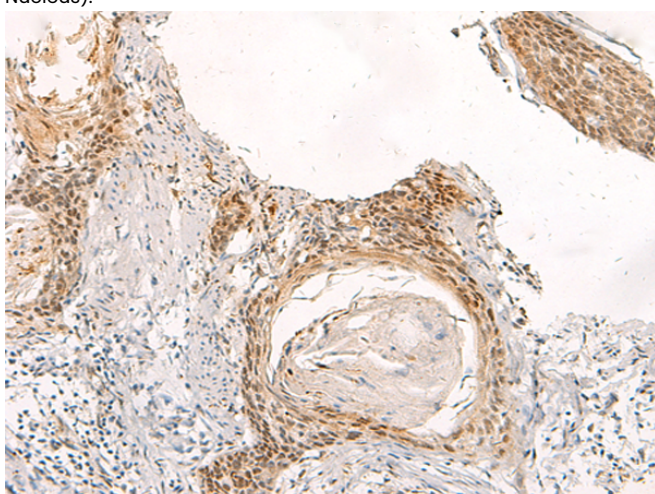
储存和运输: Store at -20°C. Avoid repeated freezing and thawing



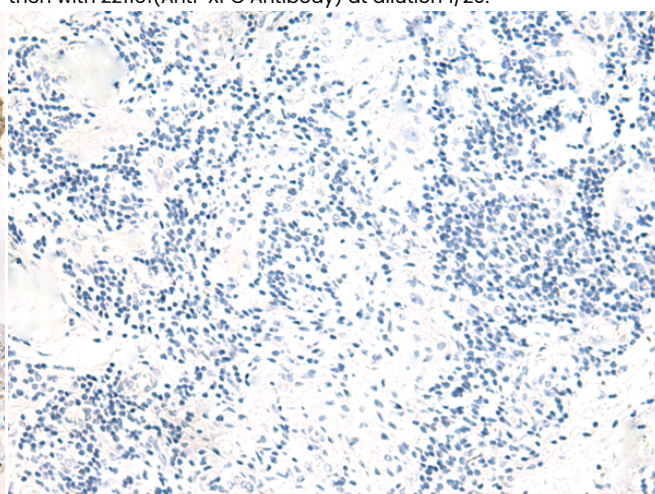
Immunohistochemistry analysis of paraffin embedded Human tonsil tissue using 221151(XPC Antibody) at a dilution of 1/20(Cytoplasm or Nucleus).



In comparison with the IHC on the left, the same paraffin-embedded Human tonsil tissue is first treated with the synthetic peptide and then with 221151(Anti-XPC Antibody) at dilution 1/20.



The image on the left is immunohistochemistry of paraffin-embedded Human esophagus cancer tissue using 221151(Anti-XPC Antibody) at a dilution of 1/20.



In comparison with the IHC on the left, the same paraffin-embedded Human esophagus cancer tissue is first treated with synthetic peptide and then with D262626(Anti-XPC Antibody) at dilution 1/20.



Product Description

Pioneering GTPase and Oncogene Product Development since 2010
