

XKR3 RABBIT PAB

货号: S221147

产品全名: XKR3 兔多抗

基因符号 XRG3; XTES

UNIPROT ID: Q5GH77 (Gene Accession - NP_787074)

背景: XKR3 (MIM 300684) and XKR3 are homologs of the Kell blood group precursor XK (MIM 314850), which is a putative membrane transporter and a component of the XK/Kell complex of the Kell blood group system (Calenda et al., 2006 [PubMed 16431037]).

抗原: Synthetic peptide of human XKR3

经过测试的应用: ELISA, WB, IHC

推荐稀释比: IHC: Oct-50;WB: 200-1000;ELISA: 1000-2000

种属反应性: Rabbit

克隆性: Rabbit Polyclonal

亚型: Immunogen-specific rabbit IgG

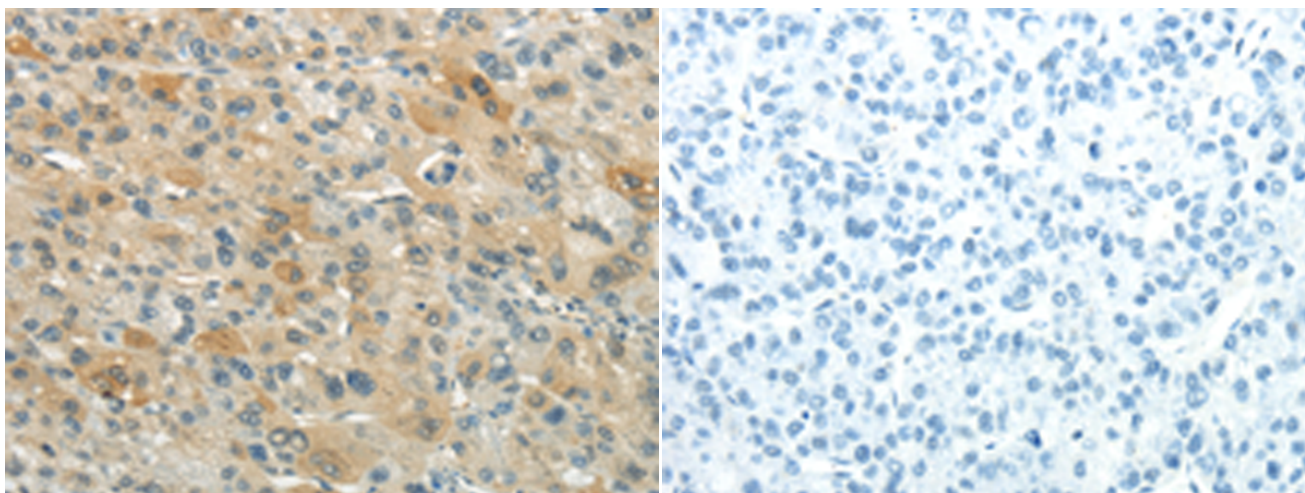
纯化: Antigen affinity purification

种属反应性: Human

成分: PBS (without Mg²⁺ and Ca²⁺), pH 7.4, 150 mM NaCl, 0.05% Sodium Azide and 40% glycerol

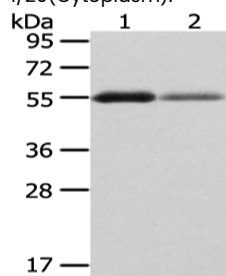
研究领域: Cell Biology

储存和运输: Store at -20°C. Avoid repeated freezing and thawing



Immunohistochemistry analysis of paraffin embedded Human liver cancer tissue using 221147(XKR3 Antibody) at a dilution of 1/20(Cytoplasm).

In comparison with the IHC on the left, the same paraffin-embedded Human liver cancer tissue is first treated with the synthetic peptide and then with 221147(Anti-XKR3 Antibody) at dilution 1/20.



Gel: 8%SDS-PAGE, Lysate: 40 µg;

Lane 1-2: Human thyroid cancer and normal stomach tissue;

Primary antibody: 221147(XKR3 Antibody) at dilution 1/200;

Secondary antibody: Goat anti rabbit IgG at 1/8000 dilution;

Exposure time: 2 minutes