

XIRP1 RABBIT PAB

货号: S221539

产品全名: XIRP1 兔多抗

基因符号: Xin; CMYA1

UNIPROT ID: Q702N8 (Gene Accession - NP_919269)

背景: Protects actin filaments from depolymerization.

抗原: Synthetic peptide of human XIRP1

经过测试的应用: ELISA, IHC

推荐稀释比: IHC: 25-100; ELISA: 5000-10000

种属反应性: Rabbit

克隆性: Rabbit Polyclonal

亚型: Immunogen-specific rabbit IgG

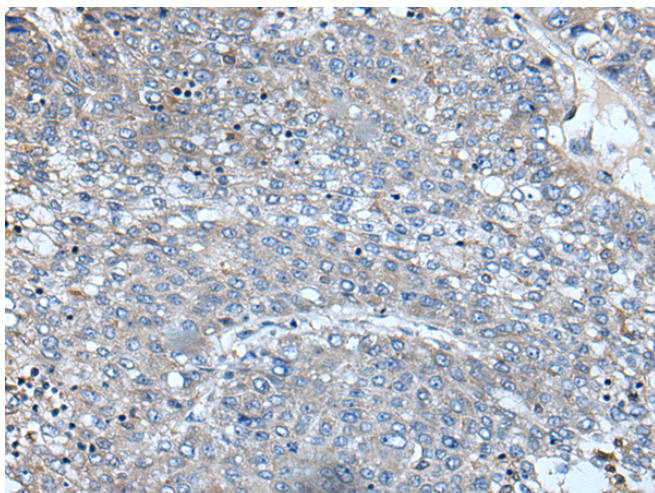
纯化: Antigen affinity purification

种属反应性: Human

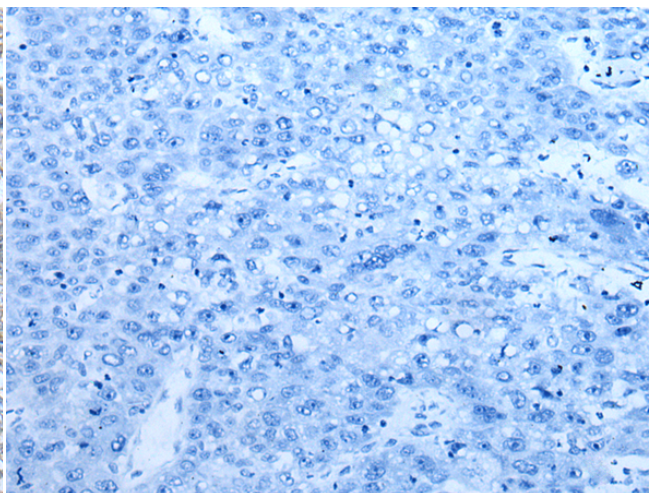
成分: PBS (without Mg²⁺ and Ca²⁺), pH 7.4, 150 mM NaCl, 0.05% Sodium Azide and 40% glycerol

研究领域: Signal Transduction

储存和运输: Store at -20°C. Avoid repeated freezing and thawing



Immunohistochemistry analysis of paraffin embedded Human liver cancer tissue using 221539(XIRP1 Antibody) at a dilution of 1/35(Cytoplasm).



In comparison with the IHC on the left, the same paraffin-embedded Human liver cancer tissue is first treated with the synthetic peptide and then with 221539(Anti-XIRP1 Antibody) at dilution 1/35.