

## **XBP1 RABBIT MAB**

货号: N263608

产品全名: XBP1 兔单克隆抗体

基因符号 XBP1; TREB5; XBP2; X-box-binding protein 1; XBP-1; Tax-responsive element-binding protein 5

**UNIPROT ID:** P17861

**背景:** Acts during endoplasmic reticulum stress (ER) by activating unfolded protein response (UPR) target genes via direct binding to the UPR element (UPRE). Binds DNA preferably to the CRE-like element 5'-GATGACGTG[TG]N(3)[AT]T-3', and also to some TPA response elements (TRE). Binds to the HLA DR-alpha promoter. Binds to the Tax-responsive element (TRE) of HTLV-I.

**抗原:** Recombinant protein of human XBP1

**经过测试的应用:** WB,IP

**推荐稀释比:** WB: 1/500-1/1000 IP: 1/20

**种属反应性:** Rabbit

**克隆性:** Rabbit Monoclonal

**克隆编号:** R04-3E2

**分子量:** Calculated MW: 29 kDa; Observed MW: 29 kDa

**亚型:** IgG

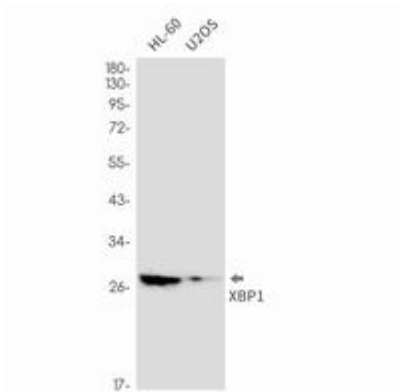
**纯化:** Affinity Purified

**种属反应性:** Human,Mouse

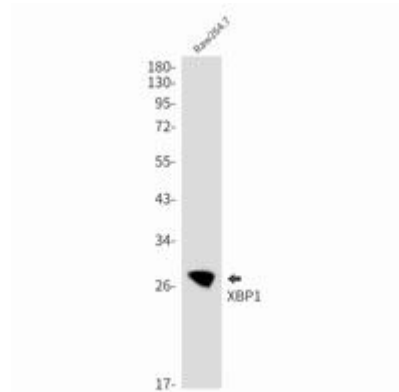
**成分:** PBS (without Mg<sup>2+</sup> and Ca<sup>2+</sup>), pH 7.3 containing 50% glycerol, 0.5% BSA and 0.02% sodium azide

**研究领域:** Epigenetics and Nuclear Signaling

**储存和运输:** Store at -20°C. Avoid repeated freezing and thawing



Western blot analysis of XBPI in HL-60, U2OS lysates using XBPI antibody.



Western blot analysis of XBPI in Raw264.7 lysates using XBPI antibody.