

## XAB2 RABBIT PAB

货号: S215299

产品全名: XAB2 兔多抗

基因符号: HCNP; HCRN; SYF1; NTC90

**UNIPROT ID:** Q9HCS7 (Gene Accession - NP\_064581)

背景: Involved in mRNA splicing, via spliceosome; transcription, DNA-templated; and transcription-coupled nucleotide-excision repair. Located in nucleoplasm. Part of U2-type catalytic step 2 spliceosome.

抗原: Synthetic peptide of human XAB2

经过测试的应用: ELISA, WB, IHC

推荐稀释比: IHC: 50-200; WB: 1000-5000; ELISA: 5000-10000

种属反应性: Rabbit

克隆性: Rabbit Polyclonal

亚型: Immunogen-specific rabbit IgG

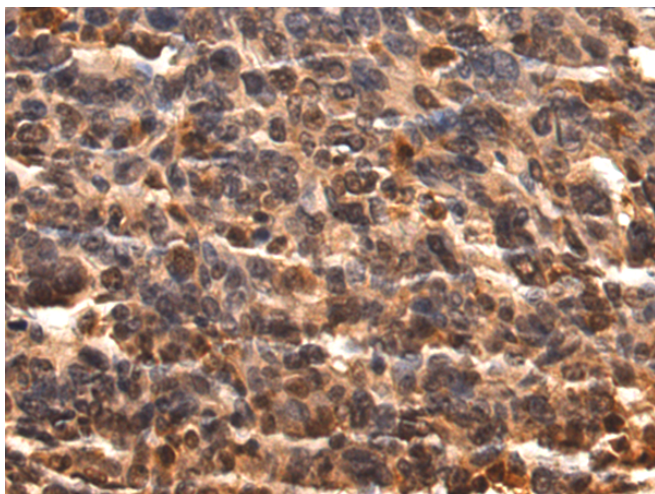
纯化: Antigen affinity purification

种属反应性: Human, Mouse, Rat

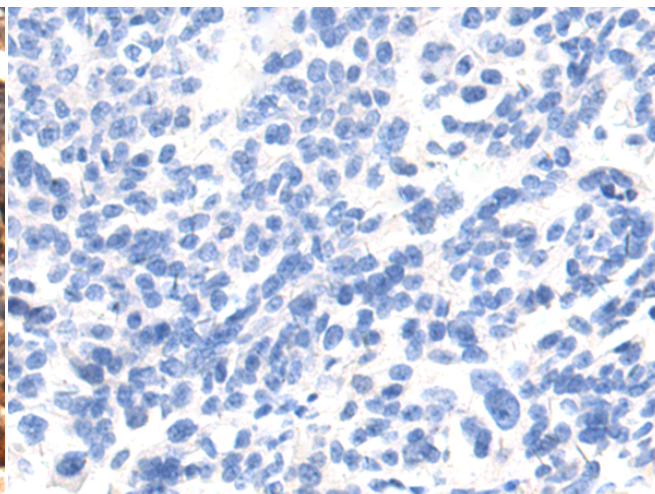
成分: PBS (without Mg<sup>2+</sup> and Ca<sup>2+</sup>), pH 7.4, 150 mM NaCl, 0.05% Sodium Azide and 40% glycerol

研究领域: Epigenetics and Nuclear Signaling

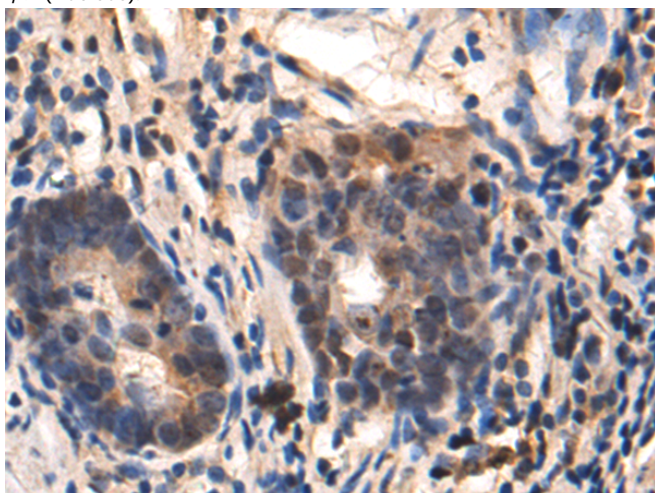
储存和运输: Store at -20°C. Avoid repeated freezing and thawing



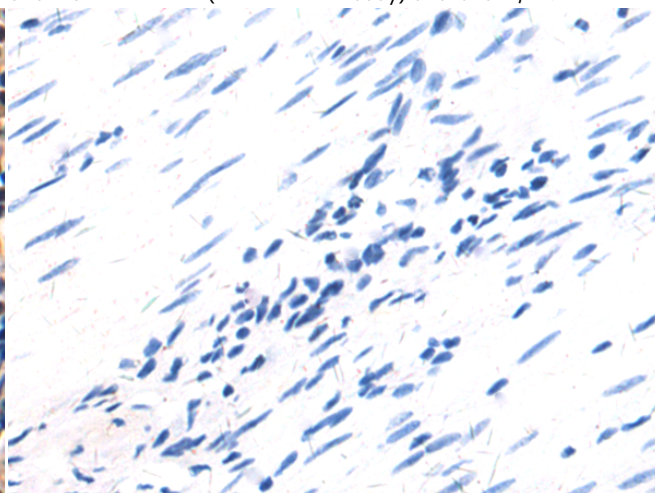
Immunohistochemistry analysis of paraffin embedded Human breast cancer tissue using 215299(XAB2 Antibody) at a dilution of 1/50(Nucleus).



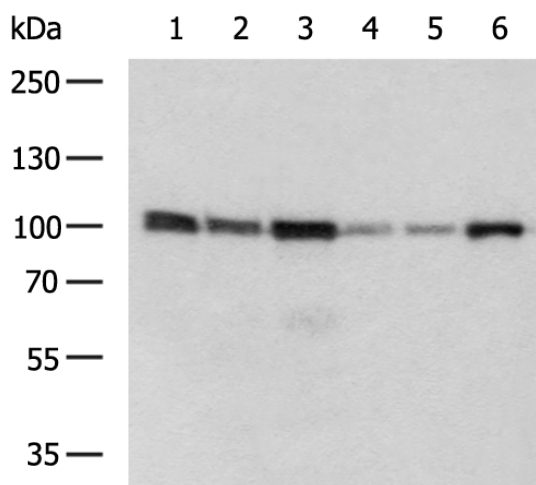
In comparison with the IHC on the left, the same paraffin-embedded Human breast cancer tissue is first treated with the synthetic peptide and then with 215299(Anti-XAB2 Antibody) at dilution 1/50.



The image on the left is immunohistochemistry of paraffin-embedded Human gastric cancer tissue using 215299(Anti-XAB2 Antibody) at a dilution of 1/50.



In comparison with the IHC on the left, the same paraffin-embedded Human gastric cancer tissue is first treated with synthetic peptide and then with D163175(Anti-XAB2 Antibody) at dilution 1/50.



Gel: 6%SDS-PAGE, Lysate: 40 µg;  
 Lane 1-6: 293T, K562, Hela, HepG2, PC3 and NIH/3T3 cell lysates;  
 Primary antibody: 215299(XAB2 Antibody) at dilution 1/1000;  
 Secondary antibody: HRP-conjugated Goat anti rabbit IgG at 1/5000 dilution;  
 Exposure time: 2 seconds



# Product Description

Pioneering GTPase and Oncogene Product Development since 2010

---