

## WWP1 RABBIT PAB

货号: S218034

产品全名: WWP1 兔多抗

基因符号: AIP5; Tiull; hSDRP1

**UNIPROT ID:** Q9H0M0 (Gene Accession - BC036065 )

**背景:** WW domain-containing proteins are found in all eukaryotes and play an important role in the regulation of a wide variety of cellular functions such as protein degradation, transcription, and RNA splicing. This gene encodes a protein which contains 4 tandem WW domains and a HECT (homologous to the E6-associated protein carboxyl terminus) domain. The encoded protein belongs to a family of NEDD4-like proteins, which are E3 ubiquitin-ligase molecules and regulate key trafficking decisions, including targeting of proteins to proteosomes or lysosomes.

**抗原:** Fusion protein of human WWP1

**经过测试的应用:** ELISA, WB, IHC

**推荐稀释比:** IHC: 30-150;WB: 500-2000;ELISA: 2000-5000

**种属反应性:** Rabbit

**克隆性:** Rabbit Polyclonal

**亚型:** Immunogen-specific rabbit IgG

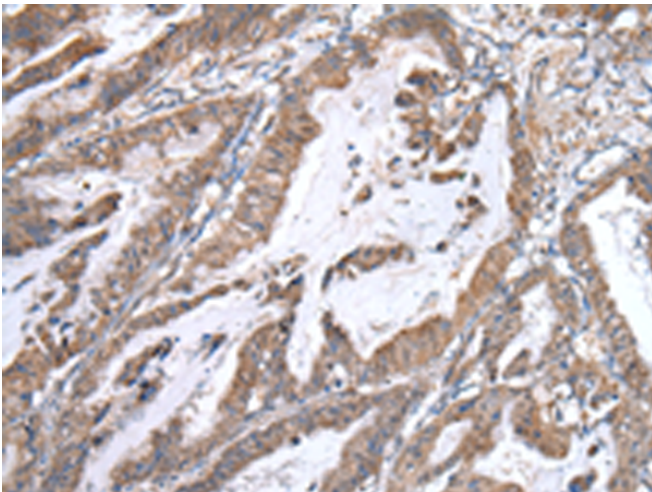
**纯化:** Antigen affinity purification

**种属反应性:** Human, Mouse

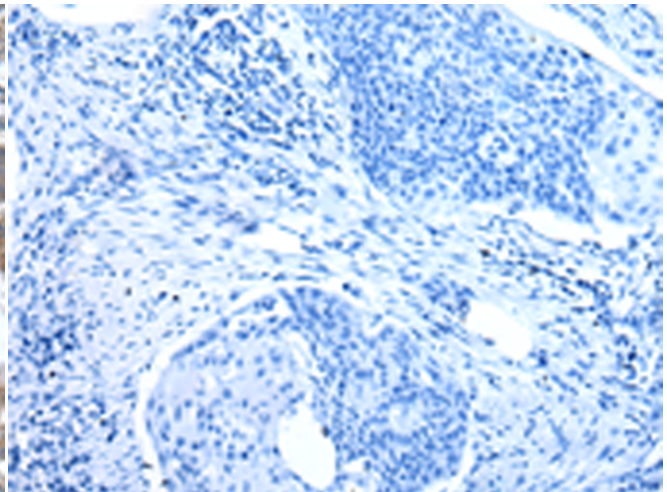
**成分:** PBS (without Mg<sup>2+</sup> and Ca<sup>2+</sup>), pH 7.4, 150 mM NaCl, 0.05% Sodium Azide and 40% glycerol

**研究领域:** Cancer, Cell Biology

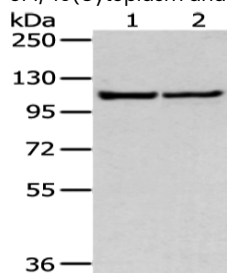
**储存和运输:** Store at -20°C. Avoid repeated freezing and thawing



Immunohistochemistry analysis of paraffin embedded Human esophagus cancer tissue using 218034(WWP1 Antibody) at a dilution of 1/40(Cytoplasm and Nucleus).



In comparison with the IHC on the left, the same paraffin-embedded Human esophagus cancer tissue is first treated with the fusion protein and then with 218034(Anti-WWP1 Antibody) at dilution 1/40.



Gel: 6%SDS-PAGE, Lysate: 40 µg;

Lane 1-2: 231 and hela cell;

Primary antibody: 218034(WWP1 Antibody) at dilution 1/300;

Secondary antibody: Goat anti rabbit IgG at 1/8000 dilution;

Exposure time: 30 seconds