

## WNT1 RABBIT PAB

货号: N225100

产品全名: Wnt1 兔多抗

基因符号 WNT1; INT1; Proto-oncogene Wnt-1; Proto-oncogene Int-1 homolog

**UNIPROT ID:** P04628

**背景:** WNT1: wingless-type MMTV integration site family, member 1. The WNT gene family consists of structurally related genes which encode secreted signaling proteins. These proteins have been implicated in oncogenesis and in several developmental processes, including regulation of cell fate and patterning during embryogenesis. This gene is a member of the WNT gene family. It is very conserved in evolution, and the protein encoded by this gene is known to be 98% identical to the mouse Wnt1 protein at the amino acid level. The studies in mouse indicate that the Wnt1 protein functions in the induction of the mesencephalon and cerebellum. This gene was originally considered as a candidate gene for Joubert syndrome, an autosomal recessive disorder with cerebellar hypoplasia as a leading feature. However, further studies suggested that the gene mutations might not have a significant role in Joubert syndrome. This gene is clustered with another family member, WNT10B, in the chromosome 12q13 region.

**抗原:** The antiserum was produced against synthesized peptide derived from human WNT1. AA range:301-350

**经过测试的应用:** WB,IHC-F,IHC-P,ICC/IF,ELISA

**推荐稀释比:** WB: 1/500-1/1000 IHC: 1/50-1/100 IF: 1/50-1/200 ELISA: 1/10000

**种属反应性:** Rabbit

**克隆性:** Rabbit Polyclonal

**分子量:** Calculated MW: 41 kDa; Observed MW: 45 kDa

**亚型:** IgG

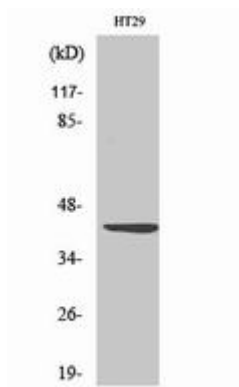
**纯化:** Affinity Purified

**种属反应性:** Human,Mouse

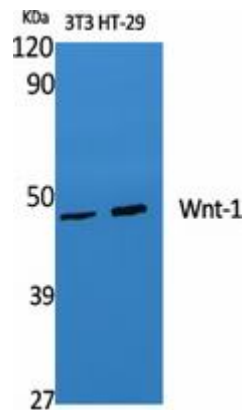
**成分:** PBS (without Mg<sup>2+</sup> and Ca<sup>2+</sup>), pH 7.3 containing 50% glycerol, 0.5% BSA and 0.02% sodium azide

**研究领域:** Stem Cells

**储存和运输:** Store at -20°C. Avoid repeated freezing and thawing



Western blot analysis of Wnt1 in HT-29 lysates using Wnt1 antibody.



Western blot analysis of Wnt1 in various lysates using Wnt1 antibody.