

WDSUB1 RABBIT PAB

货号: S221544

产品全名: WDSUB1 兔多抗

基因符号: UBOX6; WDSAM1

UNIPROT ID: Q8N9V3 (Gene Accession - NP_689741)

背景: Predicted to enable ubiquitin-protein transferase activity. Predicted to be involved in protein ubiquitination.

抗原: Synthetic peptide of human WDSUB1

经过测试的应用: ELISA, WB, IHC

推荐稀释比: IHC: 100-300; WB: 500-2000; ELISA: 5000-10000

种属反应性: Rabbit

克隆性: Rabbit Polyclonal

亚型: Immunogen-specific rabbit IgG

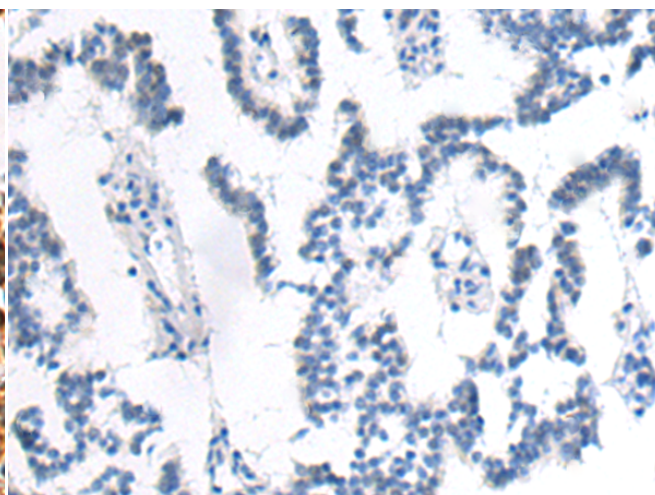
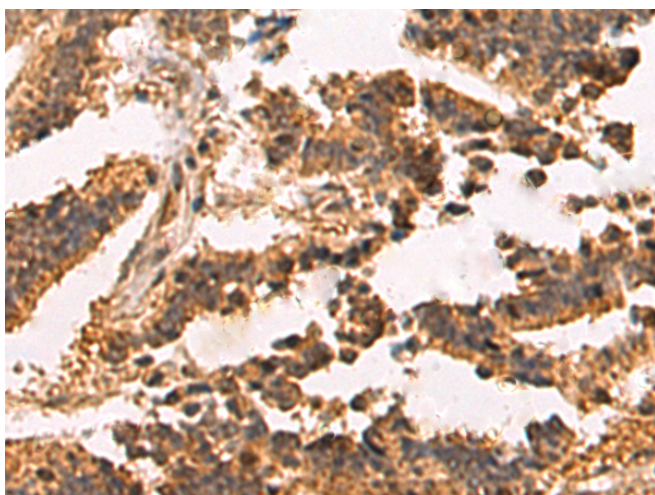
纯化: Antigen affinity purification

种属反应性: Human, Mouse

成分: PBS (without Mg²⁺ and Ca²⁺), pH 7.4, 150 mM NaCl, 0.05% Sodium Azide and 40% glycerol

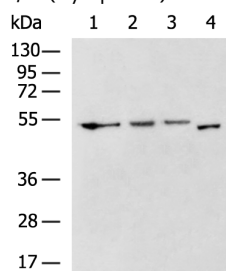
研究领域: Cell Biology

储存和运输: Store at -20°C. Avoid repeated freezing and thawing



Immunohistochemistry analysis of paraffin embedded Human liver cancer tissue using 221544 (WDSUB1 Antibody) at a dilution of 1/75 (Cytoplasm).

In comparison with the IHC on the left, the same paraffin-embedded Human liver cancer tissue is first treated with the synthetic peptide and then with 221544 (Anti-WDSUB1 Antibody) at dilution 1/75.



Gel: 8% SDS-PAGE, Lysate: 40 µg;

Lane 1-4: 231, 293T, A172 cell, Mouse kidney tissue lysates;

Primary antibody: 221544 (WDSUB1 Antibody) at dilution 1/1000;

Secondary antibody: HRP-conjugated Goat anti rabbit IgG at 1/5000 dilution;

Exposure time: 2 minutes