

## WDR19 RABBIT PAB

货号: S218023

产品全名: WDR19 兔多抗

基因符号: ATD5; CED4; DYF-2; ORF26; Oseg6; PWDMP; SRTD5; IFT144; NPHPI3

**UNIPROT ID:** Q8NEZ3 (Gene Accession - BC032578)

**背景:** This gene encodes a member of the WD repeat protein family. WD repeats are minimally conserved regions of approximately 40 amino acids typically bracketed by gly-his and trp-asn (GH-WD), which may facilitate formation of heterotrimeric or multiprotein complexes. Members of this family are involved in a variety of cellular processes, including cell cycle progression, signal transduction, apoptosis, and gene regulation. This protein contains six WD repeats, a clathrin heavy-chain repeat, and three transmembrane domains. This gene is conserved from *C. elegans* to human. It may participate in androgen-regulated signaling mechanisms or in the vesicular trafficking of androgen-regulated secretory processes. Alternatively spliced transcript variants encoding distinct isoforms have been reported but the full-length nature of one of these variants has not been defined.

**抗原:** Fusion protein of human WDR19

**经过测试的应用:** ELISA, IHC

**推荐稀释比:** IHC: 25-100; ELISA: 2000-5000

**种属反应性:** Rabbit

**克隆性:** Rabbit Polyclonal

**亚型:** Immunogen-specific rabbit IgG

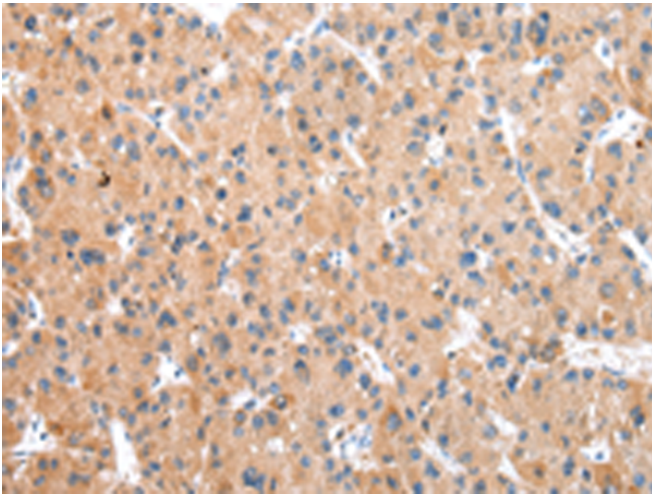
**纯化:** Antigen affinity purification

**种属反应性:** Human

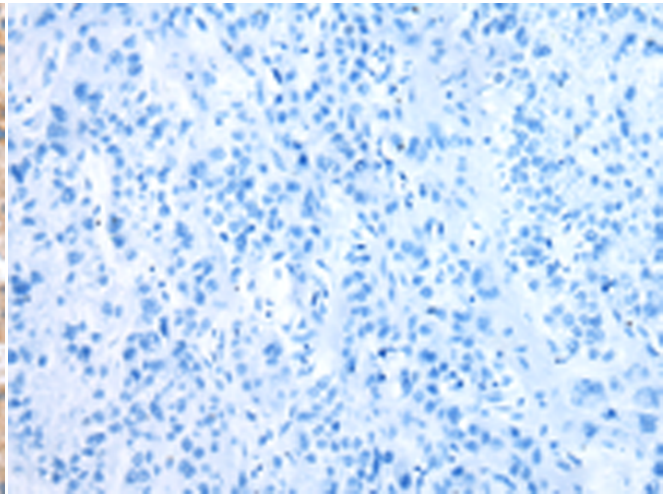
**成分:** PBS (without Mg<sup>2+</sup> and Ca<sup>2+</sup>), pH 7.4, 150 mM NaCl, 0.05% Sodium Azide and 40% glycerol

**研究领域:** Signal Transduction, Cancer

**储存和运输:** Store at -20°C. Avoid repeated freezing and thawing



Immunohistochemistry analysis of paraffin embedded Human liver cancer tissue using 218023(WDR19 Antibody) at a dilution of 1/30(Cytoplasm).



In comparison with the IHC on the left, the same paraffin-embedded Human liver cancer tissue is first treated with the fusion protein and then with 218023(Anti-WDR19 Antibody) at dilution 1/30.