

WDFY4 RABBIT PAB

货号: S218283

产品全名: WDFY4 兔多抗

基因符号: C10orf64

UNIPROT ID: Q6ZS81 (Gene Accession - BC034937)

背景: WDFY4 is predominantly expressed in the immune tissues. The function of WDFY4 is not well known;

抗原: Fusion protein of human WDFY4

经过测试的应用: ELISA, IHC

推荐稀释比: IHC: 40-200; ELISA: 5000-10000

种属反应性: Rabbit

克隆性: Rabbit Polyclonal

亚型: Immunogen-specific rabbit IgG

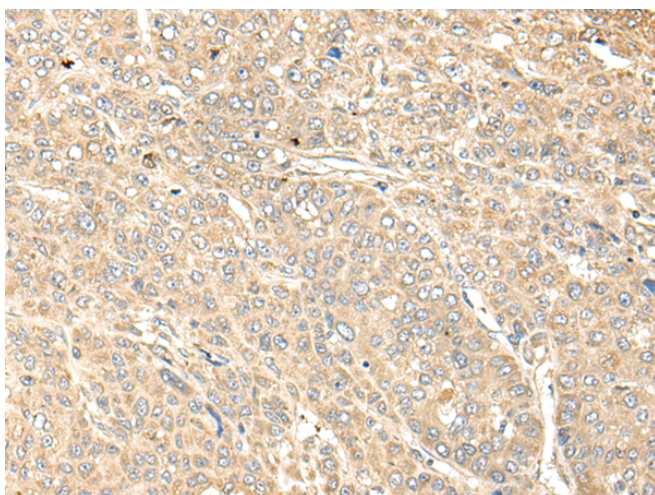
纯化: Antigen affinity purification

种属反应性: Human

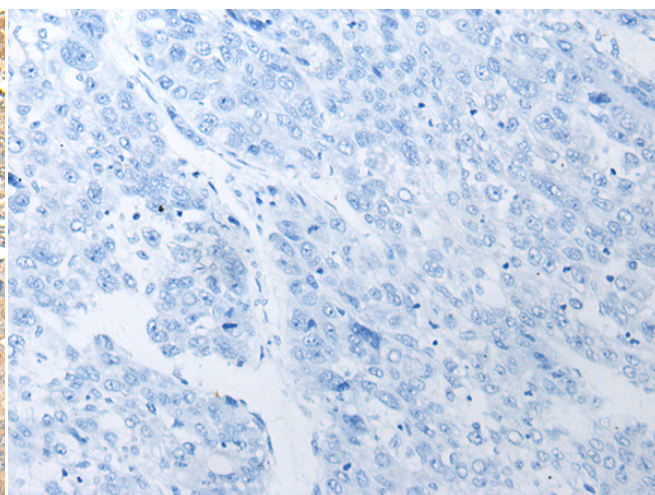
成分: PBS (without Mg²⁺ and Ca²⁺), pH 7.4, 150 mM NaCl, 0.05% Sodium Azide and 40% glycerol

研究领域: Cell Biology

储存和运输: Store at -20°C. Avoid repeated freezing and thawing



Immunohistochemistry analysis of paraffin embedded Human liver cancer tissue using 218283(WDFY4 Antibody) at a dilution of 1/50(Cytoplasm).



In comparison with the IHC on the left, the same paraffin-embedded Human liver cancer tissue is first treated with the fusion protein and then with 218283(Anti-WDFY4 Antibody) at dilution 1/50.