

## WDFY3 RABBIT PAB

货号: S218281

产品全名: WDFY3 兔多抗

基因符号: ALFY; ZFYVE25

**UNIPROT ID:** Q8IZQ1 (Gene Accession - BC015214 )

**背景:** This gene encodes a phosphatidylinositol 3-phosphate-binding protein that functions as a master conductor for aggregate clearance by autophagy. This protein shuttles from the nuclear membrane to colocalize with aggregated proteins, where it complexes with other autophagic components to achieve macroautophagy-mediated clearance of these aggregated proteins. However, it is not necessary for starvation-induced macroautophagy.

**抗原:** Fusion protein of human WDFY3

**经过测试的应用:** ELISA, WB, IHC

**推荐稀释比:** IHC: 50-300;WB: 200-1000;ELISA: 5000-10000

**种属反应性:** Rabbit

**克隆性:** Rabbit Polyclonal

**亚型:** Immunogen-specific rabbit IgG

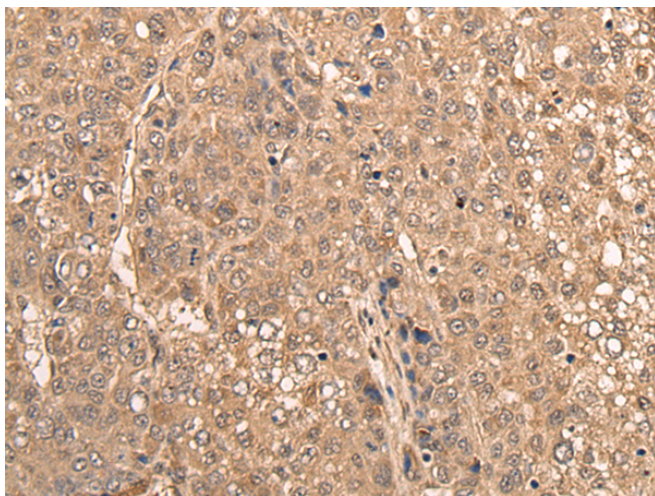
**纯化:** Antigen affinity purification

**种属反应性:** Human, Mouse

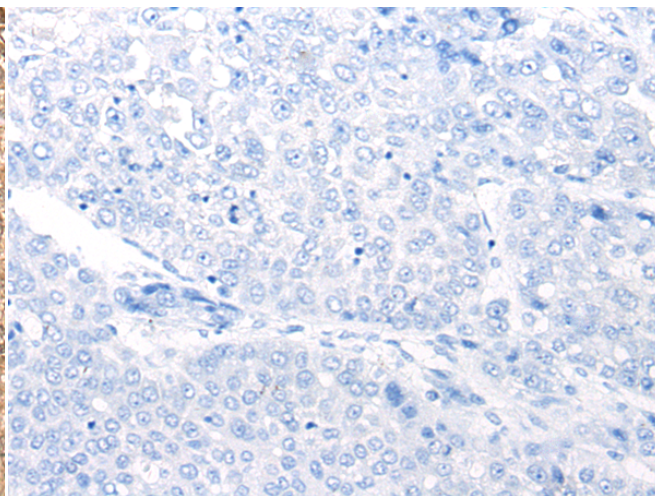
**成分:** PBS (without Mg<sup>2+</sup> and Ca<sup>2+</sup>), pH 7.4, 150 mM NaCl, 0.05% Sodium Azide and 40% glycerol

**研究领域:** Cardiovascular

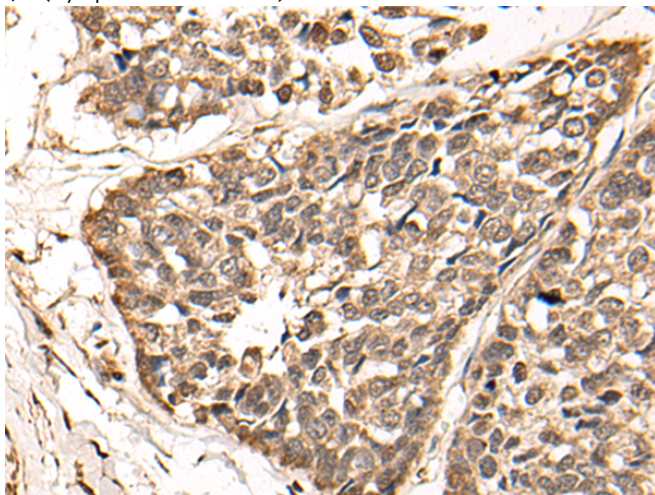
**储存和运输:** Store at -20°C. Avoid repeated freezing and thawing



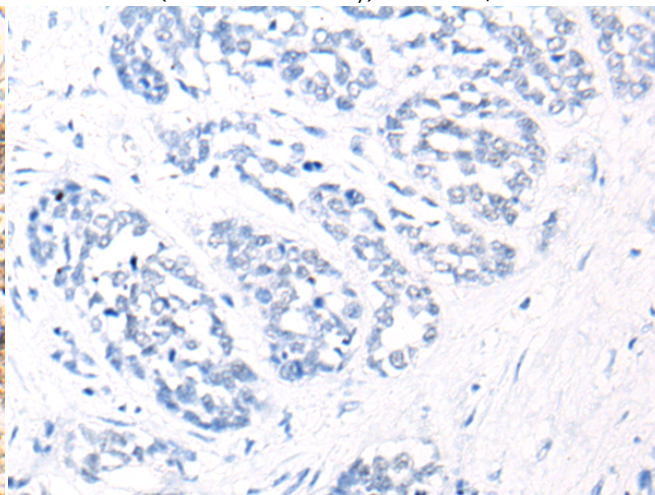
Immunohistochemistry analysis of paraffin embedded Human liver cancer tissue using 218281(WDFY3 Antibody) at a dilution of 1/70(Cytoplasm and Nucleus).



In comparison with the IHC on the left, the same paraffin-embedded Human liver cancer tissue is first treated with the fusion protein and then with 218281(Anti-WDFY3 Antibody) at dilution 1/70.

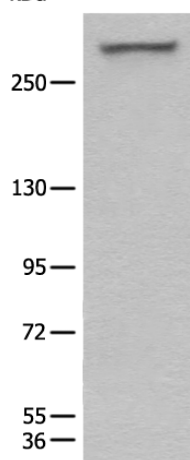


The image on the left is immunohistochemistry of paraffin-embedded Human esophagus cancer tissue using 218281(Anti-WDFY3 Antibody) at a dilution of 1/70.



In comparison with the IHC on the left, the same paraffin-embedded Human esophagus cancer tissue is first treated with fusion protein and then with D224087(Anti-WDFY3 Antibody) at dilution 1/70.

kDa



Gel: 6%SDS-PAGE, Lysate: 40 µg;

Lane: HeLa cell lysate;

Primary antibody: 218281(WDFY3 Antibody) at dilution 1/650;

Secondary antibody: Goat anti rabbit IgG at 1/8000 dilution;

Exposure time: 1 second



# Product Description

Pioneering GTPase and Oncogene Product Development since 2010

---