

## WDFY2 RABBIT PAB

货号: S218284

产品全名: WDFY2 兔多抗

基因符号: PROF; WDF2; ZFYVE22

**UNIPROT ID:** Q96P53 (Gene Accession - BC014004)

**背景:** WD repeat and FYVE domain-containing protein 2 (WDFY2), also known as WDF2 and ZFYVE22, is a 400 amino acid protein that localizes to a set of small endosomes that are found within 100 nm from the plasma membrane. Highly conserved between species, WDFY2 consists of one FYVE-type zinc finger and seven WD repeats. The FYVE domain is a cysteine-rich domain of about 70 amino acids. Its primary role is to target signal-transducing proteins to cell membranes through binding to the membrane lipid phosphatidylinositol-3-phosphate with high specificity. WD-repeats are generally found in clusters of seven. They have no intrinsic catalytic activity, but they serve as a platform for protein-protein interactions. WDFY2 is suspected to play a critical role in the endocytic pathway.

**抗原:** Fusion protein of human WDFY2

**经过测试的应用:** ELISA, WB, IHC

**推荐稀释比:** IHC: 30-150; WB: 500-2000; ELISA: 5000-10000

**种属反应性:** Rabbit

**克隆性:** Rabbit Polyclonal

**亚型:** Immunogen-specific rabbit IgG

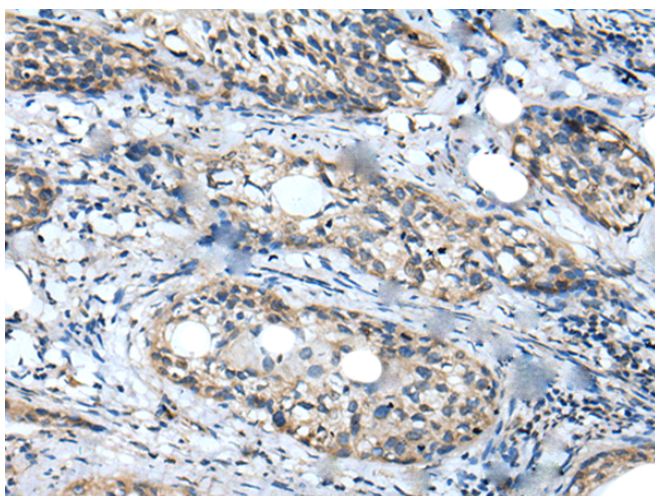
**纯化:** Antigen affinity purification

**种属反应性:** Human, Mouse

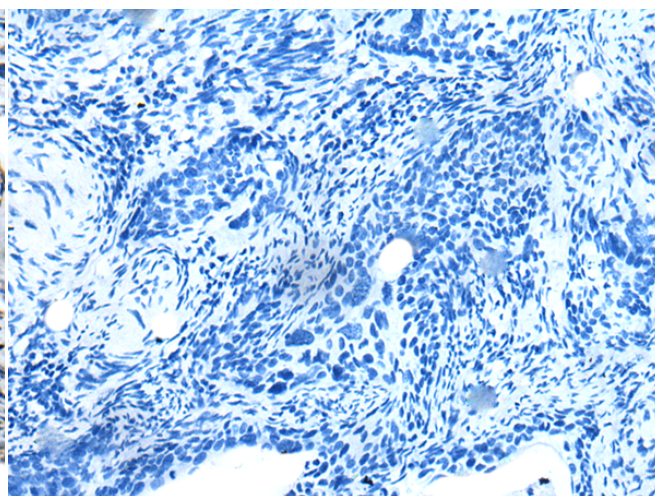
**成分:** PBS (without Mg<sup>2+</sup> and Ca<sup>2+</sup>), pH 7.4, 150 mM NaCl, 0.05% Sodium Azide and 40% glycerol

**研究领域:** Signal Transduction

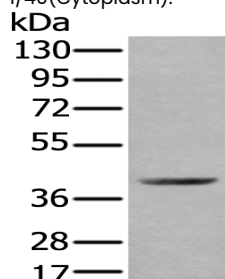
**储存和运输:** Store at -20°C. Avoid repeated freezing and thawing



Immunohistochemistry analysis of paraffin embedded Human cervical cancer tissue using 218284 (WDFY2 Antibody) at a dilution of 1/40 (Cytoplasm).



In comparison with the IHC on the left, the same paraffin-embedded Human cervical cancer tissue is first treated with the fusion protein and then with 218284 (Anti-WDFY2 Antibody) at dilution 1/40.



Gel: 8% SDS-PAGE, Lysate: 40 µg;

Lane: Mouse kidney tissue lysate;

Primary antibody: 218284 (WDFY2 Antibody) at dilution 1/350;

Secondary antibody: Goat anti rabbit IgG at 1/8000 dilution;

Exposure time: 15 seconds