

VSNL1 RABBIT PAB

货号: S213289

产品全名: VSNL1 兔多抗

基因符号: HLP3, VILIP, HPCAL3, HUVISL1, VILIP-1

UNIPROT ID: P62760 (Gene Accession - NP_003376)

背景: This gene is a member of the visinin/recoverin subfamily of neuronal calcium sensor proteins. The encoded protein is strongly expressed in granule cells of the cerebellum where it associates with membranes in a calcium-dependent manner and modulates intracellular signaling pathways of the central nervous system by directly or indirectly regulating the activity of adenylyl cyclase. Alternatively spliced transcript variants have been observed, but their full-length nature has not been determined.

抗原: Synthetic peptide of human VSNL1

经过测试的应用: ELISA, WB, IHC

推荐稀释比: IHC: 50-200;WB: 1000-3000;ELISA: 2000-20000

种属反应性: Rabbit

克隆性: Rabbit Polyclonal

亚型: Immunogen-specific rabbit IgG

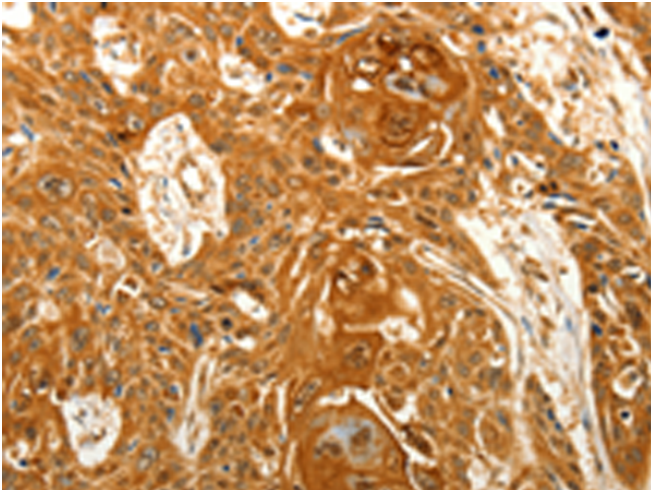
纯化: Antigen affinity purification

种属反应性: Human, Mouse, Rat

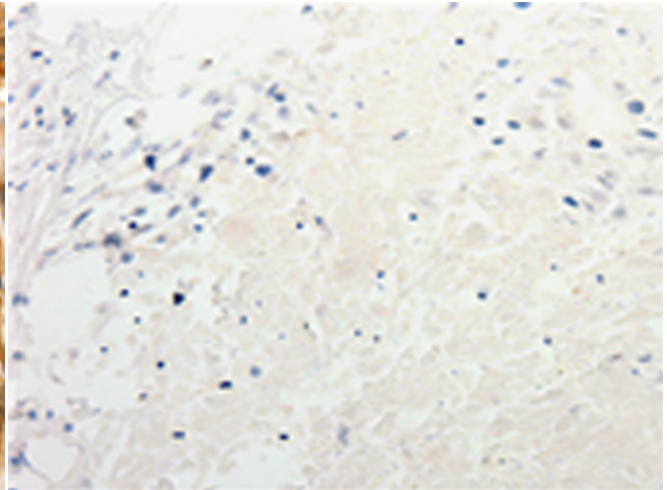
成分: PBS (without Mg²⁺ and Ca²⁺), pH 7.4, 150 mM NaCl, 0.05% Sodium Azide and 40% glycerol

研究领域: Signal Transduction, Cancer

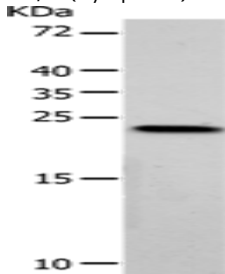
储存和运输: Store at -20°C. Avoid repeated freezing and thawing



Immunohistochemistry analysis of paraffin embedded Human esophagus cancer tissue using 213289 (VSNL1 Antibody) at a dilution of 1/25 (Cytoplasm).



In comparison with the IHC on the left, the same paraffin-embedded Human esophagus cancer tissue is first treated with the synthetic peptide and then with 213289 (Anti-VSNL1 Antibody) at dilution 1/25.



Gel: 10%SDS-PAGE, Lysate: 40 µg;

Lane: HeLa cells;

Primary antibody: 213289 (VSNL1 Antibody) at dilution 1/900;

Secondary antibody: Goat anti rabbit IgG at 1/8000 dilution;

Exposure time: 5 seconds