

VSIG2 RABBIT PAB

货号: N225224

产品全名: VSIG2 兔多抗

基因符号 V-set and immunoglobulin domain-containing protein 2;
Cortical thymocyte-like protein; CT-like protein; CTH; CTXL;
UNQ2770/PRO7154

UNIPROT ID: Q96IQ7

背景: Predicted to be located in membrane. Predicted to be integral component of plasma membrane.

抗原: Synthesized peptide derived from human CTXL. at AA range: 260-290

经过测试的应用: WB,ELISA

推荐稀释比: WB: 1/500-1/1000 ELISA: 1/10000

种属反应性: Rabbit

克隆性: Rabbit Polyclonal

分子量: Calculated MW: 34 kDa; Observed MW: 34 kDa

亚型: IgG

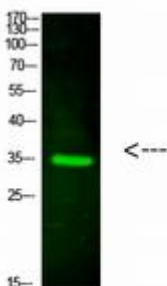
纯化: Affinity Purified

种属反应性: Human

成分: PBS (without Mg²⁺ and Ca²⁺), pH 7.3 containing 50% glycerol, 0.5% BSA and 0.02% sodium azide

研究领域: Cell Biology

储存和运输: Store at -20°C. Avoid repeated freezing and thawing



Western blot analysis of VSIG2 in HeLa lysates using VSIG2 antibody.