

VPS4A RABBIT PAB

货号: S221106

产品全名: VPS4A 兔多抗

基因符号 SKD1; SKD2; VPS4; SKD1A; VPS4-1

UNIPROT ID: Q9UN37 (Gene Accession - NP_037377)

背景: The protein encoded by this gene is a member of the AAA protein family (ATPases associated with diverse cellular activities), and is the homolog of the yeast Vps4 protein. In humans, two paralogs of the yeast protein have been identified. The former share a high degree of aa sequence similarity with each other, and also with yeast Vps4 and mouse Skd1 proteins. The mouse Skd1 (suppressor of K⁺ transport defect 1) has been shown to be really an yeast Vps4 ortholog. Functional studies indicate that both human paralogs associate with the endosomal compartments, and are involved in intracellular protein trafficking, similar to Vps4 protein in yeast. The gene encoding this paralog has been mapped to chromosome 16; the gene for the other resides on chromosome 18.

抗原: Synthetic peptide of human VPS4A

经过测试的应用: ELISA, WB, IHC

推荐稀释比: IHC: 50-100;WB: 500-2000;ELISA: 5000-10000

种属反应性: Rabbit

克隆性: Rabbit Polyclonal

亚型: Immunogen-specific rabbit IgG

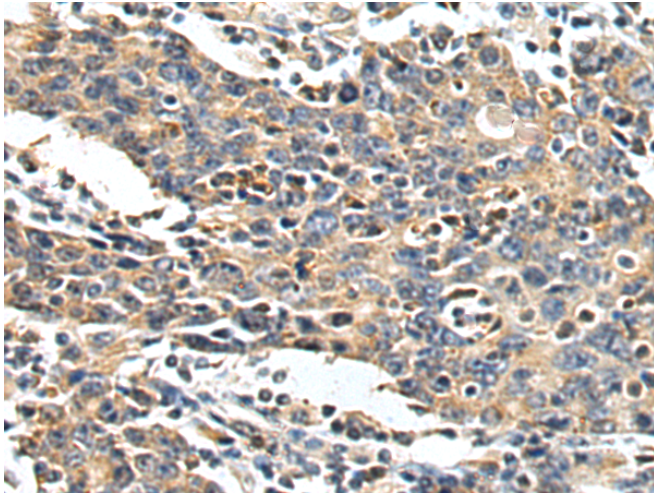
纯化: Antigen affinity purification

种属反应性: Human, Mouse, Rat

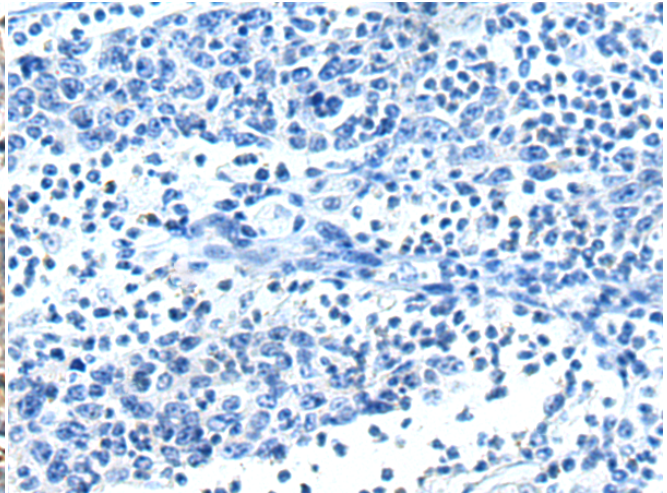
成分: PBS (without Mg²⁺ and Ca²⁺), pH 7.4, 150 mM NaCl, 0.05% Sodium Azide and 40% glycerol

研究领域: Signal Transduction, Cancer

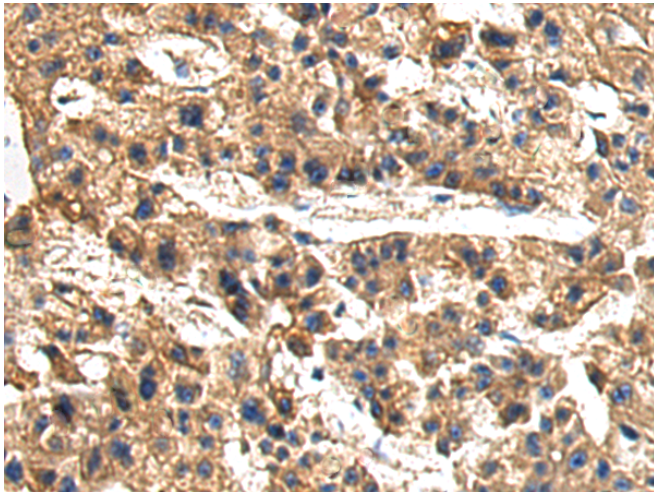
储存和运输: Store at -20°C. Avoid repeated freezing and thawing



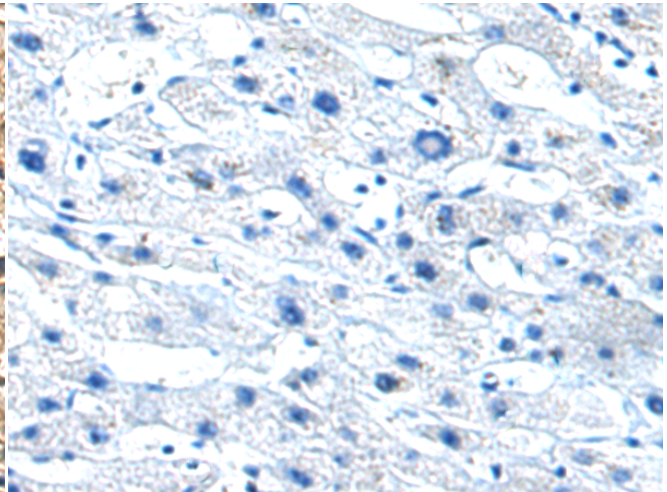
Immunohistochemistry analysis of paraffin embedded Human gastric cancer tissue using 221106(VPS4A Antibody) at a dilution of 1/25(Cytoplasm).



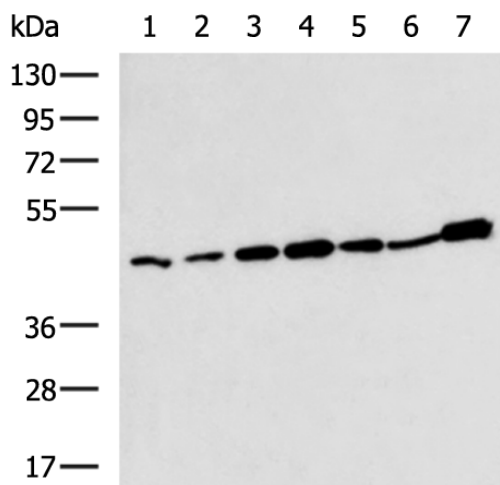
In comparison with the IHC on the left, the same paraffin-embedded Human gastric cancer tissue is first treated with the synthetic peptide and then with 221106(Anti-VPS4A Antibody) at dilution 1/25.



The image on the left is immunohistochemistry of paraffin-embedded Human prostate cancer tissue using 221106(Anti-VPS4A Antibody) at a dilution of 1/25.



In comparison with the IHC on the left, the same paraffin-embedded Human prostate cancer tissue is first treated with synthetic peptide and then with D262482(Anti-VPS4A Antibody) at dilution 1/25.



Gel: 8%SDS-PAGE, Lysate: 40 µg;
 Lane 1-7: MCF-7, HeLa, A172, 293T, HepG2 cell, Mouse skeletal muscle tissue, Mouse brain tissue lysates;
 Primary antibody: 221106(VPS4A Antibody) at dilution 1/400;
 Secondary antibody: HRP-conjugated Goat anti rabbit IgG at 1/5000 dilution;
 Exposure time: 1 minute



Product Description

Pioneering GTPase and Oncogene Product Development since 2010
