

## VPS36 RABBIT PAB

货号: S221109

产品全名: VPS36 兔多抗

基因符号: EAP45; C13orf9; CGI-145

**UNIPROT ID:** Q86VNI (Gene Accession - NP\_057159)

**背景:** This gene encodes a protein that is a subunit of the endosomal sorting complex required for transport II (ESCRT-II). This protein complex functions in sorting of ubiquitinated membrane proteins during endocytosis. A similar protein complex in rat is associated with RNA polymerase elongation factor II.

**抗原:** Synthetic peptide of human VPS36

**经过测试的应用:** ELISA, IHC

**推荐稀释比:** IHC: 30-150; ELISA: 2000-10000

**种属反应性:** Rabbit

**克隆性:** Rabbit Polyclonal

**亚型:** Immunogen-specific rabbit IgG

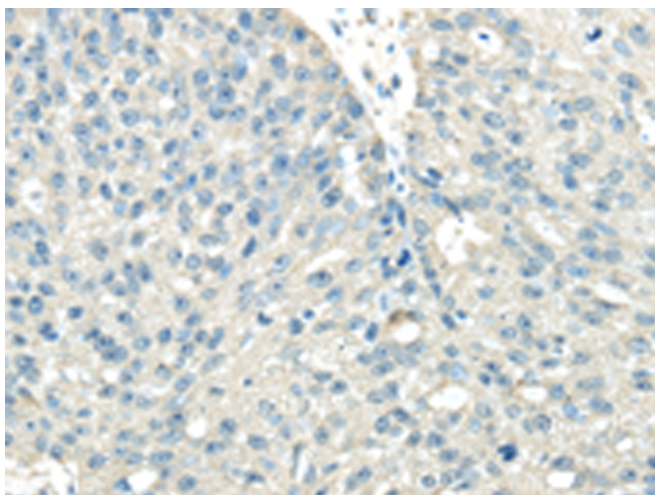
**纯化:** Antigen affinity purification

**种属反应性:** Human, Mouse, Rat

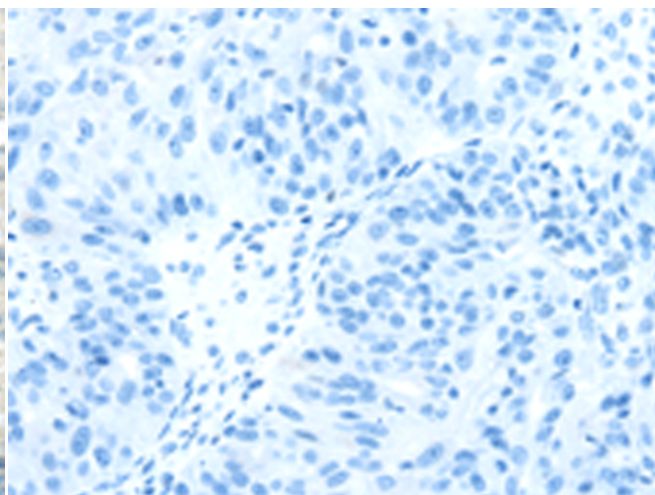
**成分:** PBS (without Mg<sup>2+</sup> and Ca<sup>2+</sup>), pH 7.4, 150 mM NaCl, 0.05% Sodium Azide and 40% glycerol

**研究领域:** Signal Transduction, Cell Biology

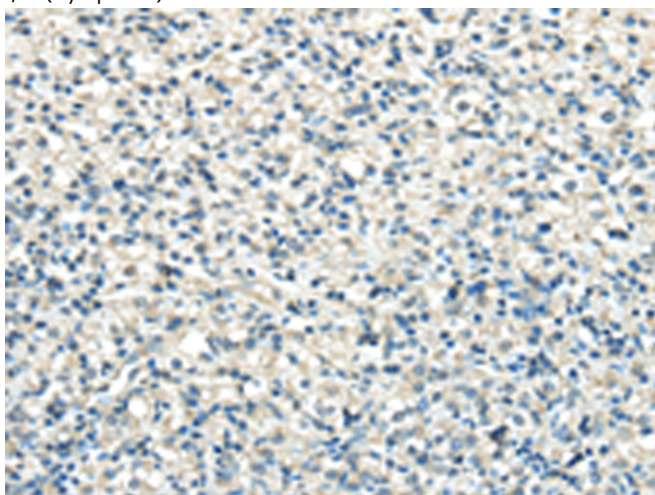
**储存和运输:** Store at -20°C. Avoid repeated freezing and thawing



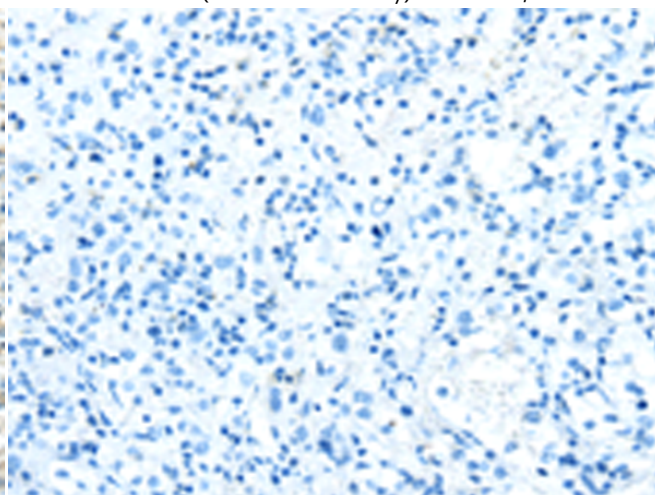
Immunohistochemistry analysis of paraffin embedded Human breast cancer tissue using 221109(VPS36 Antibody) at a dilution of 1/40(Cytoplasm).



In comparison with the IHC on the left, the same paraffin-embedded Human breast cancer tissue is first treated with the synthetic peptide and then with 221109(Anti-VPS36 Antibody) at dilution 1/40.



The image on the left is immunohistochemistry of paraffin-embedded Human prostate cancer tissue using 221109(Anti-VPS36 Antibody) at a dilution of 1/40.



In comparison with the IHC on the left, the same paraffin-embedded Human prostate cancer tissue is first treated with synthetic peptide and then with D262485(Anti-VPS36 Antibody) at dilution 1/40.



# Product Description

Pioneering GTPase and Oncogene Product Development since 2010

---