

VPS35 RABBIT PAB

货号: S221567

产品全名: VPS35 兔多抗

基因符号: MEM3; PARK17

UNIPROT ID: Q96QK1 (Gene Accession - NP_060676)

背景: This gene belongs to a group of vacuolar protein sorting (VPS) genes. The encoded protein is a component of a large multimeric complex, termed the retromer complex, involved in retrograde transport of proteins from endosomes to the trans-Golgi network. The close structural similarity between the yeast and human proteins that make up this complex suggests a similarity in function. Expression studies in yeast and mammalian cells indicate that this protein interacts directly with VPS35, which serves as the core of the retromer complex.

抗原: Synthetic peptide of human VPS35

经过测试的应用: ELISA, WB, IHC

推荐稀释比: IHC: 50-200;WB: 1000-5000;ELISA: 5000-10000

种属反应性: Rabbit

克隆性: Rabbit Polyclonal

亚型: Immunogen-specific rabbit IgG

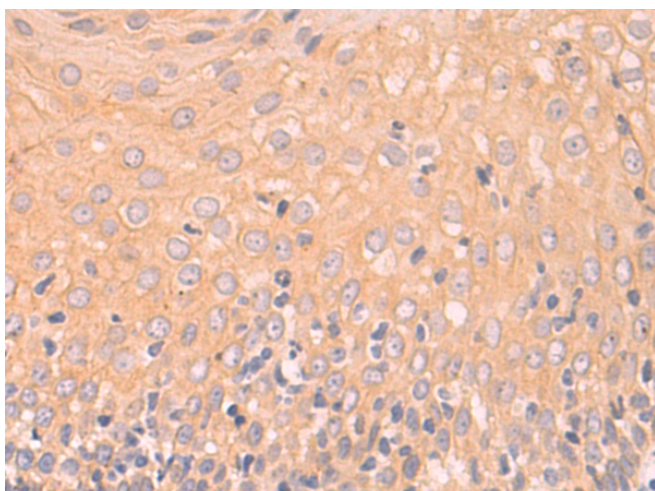
纯化: Antigen affinity purification

种属反应性: Human, Mouse

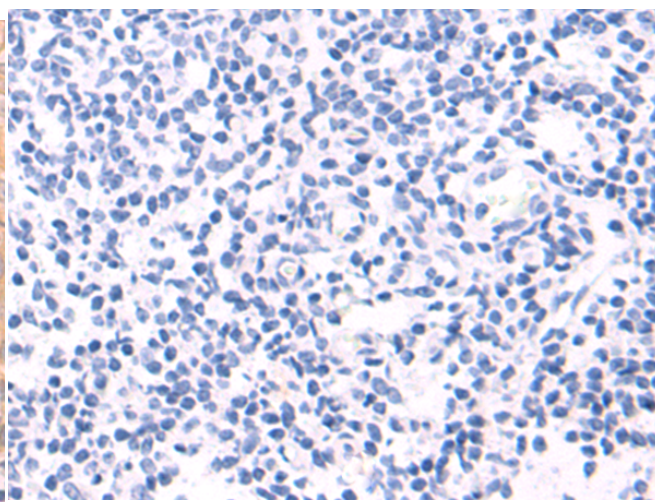
成分: PBS (without Mg²⁺ and Ca²⁺), pH 7.4, 150 mM NaCl, 0.05% Sodium Azide and 40% glycerol

研究领域: Signal Transduction

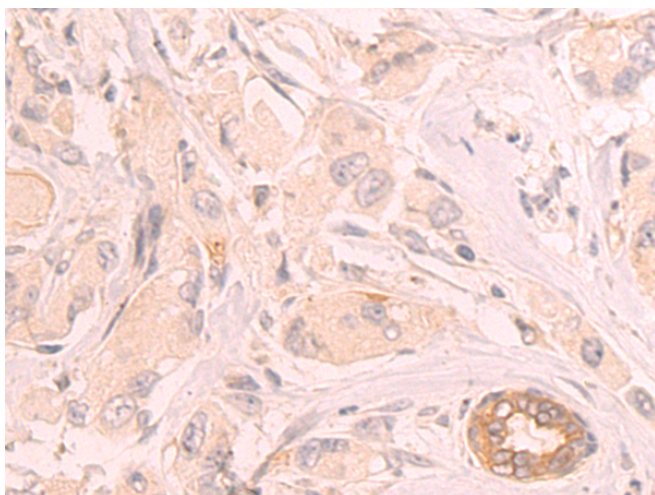
储存和运输: Store at -20°C. Avoid repeated freezing and thawing



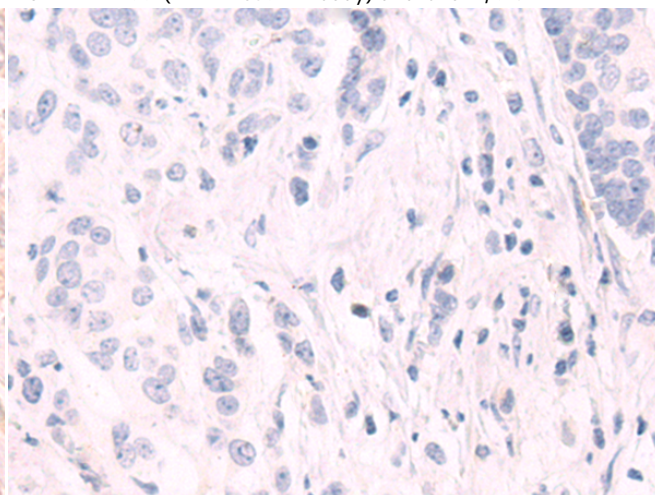
Immunohistochemistry analysis of paraffin embedded Human tonsil tissue using 221567(VPS35 Antibody) at a dilution of 1/50(Cytoplasm).



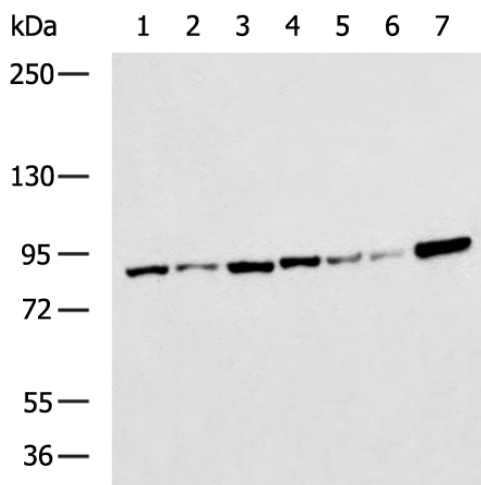
In comparison with the IHC on the left, the same paraffin-embedded Human tonsil tissue is first treated with the synthetic peptide and then with 221567(Anti-VPS35 Antibody) at dilution 1/50.



The image on the left is immunohistochemistry of paraffin-embedded Human breast cancer tissue using 221567(Anti-VPS35 Antibody) at a dilution of 1/50.



In comparison with the IHC on the left, the same paraffin-embedded Human breast cancer tissue is first treated with synthetic peptide and then with D263212(Anti-VPS35 Antibody) at dilution 1/50.



Gel: 6%SDS-PAGE, Lysate: 40 µg;
 Lane 1-7: K562, MCF-7, Raji, HepG2, Hela, A549, Mouse fetal brain tissue lysates;
 Primary antibody: 221567(VPS35 Antibody) at dilution 1/700;
 Secondary antibody: HRP-conjugated Goat anti rabbit IgG at 1/5000 dilution;
 Exposure time: 30 seconds



Product Description

Pioneering GTPase and Oncogene Product Development since 2010
