

VPS35 RABBIT MAB

货号: N263606

产品全名: VPS35 兔单克隆抗体

基因符号 hVPS35; MEM3; PARK17; VPS35

UNIPROT ID: Q96QK1

背景: Essential component of the retromer complex, a complex required to retrieve lysosomal enzyme receptors (IGF2R and M6PR) from endosomes to the trans-Golgi network. Also required to regulate transcytosis of the polymeric immunoglobulin receptor (pIgR-pIgA).

抗原: A synthetic peptide of human VPS35

经过测试的应用: WB,IHC-P

推荐稀释比: WB: 1/500-1/1000 IHC: 1/50-1/100

种属反应性: Rabbit

克隆性: Rabbit Monoclonal

克隆编号: R03-6E1

分子量: Calculated MW: 92 kDa; Observed MW: 81 kDa

亚型: IgG

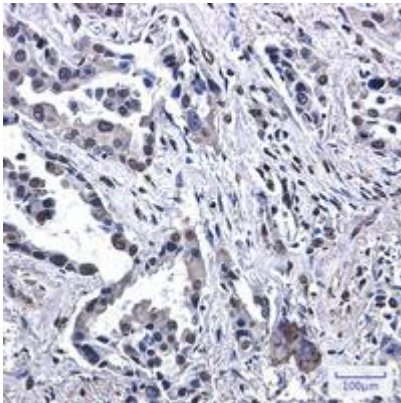
纯化: Affinity Purified

种属反应性: Human, Mouse and Rat

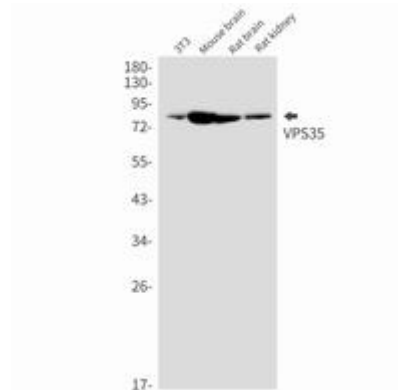
成分: PBS (without Mg²⁺ and Ca²⁺), pH 7.3 containing 50% glycerol, 0.5% BSA and 0.02% sodium azide

研究领域: Signal Transduction

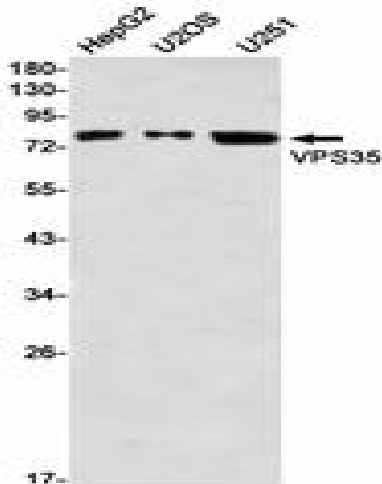
储存和运输: Store at -20°C. Avoid repeated freezing and thawing



Immunohistochemistry analysis of paraffin-embedded Human lung cancer using VPS35 antibody. High-pressure and temperature Sodium Citrate pH 6.0 was used for antigen retrieval.



Western blot analysis of VPS35 in 3T3, mouse brain, rat brain, rat kidney lysates using VPS35 antibody.



Western blot analysis of VPS35 in HepG2, U2OS, U251 lysates using VPS35 antibody.