

## VPREB1 RABBIT PAB

货号: S221566

产品全名: VPREB1 兔多抗

基因符号 IGI; IGVPB; VPREB; CD179a

**UNIPROT ID:** P12018 (Gene Accession - NP\_009059)

**背景:** The protein encoded by this gene belongs to the immunoglobulin superfamily and is expressed selectively at the early stages of B cell development, namely, in proB and early preB cells. This gene encodes the iota polypeptide chain that is associated with the Ig- $\mu$  chain to form a molecular complex which is expressed on the surface of pre-B cells. The complex is thought to regulate Ig gene rearrangements in the early steps of B-cell differentiation. Alternative splicing results in multiple transcript variants.

**抗原:** Synthetic peptide of human VPREB1

**经过测试的应用:** ELISA, IHC

**推荐稀释比:** IHC: 25-100; ELISA: 5000-10000

**种属反应性:** Rabbit

**克隆性:** Rabbit Polyclonal

**亚型:** Immunogen-specific rabbit IgG

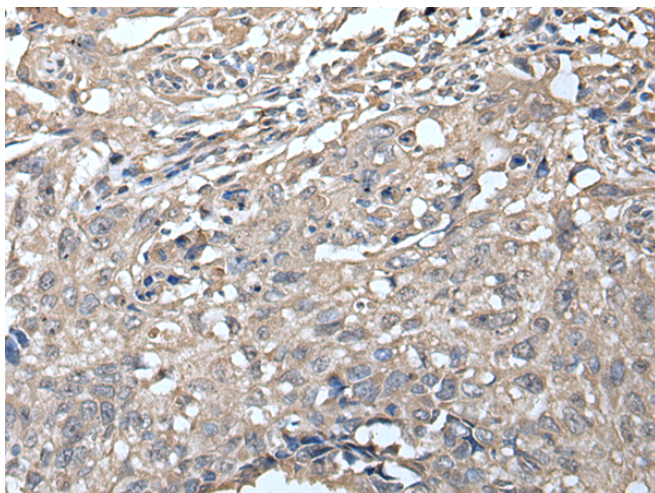
**纯化:** Antigen affinity purification

**种属反应性:** Human

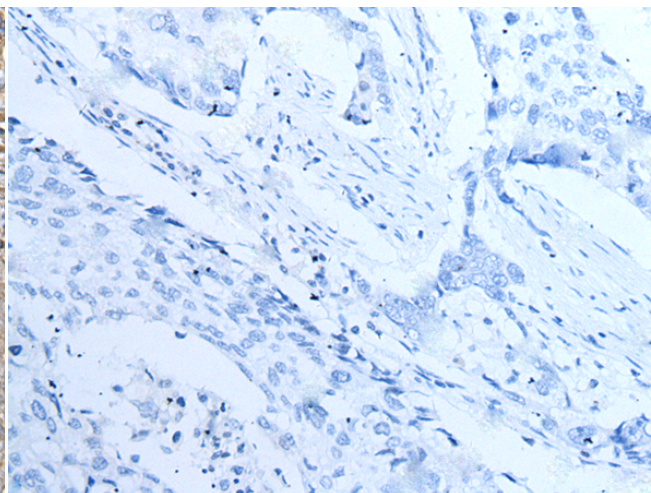
**成分:** PBS (without Mg<sup>2+</sup> and Ca<sup>2+</sup>), pH 7.4, 150 mM NaCl, 0.05% Sodium Azide and 40% glycerol

**研究领域:** Immunology, Stem Cells

**储存和运输:** Store at -20°C. Avoid repeated freezing and thawing



Immunohistochemistry analysis of paraffin embedded Human lung cancer tissue using 221566 (VPREB1 Antibody) at a dilution of 1/25 (Nucleus and Cell membrane).



In comparison with the IHC on the left, the same paraffin-embedded Human lung cancer tissue is first treated with the synthetic peptide and then with 221566 (Anti-VPREB1 Antibody) at dilution 1/25.