

VMP1 RABBIT PAB

货号: S221033

产品全名: VMP1 兔多抗

基因符号 EPG3; TANGO5; TMEM49

UNIPROT ID: Q96GC9 (Gene Accession - NP_112200)

背景: This gene encodes a transmembrane protein that plays a key regulatory role in the process of autophagy. The ectopic overexpression of the encoded protein in cultured cells triggers autophagy even under nutrient-rich conditions. This gene is overexpressed in pancreatitis affected acinar cells where the encoded protein mediates sequestration and degradation of potentially deleterious activated zymogen granules in a process termed, zymophagy.

抗原: Synthetic peptide of human VMP1

经过测试的应用: ELISA, WB, IHC

推荐稀释比: IHC: 50-200; WB: 500-2000; ELISA: 5000-10000

种属反应性: Rabbit

克隆性: Rabbit Polyclonal

亚型: Immunogen-specific rabbit IgG

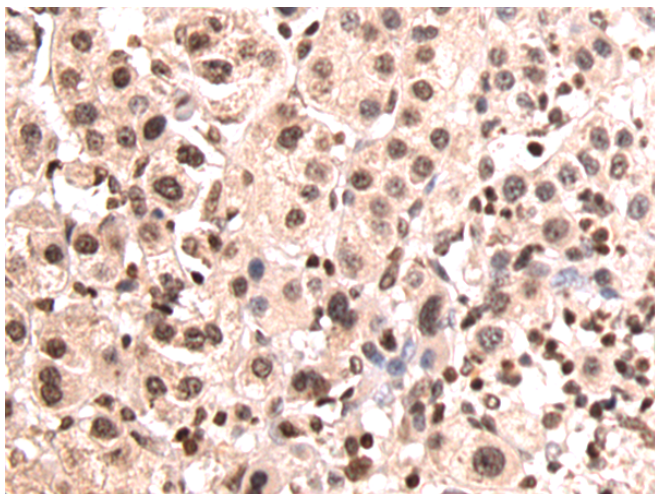
纯化: Antigen affinity purification

种属反应性: Human, Mouse, Rat

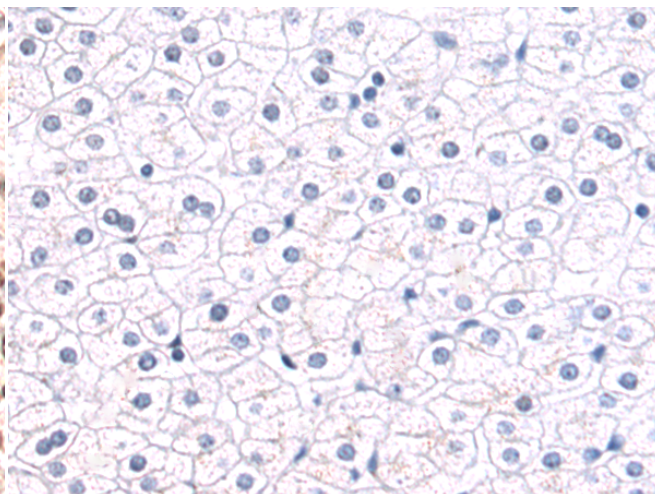
成分: PBS (without Mg²⁺ and Ca²⁺), pH 7.4, 150 mM NaCl, 0.05% Sodium Azide and 40% glycerol

研究领域: Cancer, Cardiovascular

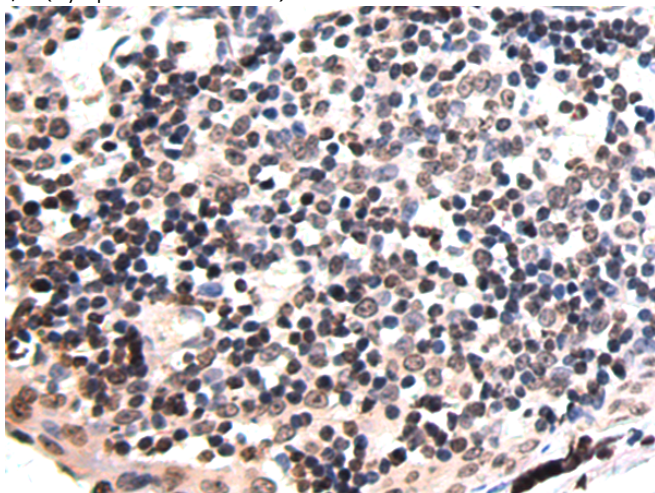
储存和运输: Store at -20°C. Avoid repeated freezing and thawing



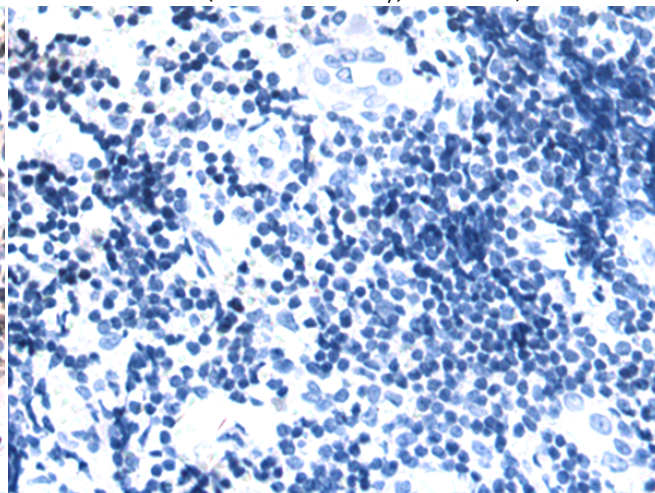
Immunohistochemistry analysis of paraffin embedded Human liver cancer tissue using 221033(VMP1 Antibody) at a dilution of 1/50(Cytoplasm and Nucleus).



In comparison with the IHC on the left, the same paraffin-embedded Human liver cancer tissue is first treated with the synthetic peptide and then with 221033(Anti-VMP1 Antibody) at dilution 1/50.

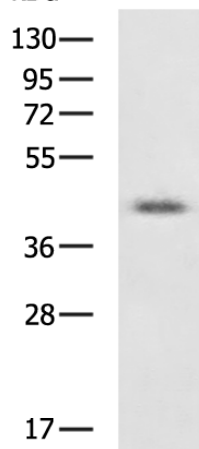


The image on the left is immunohistochemistry of paraffin-embedded Human tonsil tissue using 221033(Anti-VMP1 Antibody) at a dilution of 1/50.



In comparison with the IHC on the left, the same paraffin-embedded Human tonsil tissue is first treated with synthetic peptide and then with D262380(Anti-VMP1 Antibody) at dilution 1/50.

kDa



Gel: 8%SDS-PAGE, Lysate: 40 µg;
Lane: MCF7 cell lysate;
Primary antibody: 221033(VMP1 Antibody) at dilution 1/800;
Secondary antibody: HRP-conjugated Goat anti rabbit IgG at 1/5000 dilution;
Exposure time: 30 seconds

