

VMA21 RABBIT PAB

货号: S213291

产品全名: VMA21 兔多抗

基因符号: MEAX; XMEA

UNIPROT ID: Q3ZAQ7 (Gene Accession - NP_001017980)

背景: This gene encodes a chaperone for assembly of lysosomal vacuolar ATPase.

抗原: Synthetic peptide of human VMA21

经过测试的应用: ELISA, IHC, IF

推荐稀释比: IHC: 150-500; ELISA: 5000-240000

种属反应性: Rabbit

克隆性: Rabbit Polyclonal

亚型: Immunogen-specific rabbit IgG

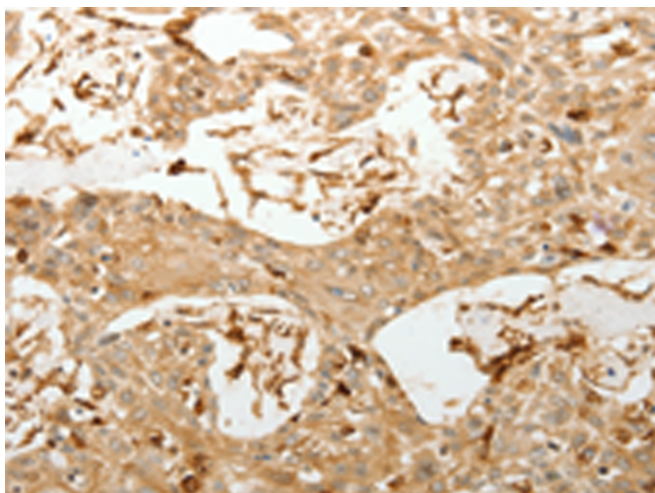
纯化: Antigen affinity purification

种属反应性: Human, Mouse

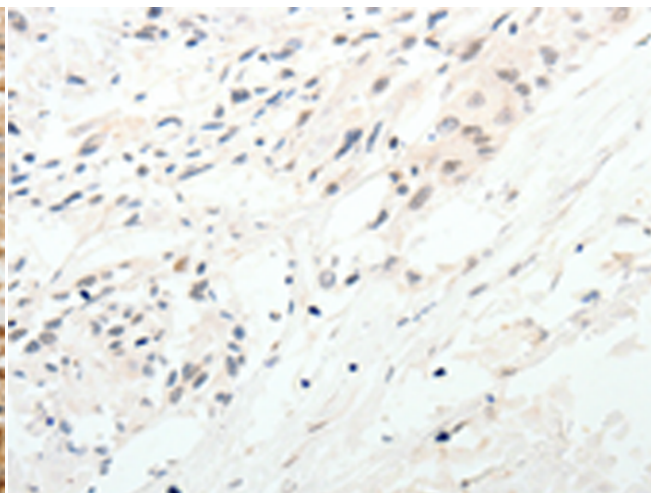
成分: PBS (without Mg²⁺ and Ca²⁺), pH 7.4, 150 mM NaCl, 0.05% Sodium Azide and 40% glycerol

研究领域: Signal Transduction, Cell Biology

储存和运输: Store at -20°C. Avoid repeated freezing and thawing



Immunohistochemistry analysis of paraffin embedded Human esophagus cancer tissue using 213291(VMA21 Antibody) at a dilution of 1/150(Cytoplasm).



In comparison with the IHC on the left, the same paraffin-embedded Human esophagus cancer tissue is first treated with the synthetic peptide and then with 213291(Anti-VMA21 Antibody) at dilution 1/150.