

## VEGFC RABBIT PAB

货号: S213285

产品全名: VEGFC 兔多抗

基因符号 VRP; Flt4-L; LMPH1D; LMPHM4

**UNIPROT ID:** P49767 (Gene Accession - NP\_005420)

**背景:** The protein encoded by this gene is a member of the platelet-derived growth factor/vascular endothelial growth factor (PDGF/VEGF) family. The encoded protein promotes angiogenesis and endothelial cell growth, and can also affect the permeability of blood vessels. The proprotein is further cleaved into a fully processed form that can bind and activate VEGFR-2 and VEGFR-3 receptors.

**抗原:** Synthetic peptide of human VEGFC

**经过测试的应用:** ELISA, WB, IHC

**推荐稀释比:** IHC: Oct-50;WB: 500-2000;ELISA: 1000-10000

**种属反应性:** Rabbit

**克隆性:** Rabbit Polyclonal

**亚型:** Immunogen-specific rabbit IgG

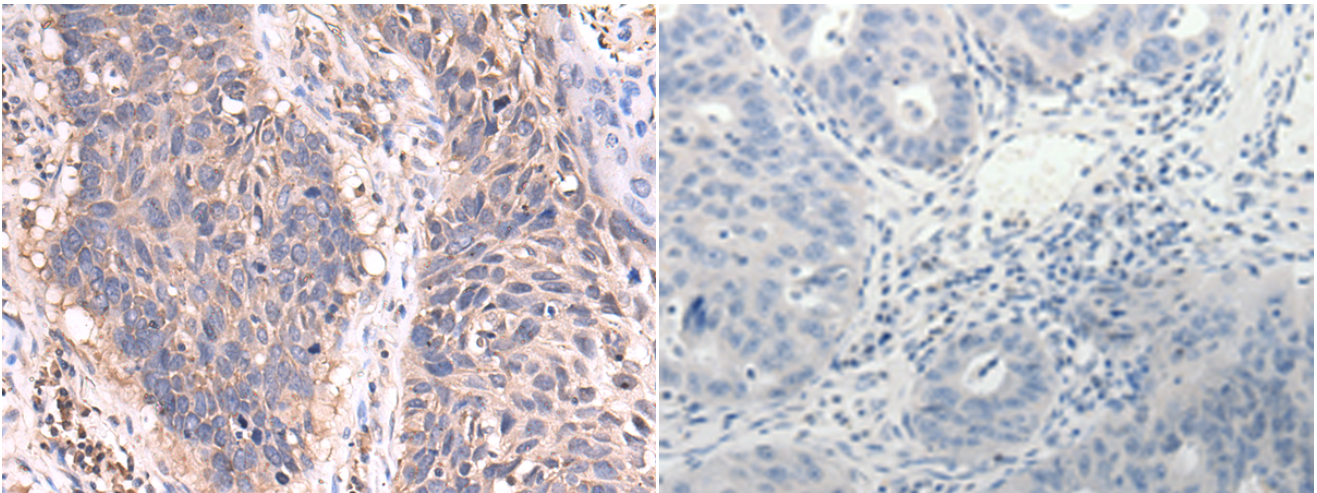
**纯化:** Antigen affinity purification

**种属反应性:** Human

**成分:** PBS (without Mg<sup>2+</sup> and Ca<sup>2+</sup>), pH 7.4, 150 mM NaCl, 0.05% Sodium Azide and 40% glycerol

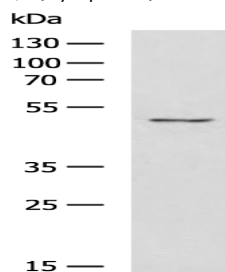
**研究领域:** Signal Transduction, Cardiovascular, Cancer, Neuroscience

**储存和运输:** Store at -20°C. Avoid repeated freezing and thawing



Immunohistochemistry analysis of paraffin embedded Human ovarian cancer tissue using 213285(VEGFC Antibody) at a dilution of 1/5(Cytoplasm).

In comparison with the IHC on the left, the same paraffin-embedded Human ovarian cancer tissue is first treated with the synthetic peptide and then with 213285(Anti-VEGFC Antibody) at dilution 1/5.



Gel: 8%SDS-PAGE, Lysate: 40 µg;

Lane: 231 cell lysate;

Primary antibody: 213285(VEGFC Antibody) at dilution 1/400;

Secondary antibody: HRP-conjugated Goat anti rabbit IgG at 1/5000 dilution;

Exposure time: 20 seconds