

## VDAC1 RABBIT PAB

货号: S218290

产品全名: VDAC1 兔多抗

基因符号: PORIN; VDAC-1

**UNIPROT ID:** P21796 (Gene Accession - BC008482)

**背景:** This gene encodes a voltage-dependent anion channel protein that is a major component of the outer mitochondrial membrane. The encoded protein facilitates the exchange of metabolites and ions across the outer mitochondrial membrane and may regulate mitochondrial functions. This protein also forms channels in the plasma membrane and may be involved in transmembrane electron transport. Alternate splicing results in multiple transcript variants. Multiple pseudogenes of this gene are found on chromosomes 1, 2, 3, 6, 9, 12, X and Y.

**抗原:** Fusion protein of human VDAC1

**经过测试的应用:** ELISA, WB, IHC

**推荐稀释比:** IHC: 200-400;WB: 500-2000;ELISA: 5000-10000

**种属反应性:** Rabbit

**克隆性:** Rabbit Polyclonal

**亚型:** Immunogen-specific rabbit IgG

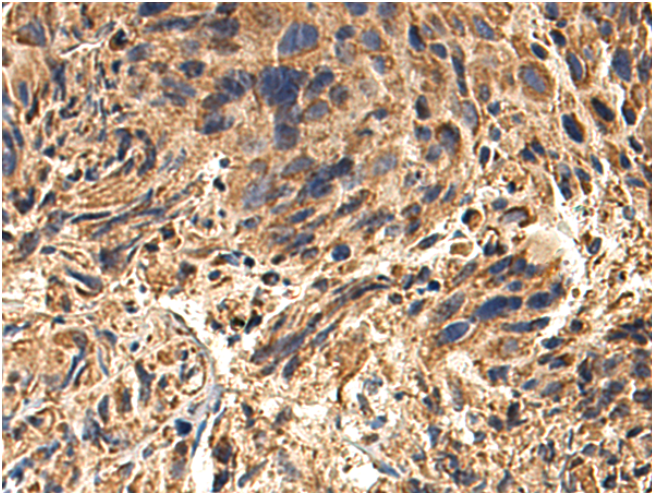
**纯化:** Antigen affinity purification

**种属反应性:** Human, Mouse, Rat

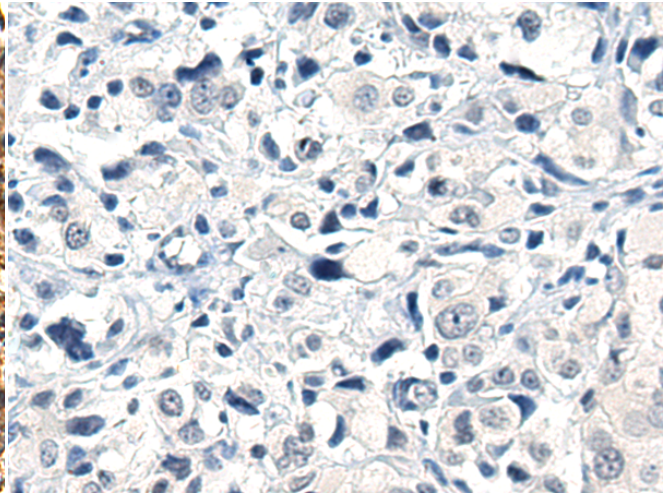
**成分:** PBS (without Mg<sup>2+</sup> and Ca<sup>2+</sup>), pH 7.4, 150 mM NaCl, 0.05% Sodium Azide and 40% glycerol

**研究领域:** Metabolism

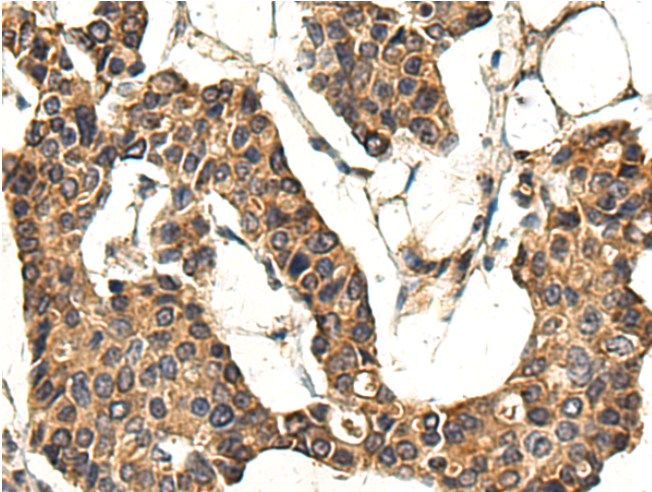
**储存和运输:** Store at -20°C. Avoid repeated freezing and thawing



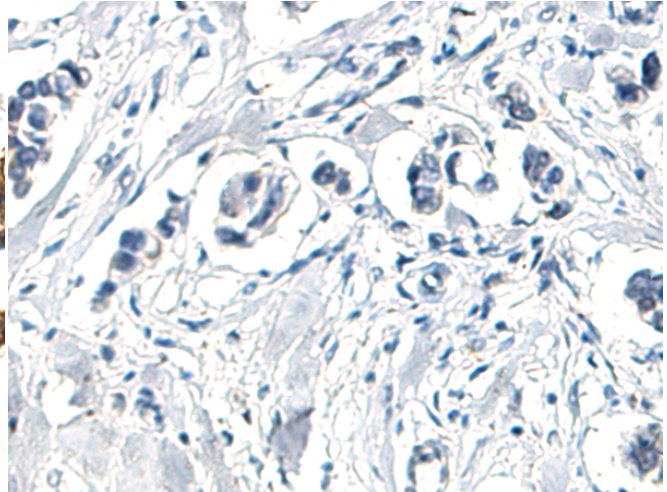
Immunohistochemistry analysis of paraffin embedded Human prostate cancer tissue using 218290(VDAC1 Antibody) at a dilution of 1/160(Cytoplasm).



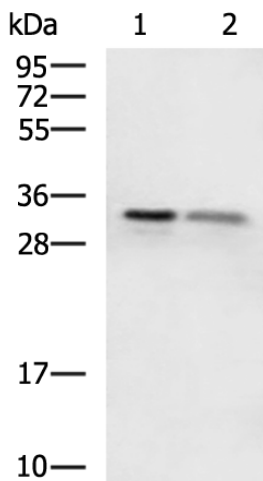
In comparison with the IHC on the left, the same paraffin-embedded Human prostate cancer tissue is first treated with the fusion protein and then with 218290(Anti-VDAC1 Antibody) at dilution 1/160.



The image on the left is immunohistochemistry of paraffin-embedded Human breast cancer tissue using 218290(Anti-VDAC1 Antibody) at a dilution of 1/160.



In comparison with the IHC on the left, the same paraffin-embedded Human breast cancer tissue is first treated with fusion protein and then with D224100(Anti-VDAC1 Antibody) at dilution 1/160.



Gel: 12%SDS-PAGE, Lysate: 40 µg;  
Lane 1-2: 293T and Jurkat cell lysates;  
Primary antibody: 218290(VDAC1 Antibody) at dilution 1/1150;  
Secondary antibody: HRP-conjugated Goat anti rabbit IgG at 1/5000 dilution;  
Exposure time: 10 seconds



# Product Description

Pioneering GTPase and Oncogene Product Development since 2010

---