

VANGL2 RABBIT PAB

货号: S220254

产品全名: VANGL2 兔多抗

基因符号 LPP1; LTAP; STBI; STBM; STBM1

UNIPROT ID: Q9ULK5 (Gene Accession - NP_065068)

背景: The protein encoded by this gene is a membrane protein involved in the regulation of planar cell polarity, especially in the stereociliary bundles of the cochlea. The encoded protein transmits directional signals to individual cells or groups of cells in epithelial sheets. This protein is also involved in the development of the neural plate.

抗原: Synthetic peptide of human VANGL2

经过测试的应用: ELISA, WB, IHC

推荐稀释比: IHC: 15-50;WB: 200-1000;ELISA: 1000-2000

种属反应性: Rabbit

克隆性: Rabbit Polyclonal

亚型: Immunogen-specific rabbit IgG

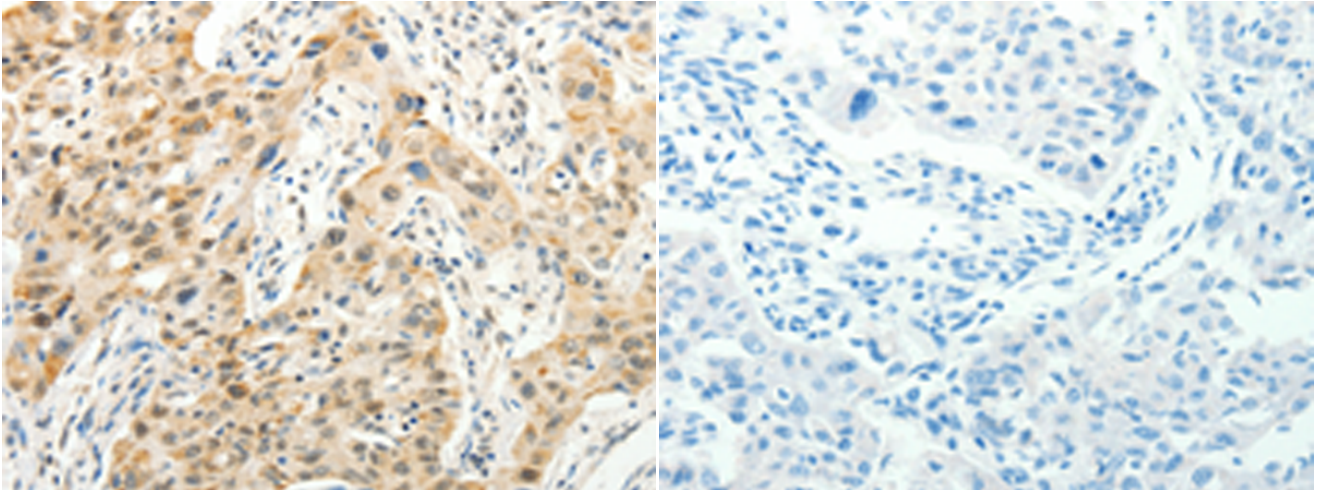
纯化: Antigen affinity purification

种属反应性: Human, Mouse, Rat

成分: PBS (without Mg²⁺ and Ca²⁺), pH 7.4, 150 mM NaCl, 0.05% Sodium Azide and 40% glycerol

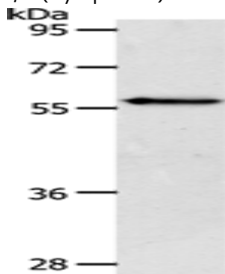
研究领域: Neuroscience, Cardiovascular, Signal Transduction

储存和运输: Store at -20°C. Avoid repeated freezing and thawing



Immunohistochemistry analysis of paraffin embedded Human lung cancer tissue using 220254(VANGL2 Antibody) at a dilution of 1/15(Cytoplasm).

In comparison with the IHC on the left, the same paraffin-embedded Human lung cancer tissue is first treated with the synthetic peptide and then with 220254(Anti-VANGL2 Antibody) at dilution 1/15.



Gel: 10%SDS-PAGE, Lysate: 40 µg;

Lane: NIH/3T3 cells;

Primary antibody: 220254(VANGL2 Antibody) at dilution 1/250;

Secondary antibody: Goat anti rabbit IgG at 1/8000 dilution;

Exposure time: 2 seconds