

USE1 RABBIT PAB

货号: S218152

产品全名: USE1 兔多抗

基因符号: D12; P31; SLT1; MDS032

UNIPROT ID: Q9NZ43 (Gene Accession - BC006005)

背景: SNARE that may be involved in targeting and fusion of Golgi-derived retrograde transport vesicles with the ER.

抗原: Full length fusion 蛋白

经过测试的应用: ELISA, WB, IHC

推荐稀释比: IHC: 25-100;WB: 200-1000;ELISA: 5000-10000

种属反应性: Rabbit

克隆性: Rabbit Polyclonal

亚型: Immunogen-specific rabbit IgG

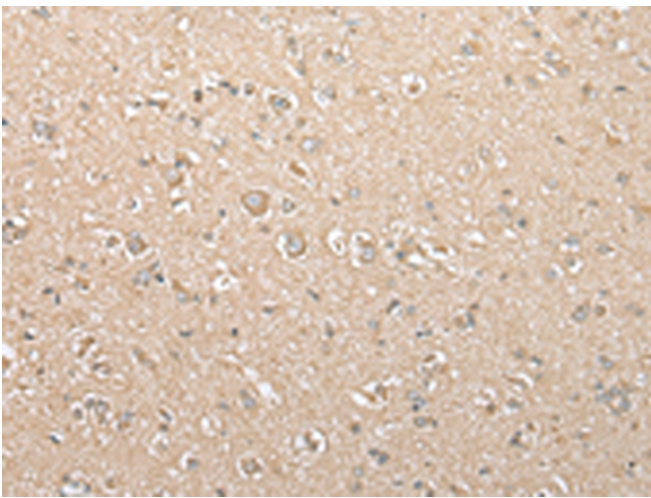
纯化: Antigen affinity purification

种属反应性: Human, Mouse

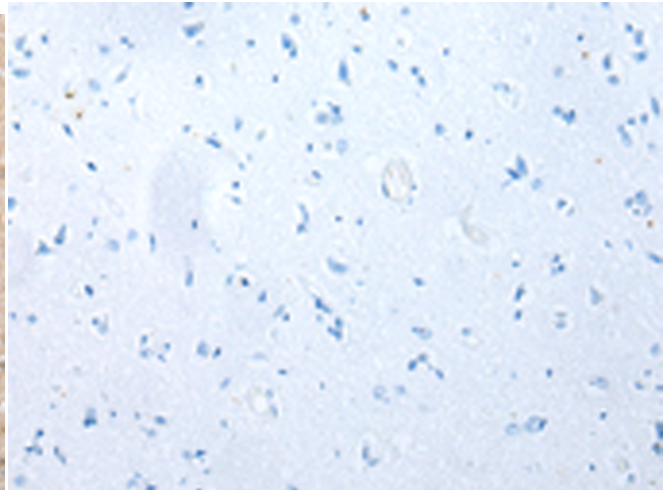
成分: PBS (without Mg²⁺ and Ca²⁺), pH 7.4, 150 mM NaCl, 0.05% Sodium Azide and 40% glycerol

研究领域: Signal Transduction

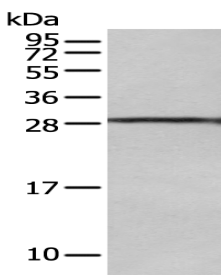
储存和运输: Store at -20°C. Avoid repeated freezing and thawing



Immunohistochemistry analysis of paraffin embedded Human brain tissue using 218152(USE1 Antibody) at a dilution of 1/25(Cytoplasm).



In comparison with the IHC on the left, the same paraffin-embedded Human brain tissue is first treated with the fusion protein and then with 218152(Anti-USE1 Antibody) at dilution 1/25.



Gel: 12%SDS-PAGE, Lysate: 40 µg;

Lane: 293T cell;

Primary antibody: 218152(USE1 Antibody) at dilution 1/250;

Secondary antibody: Goat anti rabbit IgG at 1/8000 dilution;

Exposure time: 10 seconds