

URI1 RABBIT PAB

货号: S221646

产品全名: URI1 兔多抗

基因符号: RMP; URI; NNX3; C19orf2; PPP1R19

UNIPROT ID: O94763 (Gene Accession - NP_003787)

背景: This gene encodes member of the prefoldin family of molecular chaperones. The encoded protein functions as a scaffolding protein and plays roles in ubiquitination and transcription, in part through interactions with the RNA polymerase II subunit RPB5. This gene may play a role in multiple malignancies including ovarian cancer and hepatocellular carcinoma. Alternatively spliced transcript variants encoding multiple isoforms have been observed for this gene, and a pseudogene of this gene is located on the long arm of chromosome 22.

抗原: Synthetic peptide of human URI1

经过测试的应用: ELISA, WB, IHC

推荐稀释比: IHC: 30-150;WB: 500-2000;ELISA: 5000-10000

种属反应性: Rabbit

克隆性: Rabbit Polyclonal

亚型: Immunogen-specific rabbit IgG

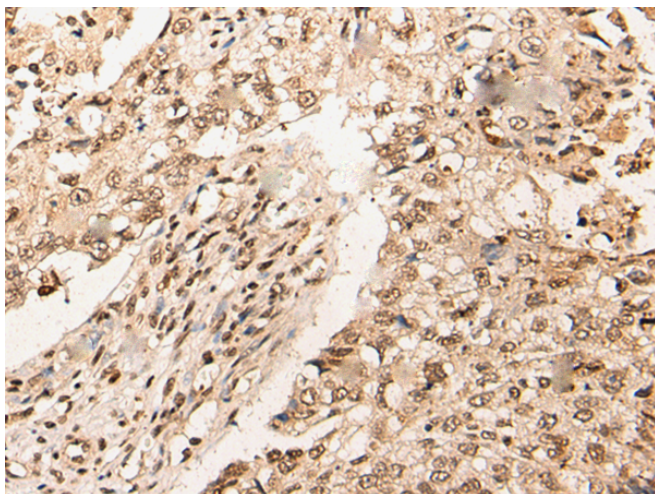
纯化: Antigen affinity purification

种属反应性: Human, Mouse

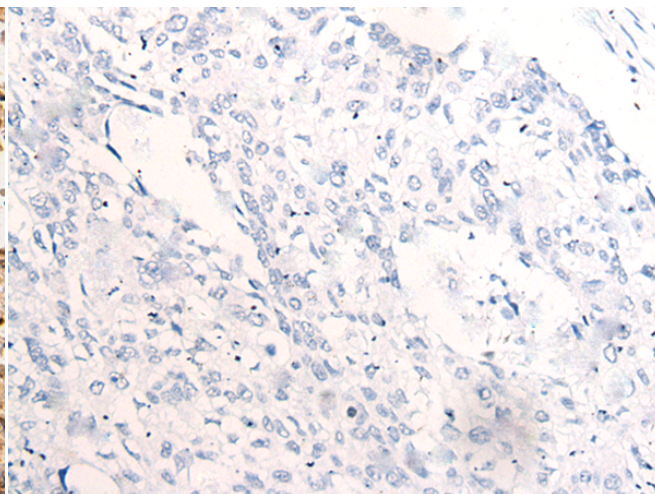
成分: PBS (without Mg²⁺ and Ca²⁺), pH 7.4, 150 mM NaCl, 0.05% Sodium Azide and 40% glycerol

研究领域: Epigenetics and Nuclear Signaling

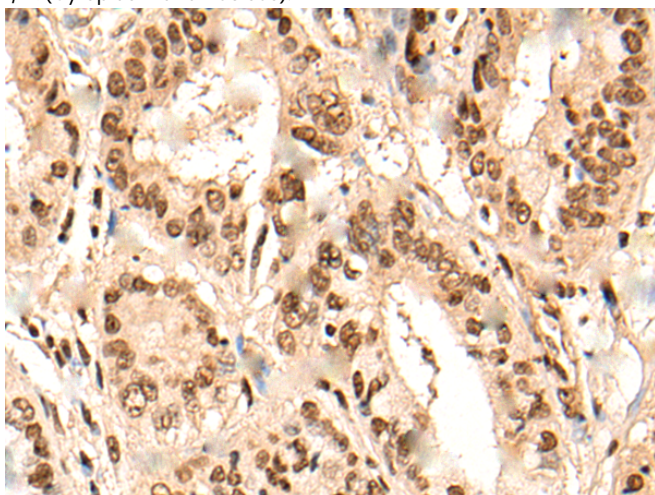
储存和运输: Store at -20°C. Avoid repeated freezing and thawing



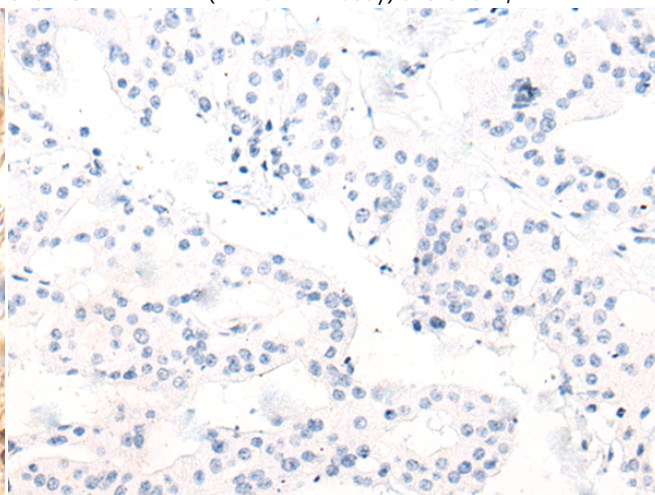
Immunohistochemistry analysis of paraffin embedded Human lung cancer tissue using 221646 (URII Antibody) at a dilution of 1/45 (Cytoplasm and Nucleus).



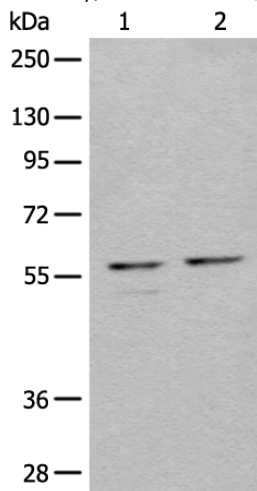
In comparison with the IHC on the left, the same paraffin-embedded Human lung cancer tissue is first treated with the synthetic peptide and then with 221646 (Anti-URII Antibody) at dilution 1/45.



The image on the left is immunohistochemistry of paraffin-embedded Human liver cancer tissue using 221646 (Anti-URII Antibody) at a dilution of 1/45.



In comparison with the IHC on the left, the same paraffin-embedded Human liver cancer tissue is first treated with synthetic peptide and then with D263335 (Anti-URII Antibody) at dilution 1/45.



Gel: 8% SDS-PAGE, Lysate: 40 µg;
 Lane 1-2: K562 and 293T cell lysates;
 Primary antibody: 221646 (URII Antibody) at dilution 1/450;
 Secondary antibody: Goat anti rabbit IgG at 1/8000 dilution;
 Exposure time: 50 seconds



Product Description

Pioneering GTPase and Oncogene Product Development since 2010
