

## UQCC2 RABBIT PAB

货号: S212500

产品全名: UQCC2 兔多抗

基因符号: M19; Cbp6; MNF1; C6orf125; C6orf126; bA6B20.2

**UNIPROT ID:** Q9BRT2 (Gene Accession - BC006007)

**背景:** This gene encodes a nucleoid protein localized to the mitochondria inner membrane. The encoded protein affects regulation of insulin secretion, mitochondrial ATP production, and myogenesis through modulation of mitochondrial respiratory chain activity.

**抗原:** Fusion protein of human UQCC2

**经过测试的应用:** ELISA, IHC

**推荐稀释比:** IHC: 40-200; ELISA: 5000-10000

**种属反应性:** Rabbit

**克隆性:** Rabbit Polyclonal

**亚型:** Immunogen-specific rabbit IgG

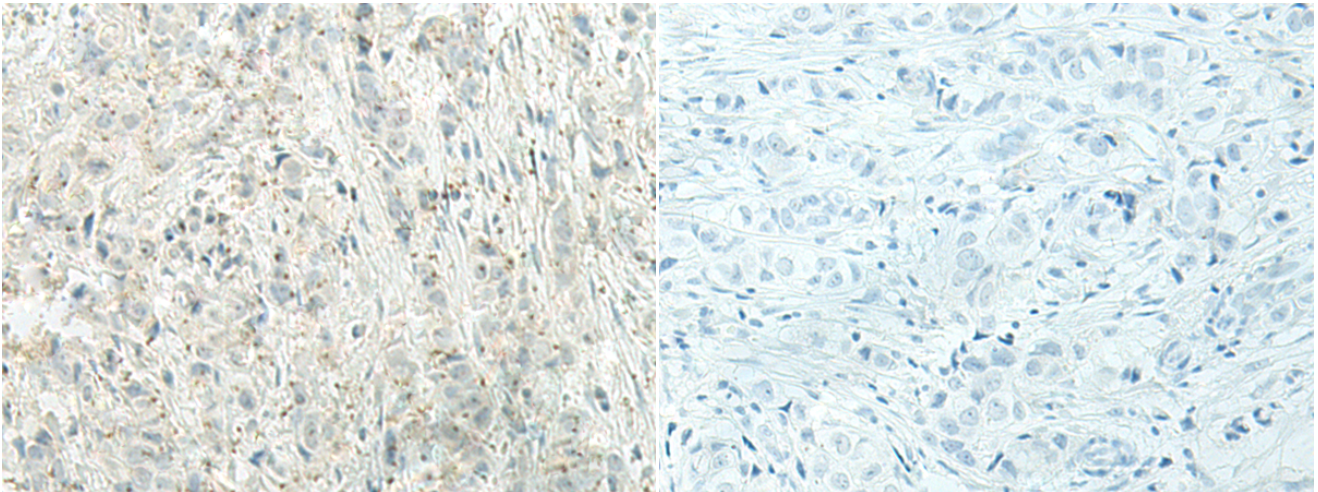
**纯化:** Antigen affinity purification

**种属反应性:** Human, Mouse, Rat

**成分:** PBS (without Mg<sup>2+</sup> and Ca<sup>2+</sup>), pH 7.4, 150 mM NaCl, 0.05% Sodium Azide and 40% glycerol

**研究领域:** Metabolism

**储存和运输:** Store at -20°C. Avoid repeated freezing and thawing



Immunohistochemistry analysis of paraffin embedded Human breast cancer tissue using 212500(UQCC2 Antibody) at a dilution of 1/60(Cytoplasm).

In comparison with the IHC on the left, the same paraffin-embedded Human breast cancer tissue is first treated with the fusion protein and then with 212500(Anti-UQCC2 Antibody) at dilution 1/60.