

## UHRF1BP1 RABBIT PAB

货号: S221085

产品全名: UHRF1BP1 兔多抗

基因符号: ICBP90; C6orf107; dJ349A12.1

**UNIPROT ID:** Q6BDS2 (Gene Accession - NP\_060224 )

**背景:** UHRF1BP1 (UHRF1 binding protein 1) is a 1,440 amino acid protein that interacts with UHRF1 and may act as a negative regulator of cell growth. The UHRF1BP1 protein has been identified as a possible risk loci for systemic lupus erythematosus. The UHRF1BP1 gene is conserved in chimpanzee, dog, cow, mouse, rat, chicken, zebrafish and C.elegans, and maps to human chromosome 6p21.31.

**抗原:** Synthetic peptide of human UHRF1BP1

**经过测试的应用:** ELISA, IHC

**推荐稀释比:** IHC: 25-100; ELISA: 2000-5000

**种属反应性:** Rabbit

**克隆性:** Rabbit Polyclonal

**亚型:** Immunogen-specific rabbit IgG

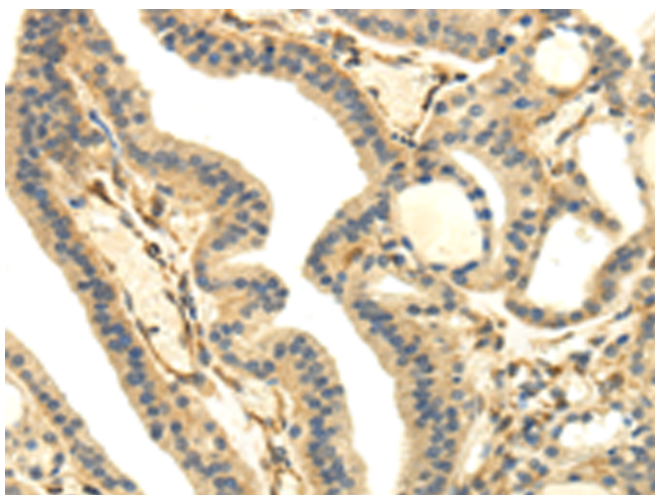
**纯化:** Antigen affinity purification

**种属反应性:** Human

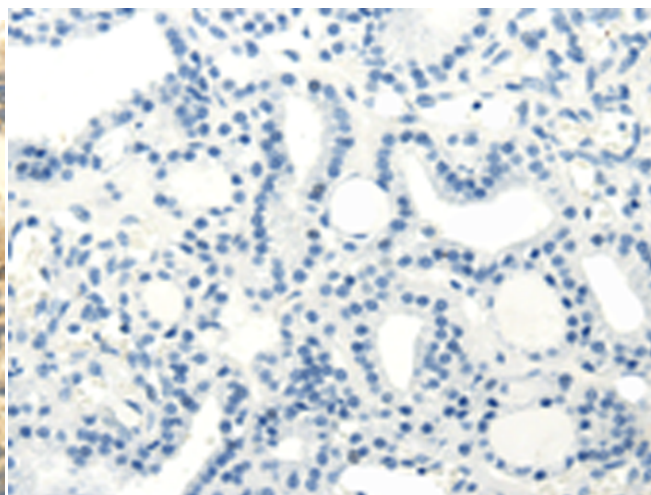
**成分:** PBS (without Mg<sup>2+</sup> and Ca<sup>2+</sup>), pH 7.4, 150 mM NaCl, 0.05% Sodium Azide and 40% glycerol

**研究领域:** Epigenetics and Nuclear Signaling

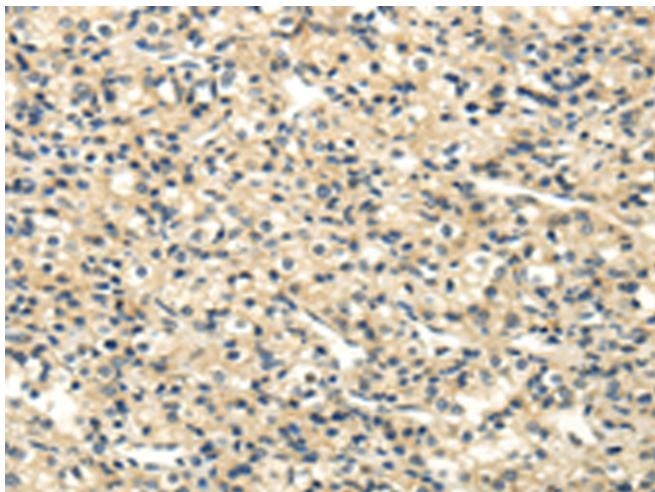
**储存和运输:** Store at -20°C. Avoid repeated freezing and thawing



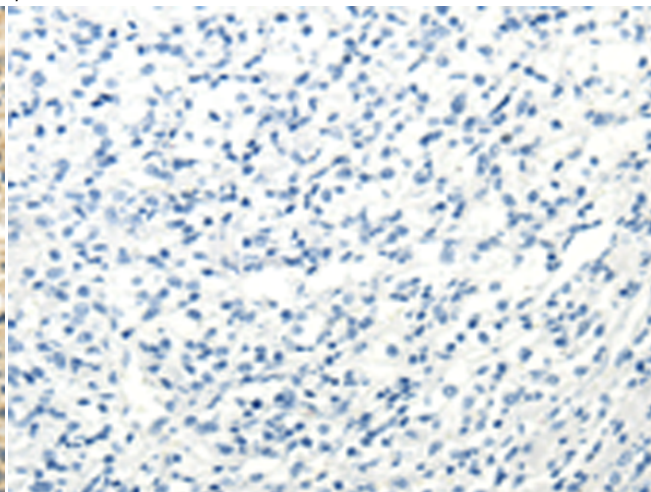
Immunohistochemistry analysis of paraffin embedded Human thyroid cancer tissue using 221085(UHRF1BP1 Antibody) at a dilution of 1/35(Cytoplasm).



In comparison with the IHC on the left, the same paraffin-embedded Human thyroid cancer tissue is first treated with the synthetic peptide and then with 221085(Anti-UHRF1BP1 Antibody) at dilution 1/35.



The image on the left is immunohistochemistry of paraffin-embedded Human prostate cancer tissue using 221085(Anti-UHRF1BP1 Antibody) at a dilution of 1/35.



In comparison with the IHC on the left, the same paraffin-embedded Human prostate cancer tissue is first treated with synthetic peptide and then with D262455(Anti-UHRF1BP1 Antibody) at dilution 1/35.



# Product Description

Pioneering GTPase and Oncogene Product Development since 2010

---