

## UGGT1 RABBIT PAB

货号: S221582

产品全名: UGGT1 兔多抗

基因符号: UGT1; HUGT1; UGCGL1

**UNIPROT ID:** Q9NYU2 (Gene Accession - NP\_064505)

背景: UDP-glucose:glycoprotein glucosyltransferase (UGT) is a soluble protein of the endoplasmic reticulum (ER) that selectively reglucosylates unfolded glycoproteins, thus providing quality control for protein transport out of the ER.

抗原: Synthetic peptide of human UGGT1

经过测试的应用: ELISA, WB, IHC

推荐稀释比: IHC: 20-100;WB: 200-1000;ELISA: 5000-10000

种属反应性: Rabbit

克隆性: Rabbit Polyclonal

亚型: Immunogen-specific rabbit IgG

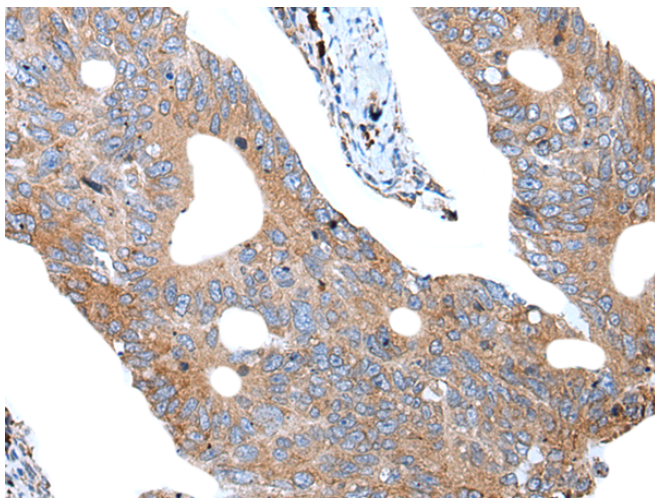
纯化: Antigen affinity purification

种属反应性: Human

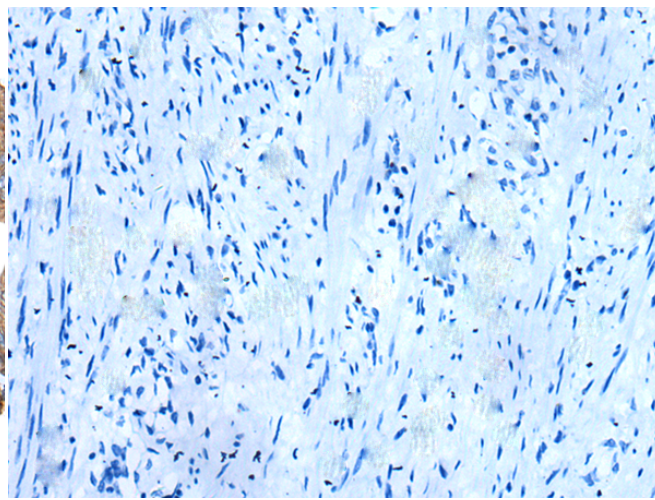
成分: PBS (without Mg<sup>2+</sup> and Ca<sup>2+</sup>), pH 7.4, 150 mM NaCl, 0.05% Sodium Azide and 40% glycerol

研究领域: Signal Transduction

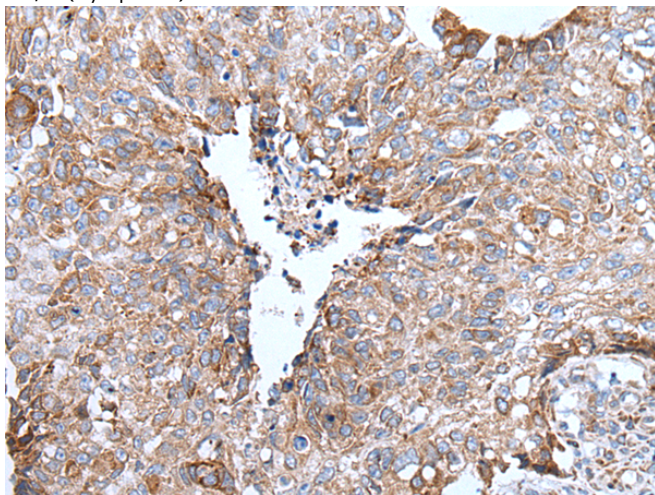
储存和运输: Store at -20°C. Avoid repeated freezing and thawing



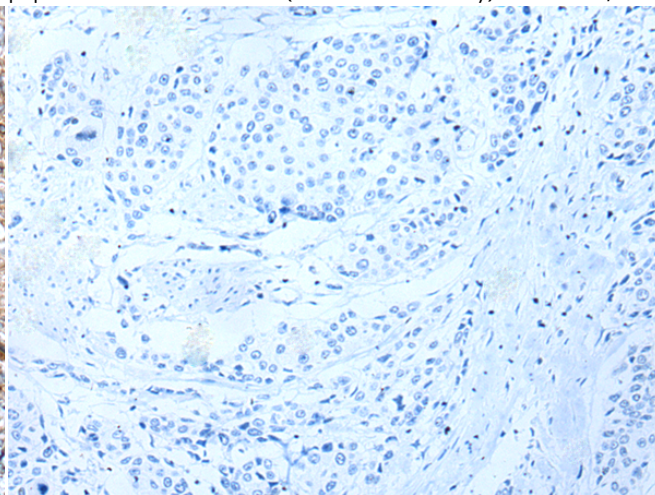
Immunohistochemistry analysis of paraffin embedded Human colorectal cancer tissue using 221582(UGGT1 Antibody) at a dilution of 1/20(Cytoplasm).



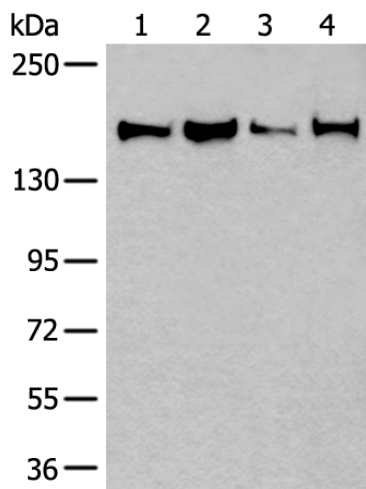
In comparison with the IHC on the left, the same paraffin-embedded Human colorectal cancer tissue is first treated with the synthetic peptide and then with 221582(Anti-UGGT1 Antibody) at dilution 1/20.



The image on the left is immunohistochemistry of paraffin-embedded Human lung cancer tissue using 221582(Anti-UGGT1 Antibody) at a dilution of 1/20.



In comparison with the IHC on the left, the same paraffin-embedded Human lung cancer tissue is first treated with synthetic peptide and then with D263230(Anti-UGGT1 Antibody) at dilution 1/20.



Gel: 6%SDS-PAGE, Lysate: 40 µg;  
 Lane 1-4: 231, A172, Jurkat and HEPG2 cell lysates;  
 Primary antibody: 221582(UGGT1 Antibody) at dilution 1/200;  
 Secondary antibody: Goat anti rabbit IgG at 1/8000 dilution;  
 Exposure time: 1 minute



# Product Description

Pioneering GTPase and Oncogene Product Development since 2010

---