

## UFM1 RABBIT MAB

货号: N261554

产品全名: UFM1 兔单克隆抗体

基因符号 Ubiquitin-fold modifier 1; C13orf20

**UNIPROT ID:** P61960

背景: Ubiquitin-like modifier which can be covalently attached via an isopeptide bond to lysine residues of substrate proteins as a monomer or a lysine-linked polymer.

抗原: A synthetic peptide of human UFM1

经过测试的应用: WB,IHC-P,IP

推荐稀释比: WB: 1/500-1/1000 IHC: 1/50-1/100 IP: 1/20

种属反应性: Rabbit

克隆性: Rabbit Monoclonal

克隆编号: R02-5G1

分子量: Calculated MW: 9 kDa; Observed MW: 9 kDa

亚型: IgG

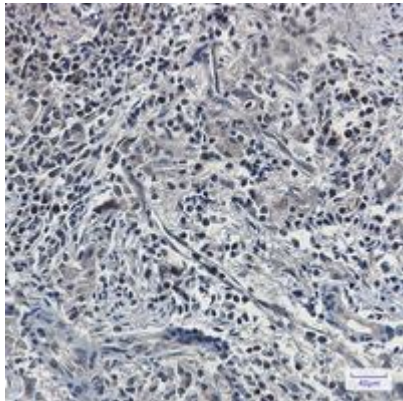
纯化: Affinity Purified

种属反应性: Human,Mouse

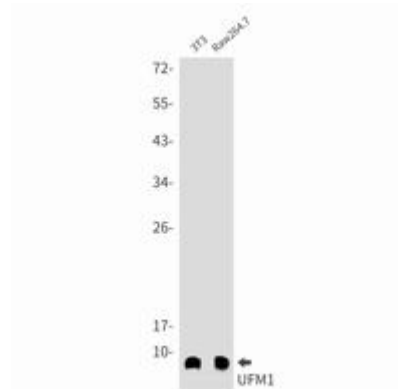
成分: PBS (without Mg<sup>2+</sup> and Ca<sup>2+</sup>), pH 7.3 containing 50% glycerol, 0.5% BSA and 0.02% sodium azide

研究领域: Cell Biology

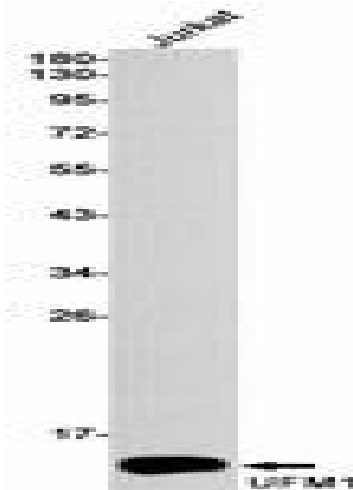
储存和运输: Store at -20°C. Avoid repeated freezing and thawing



Immunohistochemistry analysis of paraffin-embedded Human lung cancer using UFM1 antibody. High-pressure and temperature Sodium Citrate pH 6.0 was used for antigen retrieval.



Western blot analysis of UFM1 in 3T3, Raw264.7 lysates using UFM1 antibody.



Western blot analysis of UFM1 in Jurkat lysates using UFM1 antibody.