

## UCN3 RABBIT PAB

货号: S221798

产品全名: UCN3 兔多抗

基因符号 SCP; SPC; UCNIII

**UNIPROT ID:** Q969E3 (Gene Accession - NP\_444277)

**背景:** This gene encodes a member of the sauvagine/corticotropin-releasing factor/urotensin I family of proteins. The encoded preproprotein is proteolytically processed to generate the mature peptide hormone, which is secreted by pancreatic beta and alpha cells. This hormone is an endogenous ligand for corticotropin-releasing factor receptor 2 and may regulate insulin secretion in response to plasma glucose levels. Patients with type 2 diabetes exhibit reduced levels of the encoded protein in beta cells. In the brain, the encoded protein may be responsible for the effects of stress on appetite.

**抗原:** Synthetic peptide of human UCN3

**经过测试的应用:** ELISA, WB, IHC

**推荐稀释比:** IHC: 20-100;WB: 200-1000;ELISA: 5000-10000

**种属反应性:** Rabbit

**克隆性:** Rabbit Polyclonal

**亚型:** Immunogen-specific rabbit IgG

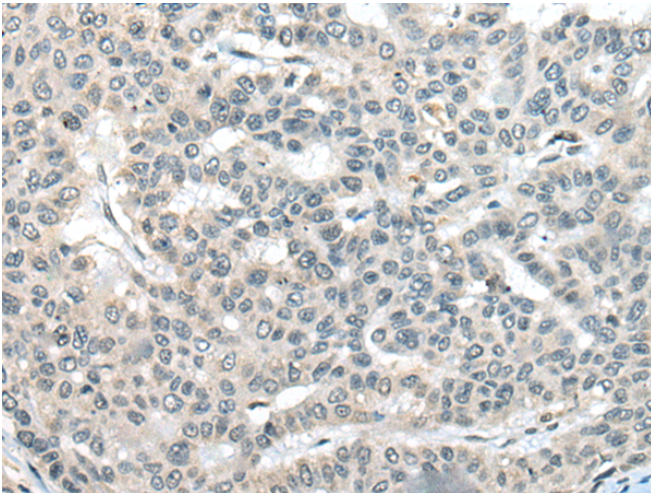
**纯化:** Antigen affinity purification

**种属反应性:** Human

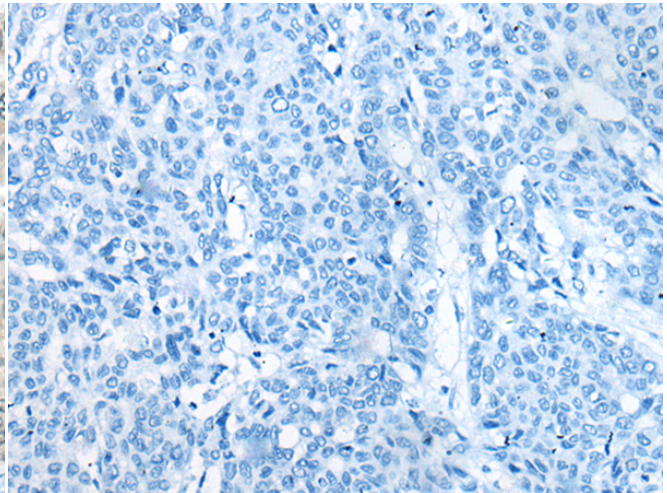
**成分:** PBS (without Mg<sup>2+</sup> and Ca<sup>2+</sup>), pH 7.4, 150 mM NaCl, 0.05% Sodium Azide and 40% glycerol

**研究领域:** Signal Transduction, Cancer, Cardiovascular, Metabolism, Neuroscience

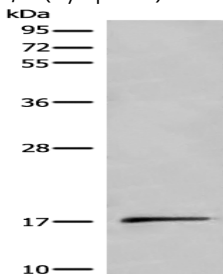
**储存和运输:** Store at -20°C. Avoid repeated freezing and thawing



Immunohistochemistry analysis of paraffin embedded Human liver cancer tissue using 221798 (UCN3 Antibody) at a dilution of 1/20 (Cytoplasm).



In comparison with the IHC on the left, the same paraffin-embedded Human liver cancer tissue is first treated with the synthetic peptide and then with 221798 (Anti-UCN3 Antibody) at dilution 1/20.



Gel: 12% SDS-PAGE, Lysate: 40 µg;

Lane: HT-29 cell lysate;

Primary antibody: 221798 (UCN3 Antibody) at dilution 1/250;

Secondary antibody: Goat anti rabbit IgG at 1/8000 dilution;

Exposure time: 40 seconds