

UBTD1 RABBIT PAB

货号: S221074

产品全名: UBTD1 兔多抗

基因符号

UNIPROT ID: Q9HAC8 (Gene Accession - NP_079230)

背景: The degradation of many proteins is carried out by the ubiquitin pathway in which proteins are targeted for degradation by covalent conjugation of the polypeptide ubiquitin. This gene encodes a protein that belongs to the ubiquitin family of proteins. The encoded protein is thought to regulate E2 ubiquitin conjugating enzymes belonging to the UBE2D family. [provided by RefSeq, Mar 2014]

抗原: Synthetic peptide of human UBTD1

经过测试的应用: ELISA, WB, IHC

推荐稀释比: IHC: 50-200;WB: 1000-5000;ELISA: 5000-10000

种属反应性: Rabbit

克隆性: Rabbit Polyclonal

亚型: Immunogen-specific rabbit IgG

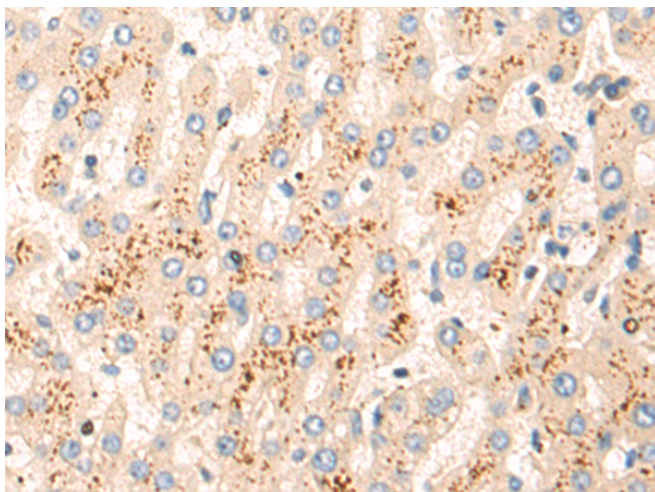
纯化: Antigen affinity purification

种属反应性: Human, Mouse, Rat

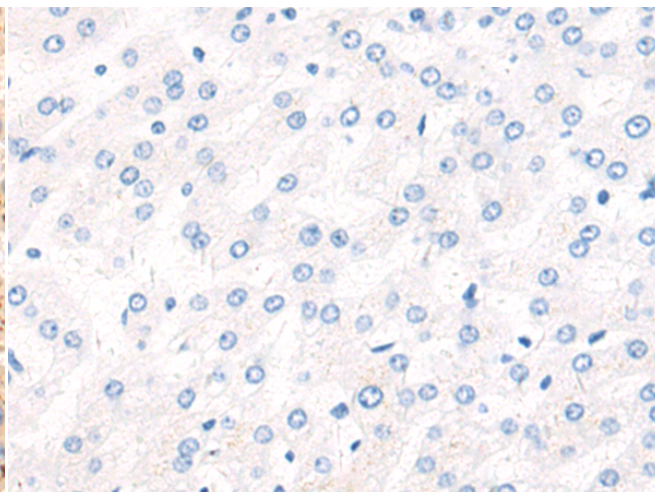
成分: PBS (without Mg²⁺ and Ca²⁺), pH 7.4, 150 mM NaCl, 0.05% Sodium Azide and 40% glycerol

研究领域: Cancer

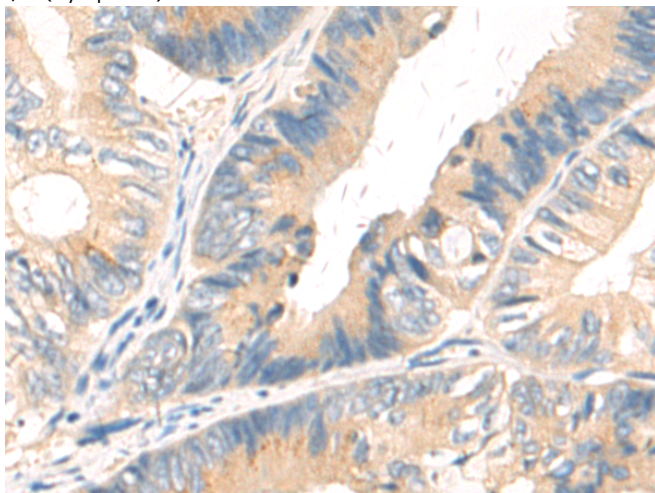
储存和运输: Store at -20°C. Avoid repeated freezing and thawing



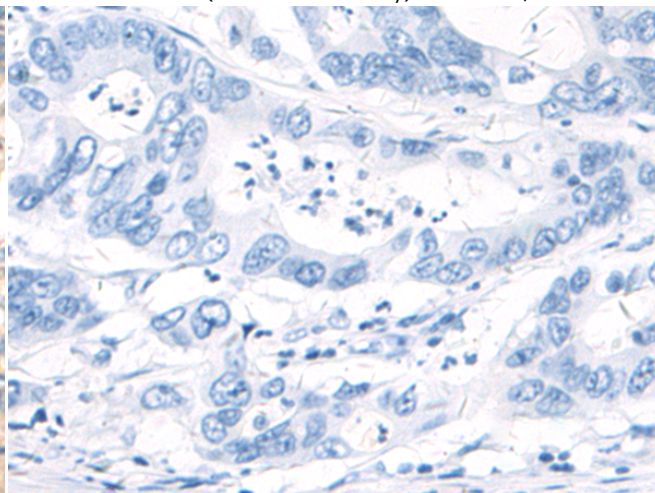
Immunohistochemistry analysis of paraffin embedded Human liver cancer tissue using 221074(UBTD1 Antibody) at a dilution of 1/50(Cytoplasm).



In comparison with the IHC on the left, the same paraffin-embedded Human liver cancer tissue is first treated with the synthetic peptide and then with 221074(Anti-UBTD1 Antibody) at dilution 1/50.

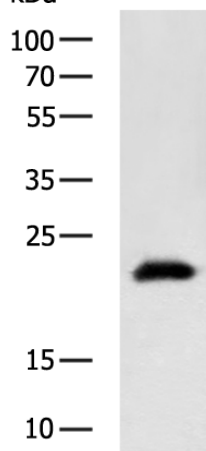


The image on the left is immunohistochemistry of paraffin-embedded Human colorectal cancer tissue using 221074(Anti-UBTD1 Antibody) at a dilution of 1/50.



In comparison with the IHC on the left, the same paraffin-embedded Human colorectal cancer tissue is first treated with synthetic peptide and then with D262443(Anti-UBTD1 Antibody) at dilution 1/50.

kDa



Gel: 12%SDS-PAGE, Lysate: 40 µg;
 Lane: 293T cell lysate;
 Primary antibody: 221074(UBTD1 Antibody) at dilution 1/1150;
 Secondary antibody: HRP-conjugated Goat anti rabbit IgG at 1/5000 dilution;
 Exposure time: 10 seconds



Product Description

Pioneering GTPase and Oncogene Product Development since 2010
