

## UBP1 RABBIT PAB

货号: S220672

产品全名: UBPI 兔多抗

基因符号 LBPIA; LBPIB; LBP-1B; LBP-1a

**UNIPROT ID:** Q9NZI7 (Gene Accession - NP\_001121632)

**背景:** LBPI (Upstream-binding protein 1), also designated UBPI, LBPIA or LBPIB, is a 540 amino acid protein that belongs to the grh/CP2 family (grainyhead transcription factor family). LBPI is a transcriptional activator that regulates the placental expression of CYP11A1 and activates the Hemoglobin globin promoter in erythroid cells. LBPI is responsible for repressing transcription of HIV-1 by binding to and preventing TFIIID from interacting with its promoter region. Null expression of LBPI causes uterine growth retardation in mice embryos suggesting a critical role in extraembryonic angiogenesis.

**抗原:** Synthetic peptide of human UBPI

**经过测试的应用:** ELISA, WB, IHC

**推荐稀释比:** IHC: 50-200; WB: 500-2000; ELISA: 2000-5000

**种属反应性:** Rabbit

**克隆性:** Rabbit Polyclonal

**亚型:** Immunogen-specific rabbit IgG

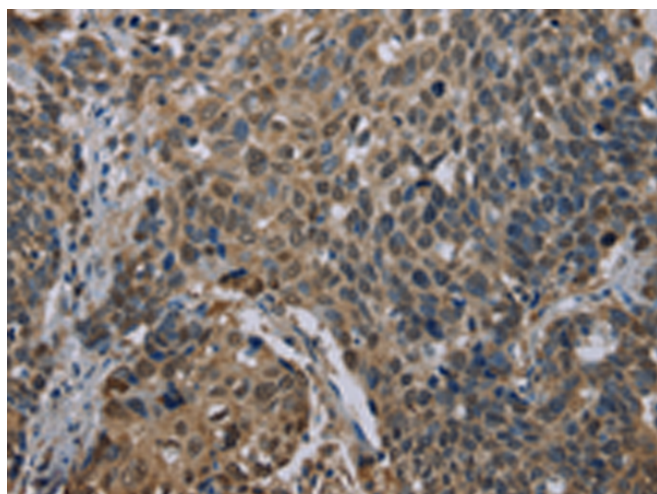
**纯化:** Antigen affinity purification

**种属反应性:** Human, Mouse

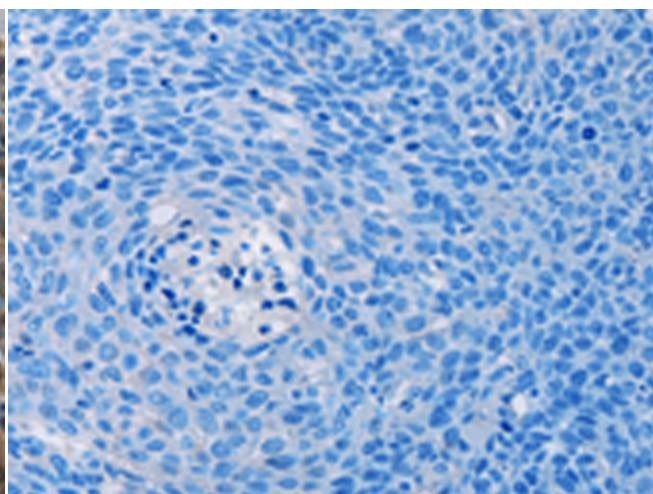
**成分:** PBS (without Mg<sup>2+</sup> and Ca<sup>2+</sup>), pH 7.4, 150 mM NaCl, 0.05% Sodium Azide and 40% glycerol

**研究领域:** Epigenetics and Nuclear Signaling

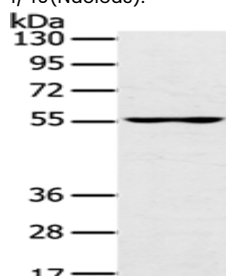
**储存和运输:** Store at -20°C. Avoid repeated freezing and thawing



Immunohistochemistry analysis of paraffin embedded Human cervical cancer tissue using 220672(UBPI Antibody) at a dilution of 1/40(Nucleus).



In comparison with the IHC on the left, the same paraffin-embedded Human cervical cancer tissue is first treated with the synthetic peptide and then with 220672(Anti-UBPI Antibody) at dilution 1/40.



Gel: 8%SDS-PAGE, Lysate: 40 µg;

Lane: PC3 cells;

Primary antibody: 220672(UBPI Antibody) at dilution 1/200;

Secondary antibody: Goat anti rabbit IgG at 1/8000 dilution;

Exposure time: 10 seconds