

## UBIQUITIN PROTEIN LIGASE E3A RABBIT MAB

货号: N263598

产品全名: Ubiquitin Protein Ligase E3A 兔单克隆抗体

基因符号 Ubiquitin-protein ligase E3A; UBE3A; E6AP; EPVE6AP; HPVE6A

**UNIPROT ID:** Q05086

背景: E3 ubiquitin-protein ligase which accepts ubiquitin from an E2 ubiquitin-conjugating enzyme in the form of a thioester and transfers it to its substrates. Several substrates have been identified including the RAD23A and RAD23B, MCM7 (which is involved in DNA replication), annexin A1, the PML tumor suppressor, and the cell cycle regulator CDKN1B.

抗原: Recombinant protein of human UBE3A

经过测试的应用: WB, ICC/IF, IP

推荐稀释比: WB: 1/500-1/1000 IF: 1/50-1/200 IP: 1/20

种属反应性: Rabbit

克隆性: Rabbit Monoclonal

克隆编号: R02-1A0

分子量: Calculated MW: 101 kDa; Observed MW: 101 kDa

亚型: IgG

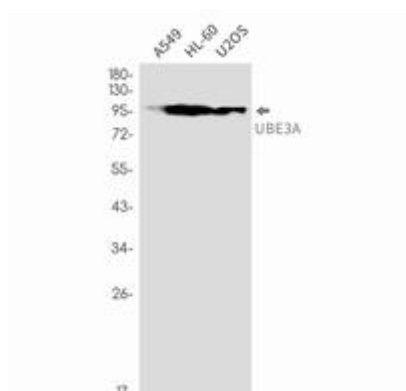
纯化: Affinity Purified

种属反应性: Human, Mouse and Rat

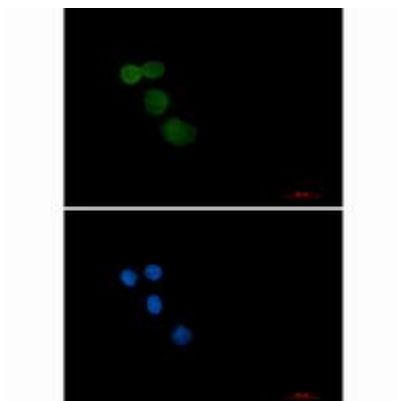
成分: PBS (without Mg<sup>2+</sup> and Ca<sup>2+</sup>), pH 7.3 containing 50% glycerol, 0.5% BSA and 0.02% sodium azide

研究领域: Epigenetics and Nuclear Signaling

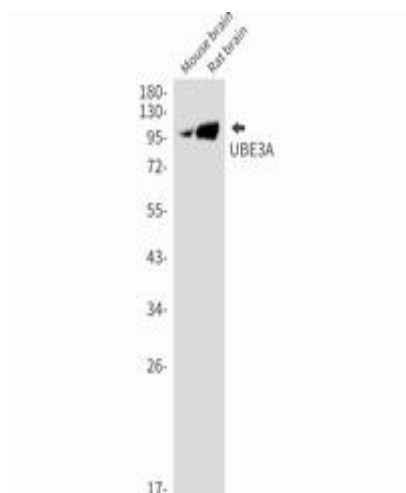
储存和运输: Store at -20°C. Avoid repeated freezing and thawing



Western blot analysis of UBE3A in A549, HL-60, U2OS lysates using UBE3A antibody



Immunocytochemistry analysis of Ubiquitin Protein Ligase E3A (green) in HeLa using Ubiquitin Protein Ligase E3A antibody, and DAPI (blue).



Western blot analysis of UBE3A in mouse brain, rat brain lysates using UBE3A antibody.