

## UBIQUITIN K63 RABBIT MAB

货号: N263600

产品全名: Ubiquitin K63 兔单克隆抗体

基因符号 FLJ25987; MGC8385; ubiquitin B; Ubiquitin; UBCEP1; UBCEP2; RPS27A

**UNIPROT ID:** P0CG47

**背景:** Plays an important role in the ubiquitin-proteasome pathway. Ubiquitin can be covalently linked to many cellular proteins by the ubiquitination process, which targets proteins for degradation by the 26S proteasome. Three components are involved in the target protein-ubiquitin conjugation process. Ubiquitin is first activated by forming a thiolester complex with the activation component E1; the activated ubiquitin is subsequently transferred to the ubiquitin-carrier protein E2, then from E2 to ubiquitin ligase E3 for final delivery to the epsilon-NH<sub>2</sub> of the target protein lysine residue.

**抗原:** A synthetic peptide of human Ubiquitin (linkage-specific K63)

**经过测试的应用:** WB,IHC-F,IHC-P,ICC/IF

**推荐稀释比:** WB: 1/500-1/1000 IHC: 1/50-1/100 IF: 1/50-1/200

**种属反应性:** Rabbit

**克隆性:** Rabbit Monoclonal

**克隆编号:** R06-2H7

**分子量:** Calculated MW: 26 kDa; Observed MW: 8 kDa

**亚型:** IgG

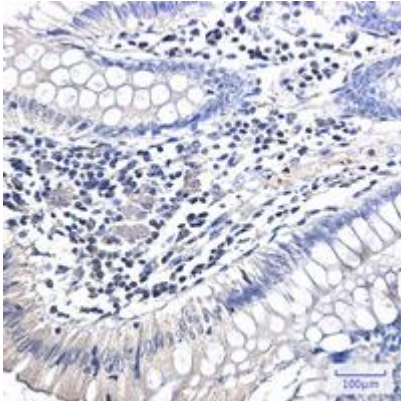
**纯化:** Affinity Purified

**种属反应性:** Human

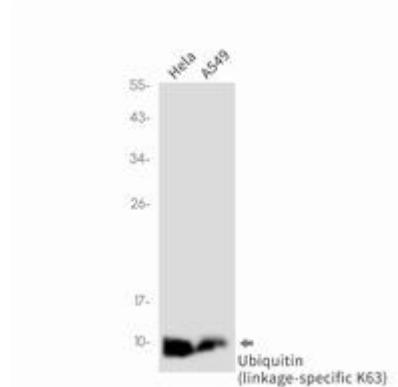
**成分:** PBS (without Mg<sup>2+</sup> and Ca<sup>2+</sup>), pH 7.3 containing 50% glycerol, 0.5% BSA and 0.02% sodium azide

**研究领域:** Neuroscience

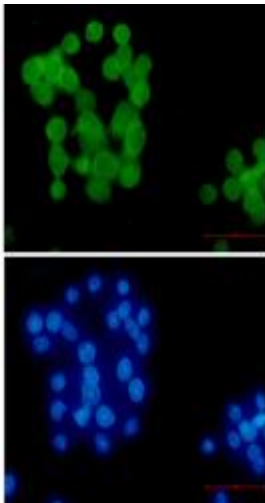
**储存和运输:** Store at -20°C. Avoid repeated freezing and thawing



Immunohistochemistry analysis of paraffin-embedded Human colon cancer using Ubiquitin (linkagespecific K63) antibody. High-pressure and temperature Sodium Citrate pH 6.0 was used for antigen retrieval.



Western blot analysis of Ubiquitin (linkagespecific K63) in HeLa, A549 lysates using Ubiquitin K63 antibody.



Immunocytochemistry analysis of Ubiquitin (linkagespecific K63) (green) in HeLa using Ubiquitin (linkagespecific K63) antibody, and DAPI (blue)