

## UBIQUITIN K48 RABBIT PAB

货号: N225744

产品全名: Ubiquitin K48 兔多抗

基因符号 FLJ25987; MGC8385; ubiquitin B; Ubiquitin; UBCEP1; UBCEP2; RPS27A

**UNIPROT ID:** P0CG47

**背景:** Plays an important role in the ubiquitin-proteasome pathway. Ubiquitin can be covalently linked to many cellular proteins by the ubiquitination process, which targets proteins for degradation by the 26S proteasome. Three components are involved in the target protein-ubiquitin conjugation process. Ubiquitin is first activated by forming a thiolester complex with the activation component E1; the activated ubiquitin is subsequently transferred to the ubiquitin-carrier protein E2, then from E2 to ubiquitin ligase E3 for final delivery to the epsilon-NH<sub>2</sub> of the target protein lysine residue.

**抗原:** A synthesized peptide derived from human K48-linkage Specific Ubiquitin

**经过测试的应用:** WB,IHC-P,ICC/IF,FC

**推荐稀释比:** WB: 1/500-1/1000 IHC: 1/50-1/100 IF: 1/50-1/200 FC: 1/50-1/100

**种属反应性:** Rabbit

**克隆性:** Rabbit Polyclonal

**分子量:** Refer to figures

**亚型:** IgG

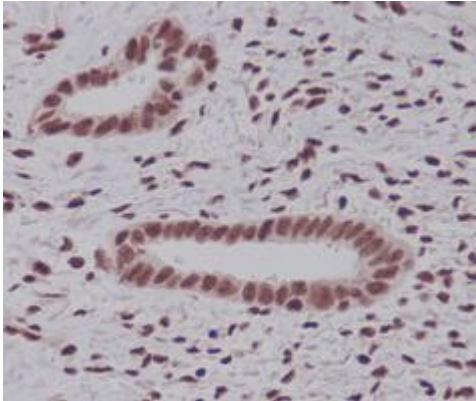
**纯化:** Affinity Chromatography

**种属反应性:** Human, Mouse and Rat

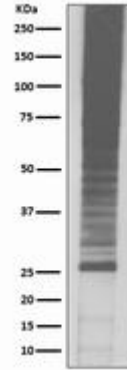
**成分:** PBS (without Mg<sup>2+</sup> and Ca<sup>2+</sup>), pH 7.3 containing 50% glycerol, 0.5% BSA and 0.02% sodium azide

**研究领域:** Neuroscience

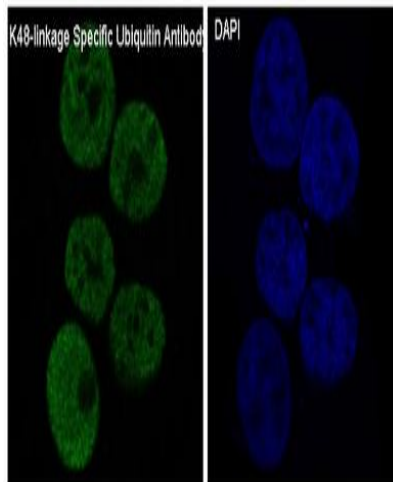
**储存和运输:** Store at -20°C. Avoid repeated freezing and thawing



Immunohistochemistry analysis of paraffin-embedded Human endometrium carcinoma using K48linkage Specific Ubiquitin antibody. High-pressure and temperature Sodium Citrate pH 6.0 was used for antigen retrieval.



Western blot analysis of Ubiquitin in Jurkat lysates using Ubiquitin K48 antibody.



Immunofluorescence analysis of Ubiquitin K48 in MCF-7 using K48linkage Specific Ubiquitin antibody.