

UBIQUITIN CONJUGATING ENZYME E2 N RABBIT MAB

货号: N263597

产品全名: Ubiquitin Conjugating Enzyme E2 N 兔单克隆抗体

基因符号 BLU; HEL-S-71; Ubc13; UbCH ben; Ubch13; UBCHBEN; Ube2n

UNIPROT ID: P61088

背景: The UBE2V1-UBE2N and UBE2V2-UBE2N heterodimers catalyze the synthesis of non-canonical 'Lys-63'-linked polyubiquitin chains. This type of polyubiquitination does not lead to protein degradation by the proteasome. Mediates transcriptional activation of target genes. Plays a role in the control of progress through the cell cycle and differentiation.

抗原: A synthetic peptide of human Ube2N/Ubc13

经过测试的应用: WB, ICC/IF

推荐稀释比: WB: 1/500-1/1000 IF: 1/50-1/200

种属反应性: Rabbit

克隆性: Rabbit Monoclonal

克隆编号: R05-5B0

分子量: Calculated MW: 17 kDa; Observed MW: 17 kDa

亚型: IgG

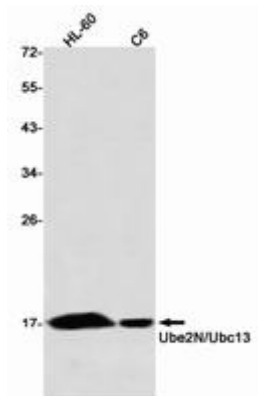
纯化: Affinity Purified

种属反应性: Human, Rat

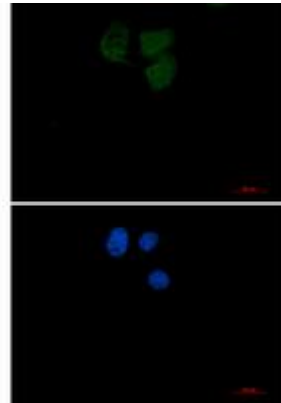
成分: PBS (without Mg²⁺ and Ca²⁺), pH 7.3 containing 50% glycerol, 0.5% BSA and 0.02% sodium azide

研究领域: Epigenetics and Nuclear Signaling

储存和运输: Store at -20°C. Avoid repeated freezing and thawing



Western blot analysis of Ube2N/Ubc13 in HL-60, C6 lysates using Ube2N/Ubc13 antibody.



Immunocytochemistry analysis of Ubiquitin Conjugating Enzyme E2 N (green) in HeLa using Ubiquitin Conjugating Enzyme E2 N antibody, and DAPI (blue).