

UBIQUITIN CONJUGATING ENZYME E2 L3 RABBIT MAB

Cat.#: N263596

Product Name: Anti-Ubiquitin Conjugating Enzyme E2 L3 Rabbit Monoclonal Antibody

Synonyms: E2-F1; L-UBC; UBCH7; UbcM4

UNIPROT ID: P68036

Background: Ubiquitin-conjugating enzyme E2 that specifically acts with HECT-type and RBR family E3 ubiquitin-protein ligases.

Immunogen: A synthetic peptide of human Ube2L3/UBCH7

Applications: WB,ICC/IF,IP

Recommended Dilutions: WB: 1/500-1/1000 IF: 1/50-1/200 IP: 1/20

Host Species: Rabbit

Clonality: Rabbit Monoclonal

Clone ID: R02-4B2

MW: Calculated MW: 18 kDa; Observed MW: 18 kDa

Isotype: IgG

Purification: Affinity Purified

Species Reactivity: Human,Mouse,Rat

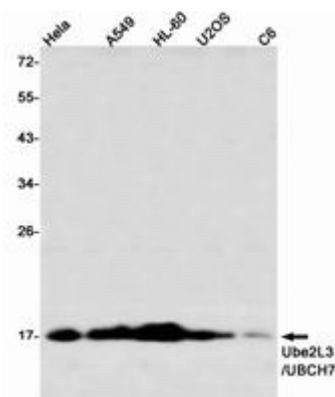
Conjugation: Unconjugated

Modification: Unmodified

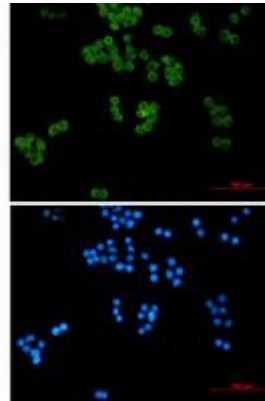
Constituents: PBS (without Mg²⁺ and Ca²⁺), pH 7.3 containing 50% glycerol, 0.5% BSA and 0.02% sodium azide

Research Areas: -

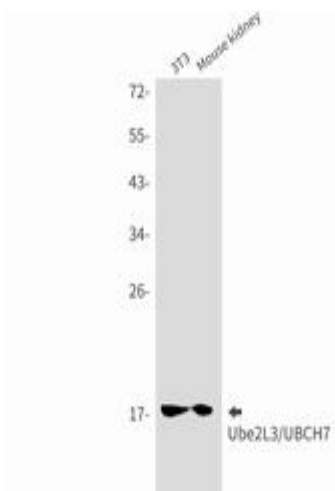
Storage & Shipping: Store at -20°C. Avoid repeated freezing and thawing



Western blot analysis of Ube2L3/UBCH7 in HeLa, A549, HL-60, U2OS, C6 lysates using Ube2L3/UBCH7 antibody



Immunocytochemistry analysis of Ubiquitin Conjugating Enzyme E2 L3 (green) in HeLa using Ubiquitin Conjugating Enzyme E2 L3 antibody, and DAPI (blue).



Western blot analysis of Ube2L3/UBCH7 in 3T3, mouse kidney lysates using Ube2L3/UBCH7 antibody.