

## UBIQUITIN CONJUGATING ENZYME E2 C RABBIT MAB

货号: N263594

产品全名: Ubiquitin Conjugating Enzyme E2 C 兔单克隆抗体

基因符号 UBCH10; Ubch10; Ube2c

**UNIPROT ID:** O00762

背景: Accepts ubiquitin from the E1 complex and catalyzes its covalent attachment to other proteins. In vitro catalyzes 'Lys-11'- and 'Lys-48'-linked polyubiquitination. Acts as an essential factor of the anaphase promoting complex/cyclosome (APC/C), a cell cycle-regulated ubiquitin ligase that controls progression through mitosis.

抗原: Recombinant protein of human UBE2C

经过测试的应用: WB,IHC-F,IHC-P,ICC/IF,IP

推荐稀释比: WB: 1/500-1/1000 IHC: 1/50-1/100 IF: 1/50-1/200 IP: 1/20

种属反应性: Rabbit

克隆性: Rabbit Monoclonal

克隆编号: R08-4F5

分子量: Calculated MW: 20 kDa; Observed MW: 20 kDa

亚型: IgG

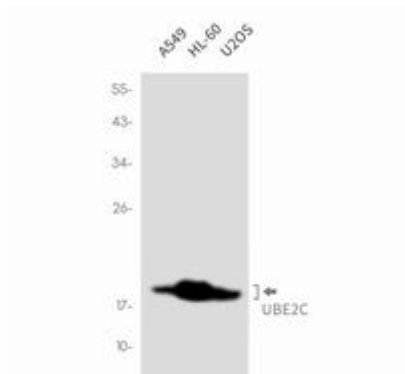
纯化: Affinity Purified

种属反应性: Human, Mouse and Rat

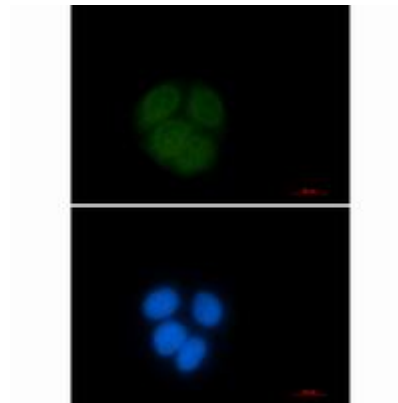
成分: PBS (without Mg<sup>2+</sup> and Ca<sup>2+</sup>), pH 7.3 containing 50% glycerol, 0.5% BSA and 0.02% sodium azide

研究领域: Epigenetics and Nuclear Signaling

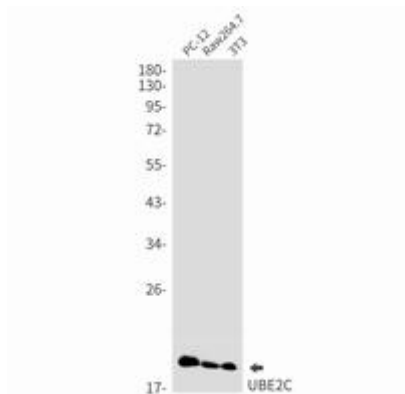
储存和运输: Store at -20°C. Avoid repeated freezing and thawing



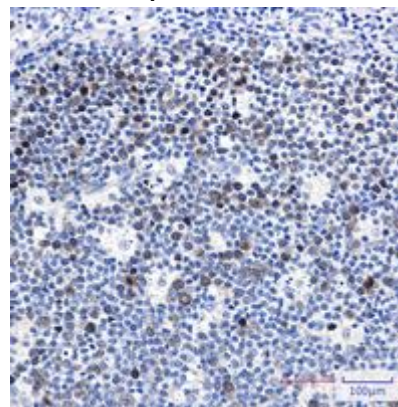
Western blot analysis of UBE2C in A549, HL-60, U2OS lysates using UBE2C antibody



Immunocytochemistry analysis of Ubiquitin Conjugating Enzyme E2 C (green) in HeLa using Ubiquitin Conjugating Enzyme E2 C antibody, and DAPI (blue).



Western blot analysis of UBE2C in PC-12, Raw264.7, 3T3 lysates using UBE2C antibody.



Immunohistochemistry analysis of paraffin-embedded Human tonsil using UBE2C antibody. High-pressure and temperature Sodium Citrate pH 6.0 was used for antigen retrieval.