

UBIQUITIN 60S RIBOSOMAL PROTEIN L40 RABBIT MAB

货号: N263593

产品全名: Ubiquitin 60S Ribosomal Protein L40 兔单克隆抗体

基因符号 L40; CEP52; RPL40; HUBCEP52

UNIPROT ID: P62987

背景: Ubiquitin: Exists either covalently attached to another protein, or free (unanchored).

抗原: A synthetic peptide of human UBA52

经过测试的应用: WB, ICC/IF, IP

推荐稀释比: WB: 1/500-1/1000 IF: 1/50-1/200 IP: 1/20

种属反应性: Rabbit

克隆性: Rabbit Monoclonal

克隆编号: R05-5D6

分子量: Calculated MW: 15 kDa; Observed MW: 10 kDa

亚型: IgG

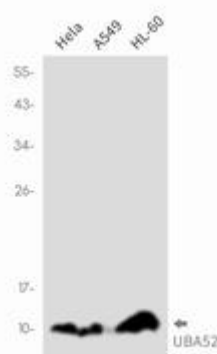
纯化: Affinity Purified

种属反应性: Human

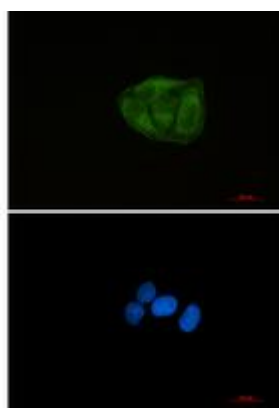
成分: PBS (without Mg²⁺ and Ca²⁺), pH 7.3 containing 50% glycerol, 0.5% BSA and 0.02% sodium azide

研究领域: Epigenetics and Nuclear Signaling

储存和运输: Store at -20°C. Avoid repeated freezing and thawing



Western blot analysis of UBA52 in HeLa, A549, HL-60 lysates using UBA52 antibody.



Immunocytochemistry analysis of Ubiquitin 60S Ribosomal Protein L40 (green) in HeLa using Ubiquitin 60S Ribosomal Protein L40 antibody, and DAPI (blue).



Product Description

Pioneering GTPase and Oncogene Product Development since 2010
