

UBE2S RABBIT PAB

货号: S217377

产品全名: UBE2S 兔多抗

基因符号: EPF5; E2EPF; E2-EPF

UNIPROT ID: Q16763 (Gene Accession - NP_055316)

背景: This gene encodes a member of the ubiquitin-conjugating enzyme family. The encoded protein is able to form a thiol ester linkage with ubiquitin in a ubiquitin activating enzyme-dependent manner, a characteristic property of ubiquitin carrier proteins.

抗原: Fusion protein of human UBE2S

经过测试的应用: ELISA, IHC

推荐稀释比: IHC: 50-200; ELISA: 2000-5000

种属反应性: Rabbit

克隆性: Rabbit Polyclonal

亚型: Immunogen-specific rabbit IgG

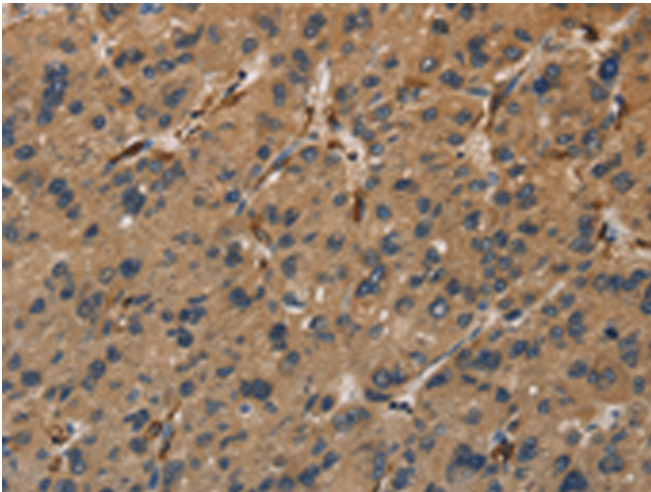
纯化: Antigen affinity purification

种属反应性: Human, Mouse, Rat

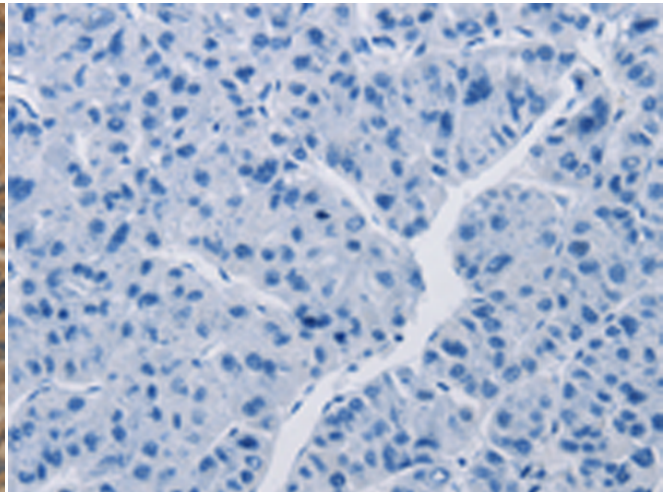
成分: PBS (without Mg²⁺ and Ca²⁺), pH 7.4, 150 mM NaCl, 0.05% Sodium Azide and 40% glycerol

研究领域: Epigenetics and Nuclear Signaling

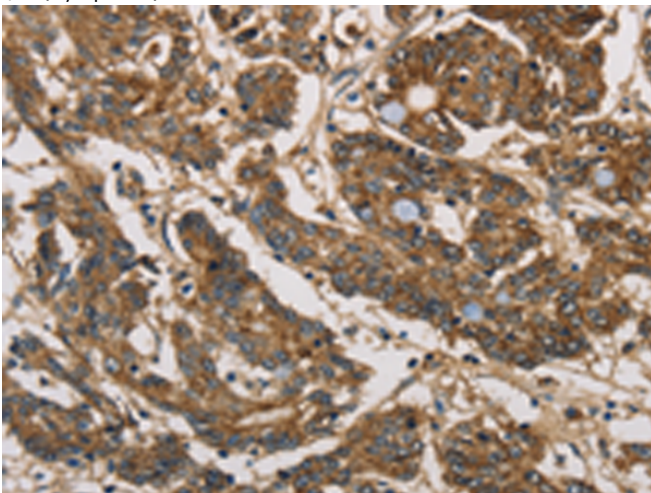
储存和运输: Store at -20°C. Avoid repeated freezing and thawing



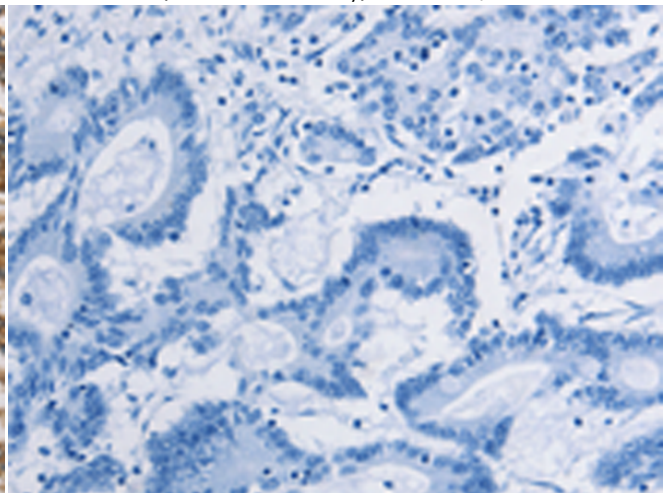
Immunohistochemistry analysis of paraffin embedded Human liver cancer tissue using 217377(UBE2S Antibody) at a dilution of 1/40(Cytoplasm).



In comparison with the IHC on the left, the same paraffin-embedded Human liver cancer tissue is first treated with the fusion protein and then with 217377(Anti-UBE2S Antibody) at dilution 1/40.



The image on the left is immunohistochemistry of paraffin-embedded Human colon cancer tissue using 217377(Anti-UBE2S Antibody) at a dilution of 1/40.



In comparison with the IHC on the left, the same paraffin-embedded Human colon cancer tissue is first treated with fusion protein and then with D222263(Anti-UBE2S Antibody) at dilution 1/40.



Product Description

Pioneering GTPase and Oncogene Product Development since 2010
