

UBE2R2 RABBIT PAB

货号: S218306

产品全名: UBE2R2 兔多抗

基因符号: UBC3B; CDC34B; E2-CDC34B

UNIPROT ID: Q712K3 (Gene Accession - BC004862)

背景: Protein kinase CK2 is a ubiquitous and pleiotropic Ser/Thr protein kinase involved in cell growth and transformation. This gene encodes a protein similar to the E2 ubiquitin conjugating enzyme UBC3/CDC34. Studies suggest that CK2-dependent phosphorylation of this ubiquitin-conjugating enzyme functions by regulating beta-TrCP substrate recognition and induces its interaction with beta-TrCP, enhancing beta-catenin degradation.

抗原: Fusion protein of human UBE2R2

经过测试的应用: ELISA, IHC

推荐稀释比: IHC: 150-300; ELISA: 5000-10000

种属反应性: Rabbit

克隆性: Rabbit Polyclonal

亚型: Immunogen-specific rabbit IgG

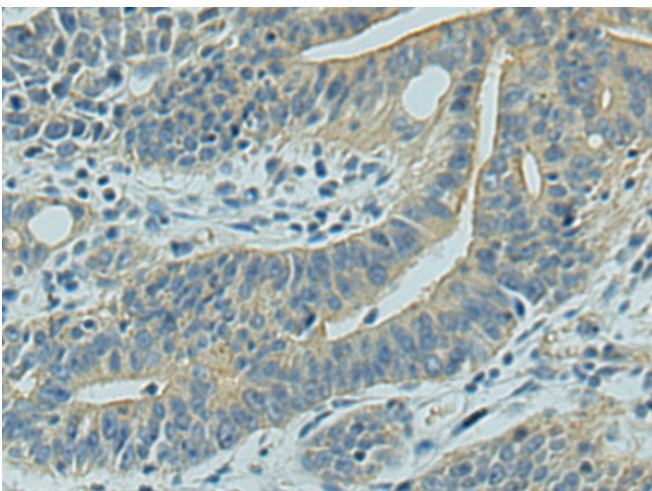
纯化: Antigen affinity purification

种属反应性: Human, Mouse

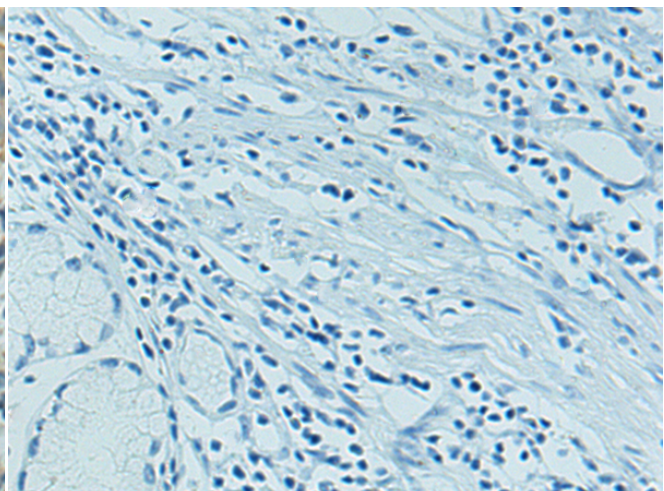
成分: PBS (without Mg²⁺ and Ca²⁺), pH 7.4, 150 mM NaCl, 0.05% Sodium Azide and 40% glycerol

研究领域: Epigenetics and Nuclear Signaling, Cell Biology

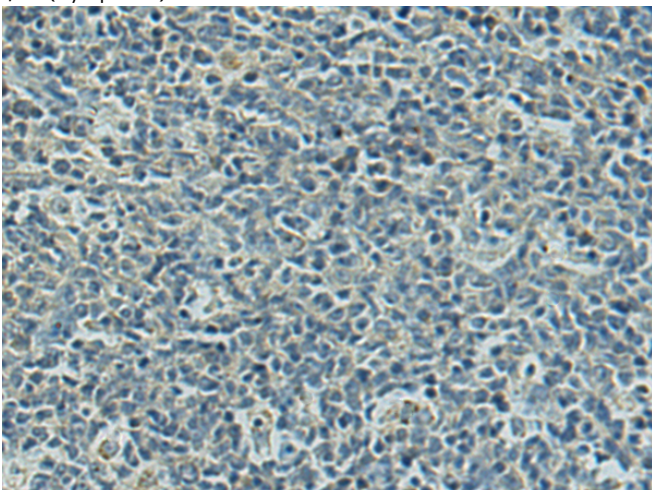
储存和运输: Store at -20°C. Avoid repeated freezing and thawing



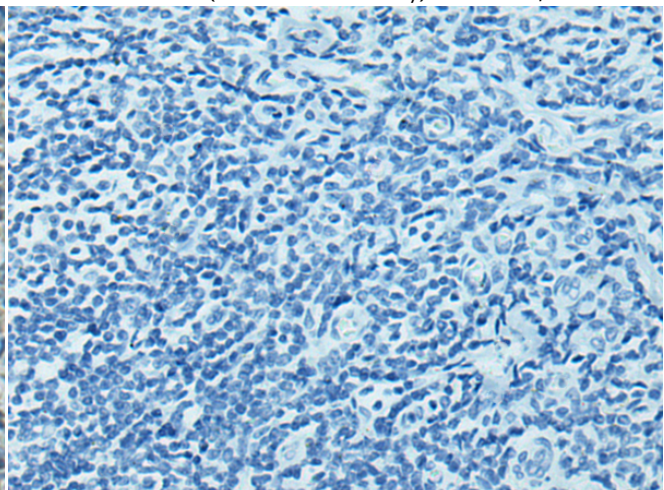
Immunohistochemistry analysis of paraffin embedded Human gastric cancer tissue using 218306(UBE2R2 Antibody) at a dilution of 1/180(Cytoplasm).



In comparison with the IHC on the left, the same paraffin-embedded Human gastric cancer tissue is first treated with the fusion protein and then with 218306(Anti-UBE2R2 Antibody) at dilution 1/180.



The image on the left is immunohistochemistry of paraffin-embedded Human tonsil tissue using 218306(Anti-UBE2R2 Antibody) at a dilution of 1/180.



In comparison with the IHC on the left, the same paraffin-embedded Human tonsil tissue is first treated with fusion protein and then with D224131(Anti-UBE2R2 Antibody) at dilution 1/180.



Product Description

Pioneering GTPase and Oncogene Product Development since 2010
